



PW1505



PW2010

CERTOL INFECTIOUS WASTE COLLECTION BAG

Bright red waste bags constructed of heavy-duty polyethylene with the universally recognized biohazard symbol. Meets strict New York and Florida red bag standards.

- PW1505 12 Gallon 17" x 7" x 30" Infectious Waste Collection Bag, 100/cs
 PW2010 25 Gallon 21" x 9" x 43" Infectious Waste Collection Bag, 50/bx



47-CBL4



47-CBS1

MEDICAL ACTION CHEMOTHERAPY WASTE HANDLING BAGS

Yellow. 4 Mil.

- 47-CBL4 31" x 41", Waste Handling Bag Ultra-Tuff™ CYTA, 100/cs
 47-CBS1 12" x 15", Transport Bag CYTA, Black on Yellow, Zip Closure, 100/cs



39-97



49-91

MEDICAL ACTION LAB SAFE™ LABORATORY SPECIMEN COLLECTION BAGS

Constructed of heavy duty durable polyethylene for optimum strength and safety. Clear. Includes outside paperwork pouch.

- 39-97 6" x 9" Collection Bag, Reclosable Adhesive Closure, Biohazard Black/Red Print, 1000/cs
 39-99 8" x 11 1/2" Collection Bag, Reclosable Adhesive Closure, Biohazard Black/Red Print, 1000/cs
 47-STB1 8" x 12" Collection Bag, Reclosable Adhesive Closure, White Block w/white print, 200/cs
 49-90 6" x 6" Collection Bag, Zip Closure, No Print, 1000/cs
 49-91 6" x 6" Collection Bag, Zip Closure, Biohazard Black/Red Print, 1000/cs
 49-93 8" x 8" Collection Bag, Zip Closure, No Print, 1000/cs
 49-95 8" x 8" Collection Bag, Zip Closure, Biohazard Black/Red Print, 1000/cs
 49-96 6" x 9" Collection Bag, Zip Closure, No Print, 1000/cs
 49-97 6" x 9" Collection Bag, Zip Closure, Biohazard Black/Red Print, 1000/cs
 49-98 6" x 9" Collection Bag, Zip Closure, "Printed: Freeze, Refrigerate, Room Temp.", Red/Black Biohazard Print, 1000/cs
 49-99 9" x 12" Collection Bag, Zip Closure, Biohazard Black/Red Print, 1000/cs
 58-97 6" x 9" Collection Bag, Zip Closure, Economy, Biohazard Black/Red Print, 1000/cs
 59-94 12" x 13" x 4" Collection Bag, Zip Closure w/gusseted bottom, Biohazard Black/Red Print, 1000/cs

MEDICAL ACTION TAMPER SAFE™ LABORATORY SPECIMEN TRANSPORT BAG

Constructed of heavy duty durable polyethylene for optimum strength and safety. Includes outside paperwork pouch.

- 59-89 6" x 9" Collection Bag, Biohazard Red/Black Print, 1000/cs



MEDICAL ACTION SAF-T-SURE® AUTOCLAVABLE DECONTAMINATION BAGS

- 8-100 Clear, 12" x 24" Bag w/external indicator, Maximum Autoclave Temp. 280°F, 100/cs
 8-150 Clear, 24" x 30" Bag w/external indicator, Maximum Autoclave Temp. 280°F, 100/cs
 8-200 Clear, 26" x 30" Bag w/external indicator, Maximum Autoclave Temp. 280°F, 100/cs
 8-250 Clear, 24" x 36" Bag w/external indicator, Maximum Autoclave Temp. 280°F, 100/cs
 8-300 Clear, 36" x 35" Bag w/external indicator, Maximum Autoclave Temp. 280°F, 100/cs
 8-640 Clear, 36" x 45" Bag w/external indicator, Maximum Autoclave Temp. 280°F, 100/cs
 8-650 Clear, 38" x 47" Bag w/external indicator, Maximum Autoclave Temp. 280°F, 100/cs
 8-700 Orange, 14" x 19" Bag w/external indicator, Maximum Autoclave Temp. 280°F, 200/cs
 8-702 Orange, 19" x 23" Bag w/external indicator, Maximum Autoclave Temp. 280°F, 200/cs
 8-703 Orange, 25" x 35" Bag w/external indicator, Maximum Autoclave Temp. 280°F, 200/cs
 8-705 Orange, 38" x 47" Bag w/external indicator, Maximum Autoclave Temp. 280°F, 100/cs
 8-900 Red, 8 1/2" x 11" Bag, Maximum Autoclave Temp. 260°F, 1000/cs
 8-904 Red, 14" x 19" Bag, Maximum Autoclave Temp. 260°F, 200/cs
 8-908 Red, 19" x 24" Bag, Maximum Autoclave Temp. 260°F, 200/cs
 8-912 Red, 25" x 35" Bag, Maximum Autoclave Temp. 260°F, 200/cs



MEDICAL ACTION SAF-T-SEAL® WASTE INFECTIOUS BAGS

Made of resilient, high density polymer film. They offer excellent value and outstanding puncture resistance. Red.

- 44-00 24" x 24" Infectious Bag, 8 Microns, 1000/cs
 44-01 33" x 40" Infectious Bag, 16 Microns, 250/cs
 44-03 17" x 18" Infectious Bag, 8 Microns, 1000/cs
 44-04 24" x 32" Infectious Bag, 11 Microns, 500/cs
 44-05 31" x 41" Infectious Bag, 16 Microns, 250/cs
 44-13 40" x 46" Infectious Bag, 16 Microns, 200/cs
 57-00 24" x 24" Infectious Bag, 1.0 Mil, 500/cs
 57-05 30.5" x 41" Infectious Bag, 1.0 Mil, 250/cs

MEDICAL ACTION SPECIMEN TRANSPORT BAGS

102	6" x 9" Transport Bag, Zip Closure, Clear, Biohazard, 1000/cs
103	9" x 12" Transport Bag, Zip Closure, Clear, Biohazard, 1000/cs
105	9" x 12" Transport Bag, 2 mil, Zip Closure, Red, "Biohazardous Waste", 100/pk, 10 pk/cs
107	12" x 15" Transport Bag, 2 mil, Zip Closure, Red, "Biohazardous Waste", 500/cs
4915.ORG	Bag, Specimen Transport, 8" x 10", Orange/Black, 2 Mil, 1000/cs
4921	Bag, Lab Specimen Transport, LLDPE Film, Flat Pack, Zip Closure w/pouch, Flap, 12" x 15", Print/Label Biohazard (English/Spanish), Biohazard Symbol, Red/Black, 2 Mil, 100/bx, 5 bx/cs
4923	Bag, Lab Specimen Transport, LLDPE Film, Flat Pack, Zip Closure w/pouch, Flap, 9" x 12.5", Print/Label Biohazard (English/Spanish), Biohazard Symbol, Red/Black, 2 Mil, 100/bx, 10 bx/cs
842	19" x 24" Transport Bag, 2 mil, Red, Biohazard, 200/cs
846	25" x 35" Transport Bag, 2 mil, Red, Biohazard, 200/cs
9218	12" x 15" Transport Bag, Zip Close, Yellow, Chemo (4 mil), 250/cs

**MEDICAL ACTION SURE-SEAL™ INFECTIOUS WASTE BAGS**

Made from linear low density materials for high performance and value. Red.

37-97	24" x 24" Infectious Waste Bag, 1.2 Mil, 150/rl/cs
47-50	24" x 24" Infectious Waste Bag, 1.2 Mil, 500/cs
47-55	31" x 41" Infectious Waste Bag, 1.1 Mil, 250/cs
47-71	31" x 41" Infectious Waste Bag, 1.6 Mil, 100/cs
47-73	40" x 46" Infectious Waste Bag, 1.6 Mil, 100/cs

**MEDICAL ACTION ULTRA-TUFF™ INFECTIOUS WASTE BAGS**

Constructed of high performance resin. Reinforced seams ensure secure load handling. The most cost-effective bag in areas where performance is critical. Red.

45-30	28" x 31" Infectious Waste Bag, 1.25 Mil, 250/cs
45-41	31" x 41" Infectious Waste Bag, 1.25 Mil, 250/cs
45-43	40" x 46" Infectious Waste Bag, 1.25 Mil, 150/cs
45-45	40" x 55" Infectious Waste Bag, 1.25 Mil, 150/cs
45-50	24" x 24" Infectious Waste Bag, 1.25 Mil, 250/cs
45-54	24" x 32" Infectious Waste Bag, 1.25 Mil, 250/cs
47-05	23" x 8" x 41" Infectious Waste Bag, 1.25 Mil, 250/cs
47-15	23" x 17" x 46" Infectious Waste Bag, 1.25 Mil, 150/cs
47-41	23" x 8" x 41" Infectious Waste Bag, 2.4 Mil, 100/cs
47-43	23" x 17" x 46" Infectious Waste Bag, 2.4 Mil, 100/cs
47-45	23" x 17" x 55" Infectious Waste Bag, 2.4 Mil, 100/cs
50-40	11" x 14" Infectious Waste Bag, 1.5 Mil, 500/cs
50-42	11" x 14" Infectious Waste Bag, 1.5 Mil, 50/pk, 10 pk/cs

Accessories

14-20	Dispenser Rack For 50-42
-------	--------------------------

**MEDICAL ACTION INFECTIOUS WASTE BAGS**

285BX	30 1/2" x 41", Blue, "Soiled Linen" Bags, 50/bx, 4 bx/cs
F109	38" x 45" Red Bag F-Code Series: Pass the ASTM D1922-67, 480 Gram Elmendorf Test, 1.2 mil, 200/cs
F110	37" x 50" Red Bag F-Code Series: Pass the ASTM D1922-67, 480 Gram Elmendorf Test, 1.5 mil, 150/cs
F116	23" x 23" Red Bag F-Code Series: Pass the ASTM D1922-67, 480 Gram Elmendorf Test, 1.2 mil, 500/cs
F116BX	23" x 23" Red Bag F-Code Series: Pass the ASTM D1922-67, 480 Gram Elmendorf Test, 1.2 mil, 100/bx, 4 bx/cs
F117	30 1/2" x 41" Red Bag F-Code Series: Pass the ASTM D1922-67, 480 Gram Elmendorf Test, 1.2 mil, 250/cs
F118	33" x 38" Red Bag F-Code Series: Pass the ASTM D1922-67, 480 Gram Elmendorf Test, 1.2 mil, 250/cs
F124	24" x 30" Red Bag F-Code Series: Pass the ASTM D1922-67, 480 Gram Elmendorf Test, 1.2 mil, 500/cs
F130	37" x 50" Red Bag F-Code Series: Pass the ASTM D1922-67, 480 Gram Elmendorf Test, 1.2 mil, 150/cs
F135	40" x 46" Red Bag F-Code Series: Pass the ASTM D1922-67, 480 Gram Elmendorf Test, 1.2 mil, 100/cs
F145	30" x 36" Red Bag F-Code Series: Pass the ASTM D1922-67, 480 Gram Elmendorf Test, 1.2 mil, 250/cs
F149	40" x 45" Red Bag F-Code Series: Pass the ASTM D1922-67, 480 Gram Elmendorf Test, 1.2 mil, 250/cs
R108M	25" x 34" Hamper Bags, 1.2 mil, Red, "Biohazardous Waste", 30/rl, 10 rl/cs
R109	38" x 45" Hamper Bags, 1.5 mil, Red, "Biohazardous Waste", 15/rl, 10 rl/cs
R110	38" x 45" Hamper Bags, 1.75 mil, Red, "Biohazardous Waste", 15/rl, 10 rl/cs
R112	30 1/2" x 41" Hamper Bags, Yellow, "Infectious Linen", 20/rl, 10 rl/cs
R116	23" x 23" Hamper Bags, 1.5 mil, Red, "Biohazardous Waste", 30/rl, 10 rl/cs
R117	30 1/2" x 41" Hamper Bags, 1.5 mil, Red, "Biohazardous Waste", 20/rl, 10 rl/cs
R117M	30 1/2" x 41" Hamper Bags, 1.2 mil, Red, "Biohazardous Waste", 25/rl, 10 rl/cs
R172M	38" x 45" Hamper Bags, 1.2 mil, Red, "Biohazardous Waste", 20/rl, 10 rl/cs
RC101	30 1/2" x 41" Soiled Linen Bags, Clear, "Recyclable Materials", 250/cs
RD610	11" x 14 1/4" Hamper Bags, 1.25 mil, Red, "Biohazardous Waste", 20/rl, 10 rl/cs
RD630	14 1/2" x 19" Hamper Bags, 1.25 mil, Red, "Biohazardous Waste", 20/rl, 10 rl/cs
RD650	16" x 24" Hamper Bags, 1.25 mil, Red, "Biohazardous Waste", 20/rl, 10 rl/cs
RD660	16" x 24" Hamper Bags, 1.25 mil, Buff, "Biohazardous Waste", 20/rl, 10 rl/cs

MEDICAL ACTION SAF-T-TAINER™

Double wall corrugated container with plastic red inner liner. Biomedical waste container.

10-2011	Biomedical Waste Container, Corrugated Box w/liner, Flat Pack, 11 Gal, 12" x 24" x 12", Print: Biohazardous/Infectious Waste w/biohazard symbol, Color: Red/Black/Red, 14/cs
---------	--

MEDICAL ACTION WATER SOLUBLE BAGS

1.15 mil. Clear. No print.

807	36" x 39" Water Soluble Bag, 100/cs
809	28" x 39" Water Soluble Bag, 100/cs

MEDICAL ACTION AUTOCLAVABLE BIOHAZARD BAGS

Polypropylene films with indicator. Flat pack. Twist ties. Autoclavable.

2120	45" x 58" Biohazard Bag, Clear, 100/cs
844	Biohazard Bag, 25" x 30", 1.8 mil, 12-14 Gal., Red/Black, Print/Label, Max. Temp 285°F, Biohazard Labeling, Biohazard Symbol, English/Spanish, 200/cs
848	Bag, 38" x 47", Print/Label, Max Temp 285°F, Biohazard Labeling, Biohazard Symbol, English/Spanish, Red/Black, 1.8 Mil, 44 Gal, 100/cs
852	Biohazard Bag, 12" x 24", 1.8 mil, 2-3 Gal., Clear/Black, Print/Label, Max. Temp 285°F, Biohazard Labeling, Biohazard Symbol, English/Spanish, 200/cs
854	Biohazard Bag, 25" x 30", 1.8 mil, 12-14 Gal., Clear/Black, Print/Label, Max. Temp 285°F, Biohazard Labeling, Biohazard Symbol, English/Spanish, 200/cs
855	Biohazard Bag, 31" x 38", 1.8 mil, 20-30 Gal., Clear/Black, Print/Label, Max. Temp 285°F, Biohazard Labeling, Biohazard Symbol, English/Spanish, 100/cs
856	Bag, 31" x 38", Print/Label, Max Temp 285°F, Biohazard Labeling, Biohazard Symbol, English/Spanish, Red/Black, 1.8 Mil, 20-30 Gal, 100/cs
858	Bag, 31" x 38", Print/Label, Max Temp 285°F, Biohazard Labeling, Biohazard Symbol, English/Spanish, Buff/Black, 1.8 Mil, 20-30 Gal, 100/cs
864	Bag, 38" x 47", Print/Label, Max Temp 285°F, Biohazard Labeling, Biohazard Symbol, English/Spanish, Buff/Black, 1.8 Mil, 40 Gal, 100/cs
872	Bag, 38" x 47", Print/Label, Max Temp 285°F, Biohazard Labeling, Biohazard Symbol, English/Spanish, Clear/Black, 1.8 Mil, 44 Gal, 100/cs
880	Biohazard Bag, 8" x 12", 1.8 mil, 1-2 Gal., Orange/Black, Print/Label, Max. Temp 285°F, Biohazard Labeling, Biohazard Symbol, English/Spanish, 400/cs
881	Biohazard Bag, 14" x 18", 1.8 mil, 3-4 Gal., Orange/Black, Print/Label, Max. Temp 285°F, Biohazard Labeling, Biohazard Symbol, English/Spanish, 400/cs
882	Biohazard Bag, 19" x 24", 1.8 mil, 7-10 Gal, Orange/Black, Print/Label: MaxTemp 285°F Biohazard Labeling, Biohazard Symbol, English/Spanish, 200/cs
884	Biohazard Bag, 25" x 35", 1.8 mil, 13-16 Gal., Orange/Black, Print/Label, Max. Temp 285°F, Biohazard Labeling, Biohazard Symbol, English/Spanish, 200/cs
886	Bag, 38" x 47", Print/Label, Max Temp 285°F, Biohazard Labeling, Biohazard Symbol, English/Spanish, Orange/Black, 1.8 Mil, 44 Gal, 100/cs
888	Bag, 106" x 86", Print/Label, Max Temp 285°F, Biohazard Labeling, Biohazard Symbol, English/Spanish, Clear/Black, 1.8 Mil, 60+ Gal, 25/cs

MEDICAL ACTION BIOHAZARD BAGS

117	Bag, Biohazard, 30.5" x 41", 1.5MI, Red w/biohazard symbol, 30 Gallon, 250/cs
294	Bag, Biohazard, 23" x 23", 1.2MI, Red, 500/cs

MEDICAL ACTION BIOHAZARDOUS WASTE BAGS

Meets A.S.T.M. dart test requirements. LLDPE film. Flat pack. Print label: Biohazardous/Infectious waste with biohazard symbol.

10-2002	Biomedical Waste Container, Corrugated Box w/liner, Flat Pack, 2.5 Gal, 6" x 10.75" x 12", Print: Biohazardous/Infectious Waste w/biohazard symbol, Color: Red/Black/Red, 30/cs
10-2005	Biomedical Waste Container, Corrugated Box w/liner, Flat Pack, 5 Gal, 12" x 12" x 12", Print: Biohazardous/Infectious Waste w/biohazard symbol, Color: Red/Black/Red, 25/cs
104M	33" x 40" Red Infectious Waste Bag, 1.2 mil, 250/cs
108M	25" x 34" Red Infectious Waste Bag, 1.2 mil, 250/cs
108MBX	25" x 34" Red Bag F-Code Series: Pass the ASTM D1922-67, 480 Gram Elmendorf Test, 1.2 mil, 50/bx, 4 bx/cs
108MP	25" x 34" Red Infectious Waste Bag, 1.2 mil, 25/pk, 10 pk/cs
109	38" x 45" Red Infectious Waste Bag, 1.5 mil, 200/cs
110	38" x 45" Red Infectious Waste Bag, 1.75 mil, 125/cs
115H	23" x 23" Red Infectious Waste Bag, 1.1 mil, 500/cs
116	23" x 23" Red Infectious Waste Bag, 1.5 mil, 500/cs
116BX	23" x 23" Red Bag F-Code Series: Pass the ASTM D1922-67, 480 Gram Elmendorf Test, 1.5 mil, 100/bx, 4 bx/cs
117A	31" x 41" Red Infectious Waste Bag, 2 mil, 250/cs
117M	31" x 41" Red Infectious Waste Bag, 1.2 mil, 250/cs
117MBX	30 1/2" x 41" Red Bag F-Code Series: Pass the ASTM D1922-67, 480 Gram Elmendorf Test, 1.2 mil, 50/bx, 4 bx/cs
117MP	30 1/2" x 41" Red Infectious Waste Bag, 1.2 mil, 25/pk, 10 pk/cs
119	31" x 41" Red Infectious Waste Bag, 3 mil, 125/cs
169	38" x 45" Red Infectious Waste Bag, 3 mil, 100/cs
172M	38" x 45" Red Infectious Waste Bag, 1.2 mil, 250/cs
173	43" x 48" Red Infectious Waste Bag, 2.0 mil, 100/cs
2122	43" x 55" Red Infectious Waste Bag, 1.5 mil, 200/cs
2125	43" x 55" Red Infectious Waste Bag, 3 mil, 100/cs

**TIDI BIO-HAZARD BAGS**

High density. Red.

8653	24" x 24" Biohazard Bag, 10 gal, 12 Microns, 250/cs
8654	24" x 37" Biohazard Bag, 16 gal, 12 Microns, 250/cs
8656	33" x 40" Biohazard Bag, 33 gal, 17 Microns, 250/cs
8657	40" x 48" Biohazard Bag, 40 gal, 17 Microns, 250/cs

TIDI CONTAMINATION KIT

Contains: Cadaver Bag, Chin Strap, Wrist & Ankle Ties, Cellulose Cavity Pad, ID Tags.

950358	Contamination Kit, Vinyl w/straight zipper, White, 36" x 90", 5/cs
--------	--



3M™ ATTEST™ BIOLOGICAL INDICATOR INCUBATORS

Attest Incubators provide optimal conditions for accurate readout of Attest Biological Indicators. Convenient, 14- or 28-vial capacity. Dry-block design pre-set to proper incubation temperature.

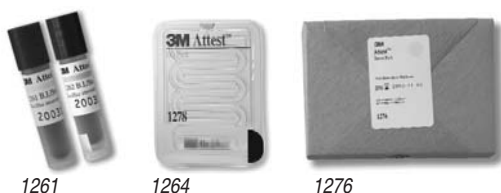
- 116 14-Vial (round) Incubator, 56°C Steam, 120 Nominal Voltage Required, 90-132V Acceptable
- 117 14-Vial (round) Incubator, 37°C EO, 120 Nominal Voltage Required, 90-132V Acceptable
- 126 28-Vial (2-tier) Incubator, 56°C Steam, 120 Nominal Voltage Required, 90-132V Acceptable
- 127 28-Vial (2-tier) Incubator, 37°C EO, 120 Nominal Voltage Required, 90-132V Acceptable
- 130 28-Vial (2-tier) Incubator, 37°C/56°C EO & Steam, 120 Nominal Voltage Required, 90-132V Acceptable



3M™ ATTEST™ STEAM-PLUS TEST PACK

For monitoring the steam sterilization process. Each test pack includes a 3M 1262 Biological Indicator and a 3M Comply™ (SteriGage™) Steam Integrator.

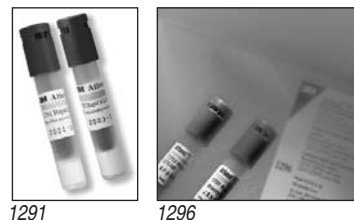
- 41380 Steam-Plus Test Pack For Steam, Consists of 1262 BI & Comply (SteriGage) Steam Integrator, 16 pk/bx, 4 bx/cs



3M™ ATTEST™ BIOLOGICAL INDICATORS & TEST PACKS

Biological indicators vials are easy to use and interpret with visual color readout in 24 hours (1261) or 48 hours (1262/1264). Test packs present a challenge to the sterilization process equivalent to the AAMI recommended test packs. Each test pack contains a 3M Attest™ 1262 or 1264 Biological Indicator.

- 1261 Indicators For Steam 270°F/132°C Gravity Displacement Steam Sterilizers, 24 Hour Readout, Blue Cap, 100/bx, 4 bx/cs
- 1261P Indicators For Steam 270°F/132°C Gravity Displacement Steam Sterilizers, 24 Hour Readout, Blue Cap, 25/bx, 4 bx/cs
- 1262 Indicators For Steam 270°F/132°C Vacuum Assisted or 250°F/121°C Gravity Sterilizers, 48 Hour Readout, Brown Cap, 100/bx, 4 bx/cs
- 1262P Indicators For Steam 270°F/132°C Vacuum Assisted or 250°F/121°C Gravity Sterilizers, 48 Hour Readout, Brown Cap, 25/bx, 4 bx/cs
- 1264 Ethylene Oxide, 48 Hour Readout, Green Cap, 100/bx, 4 bx/cs
- 1264P Ethylene Oxide, 48 Hour Readout, Green Cap, 25/bx, 4 bx/cs
- 1276 Test Pack For Steam 270°F/132°C Vacuum Assisted or 250°F/121°C Gravity Sterilizers, 25 Test Packs & 25 Controls, 48 Hour Readout, Brown Cap, 25/cs
- 1276F Test Pack For Steam 270°F/132°C Vacuum Assisted or 250°F/121°C Gravity Sterilizers, 25 Test Packs & 5 Controls, 48 Hour Readout, Brown Cap, 25/cs
- 1278 Test Pack For EO, Includes 25 Test Packs & 25 Controls, 48 Hour Readout, Green Cap, 25/bx, 2 bx/cs
- 1278F Test Pack For EO, Includes 25 Test Packs & 5 Controls, 48 Hour Readout, Green Cap, 25/bx, 2 bx/cs



3M™ ATTEST™ RAPID READOUT BIOLOGICAL INDICATORS & TEST PACKS

Biological indicators and test packs that monitor the effectiveness of the EO or steam sterilization process and provide results within 48 hours.

- 1291 Rapid Readout For Steam 270°F/132°C Gravity Displacement Sterilizers, 1 Hour Readout, Blue Cap, 50/bx, 4 bx/cs
- 1292 Rapid Readout For Steam 250°F/121°C Gravity or 270°F/132°C Vacuum Assisted Sterilizers, 3 Hour Readout, Brown Cap, 50/bx, 4 bx/cs
- 1294 Rapid Readout Biological Indicator For EO, 4-Hour Readout, Green Cap, 50/bx, 4 bx/cs
- 1296 Test Pack For Steam 250°F/121°C Gravity or 270°F/132°C Vacuum Assisted Sterilizers, Includes 25 Test Packs & 25 Controls, 3 Hour Readout, Brown Cap, 25/cs
- 1296F Test Pack For Steam 250°F/121°C Gravity or 270°F/132°C Vacuum Assisted Sterilizers, Includes 25 Test Packs & 5 Controls, 3 Hour Readout, Brown Cap, 25/cs
- 1298 Rapid Readout Biological Indicator Test Pack For EO Includes 25 Test Packs + 25 Controls, 4-Hour Readout, Green Cap, 25/bx, 2 bx/cs
- 1298F Rapid Readout Biological Indicator Test Pack For EO Includes 25 Test Packs + 5 Controls, 4-Hour Readout, Green Cap, 25/bx, 2 bx/cs

3M™ ATTEST™ RAPID 5 STEAM PLUS TEST PACK

Fast, easy to use to steam test packs containing a 3-hour 3M Attest™ Rapid Readout Biological Indicator (BI) plus a moving front 3M (SteriGage™) Class 5 Integrating Indicator.

- 41382 Test Pack, 1/cs



3M™ BIOLOGICAL INDICATOR MONITORING STARTER KIT

Everything you need for effective monitoring of the steam sterilization process. Consists of one roll of 3M Comply™ 1222-6N Indicator tape, one box of 3M Attest™ 1262P Biological Indicators, one 3M Attest™ 116 Incubator, one bag of 3M Comply™ 1243B Chemical Integrators, one 3M 1266 Log Book, In-service Video and Wall Chart.

- 115 Starter Kit For Steam, Contains (1) 1222-6 Indicator Tape, (1) bx 1262P Biological Indicators, (1) 116 Incubator, (1) bg 1243B Chemical Integrators, (1) 1266 Log Book, Inservice Video & Wall Chart

SULTAN SPOROX® TEST VIALS

Now, a new and faster way to test your Sporox® Sterilizing and Disinfecting Solution. Test vials provide a rapid, convenient qualitative means of indicating whether effective concentrations of hydrogen peroxide are present in your Sporox® II solution. Kit includes a test vial containing a reagent that when mixed with a drop of the indicator solution and a sample of the Sporox® II solution being tested will change color after two minutes to determine if the solution is still effective.

- 75195 Sporox Test Vials Intro Kit: (30) Test Vials, Bottle of Indicator Solution, Pipettor, (30) Disposable Pipette Tips, 1 kit/bx
- 75196 Sporox Test Vials Refill Kit: (30) Test Vials, Bottle of Indicator Solution, (30) Disposable Pipette Tips, 1 kit/bx



3M™ COMPLY™ BOWIE-DICK TYPE TEST SYSTEMS

Monitors sterilizer operation and air removal for vacuum-assisted steam sterilizers.

- 00130 Internal Steam Indicator Sheets, 50/bx, 5 bx/cs
- 00135 Plus Test Pack w/early warning test sheet, Disposable, 4/bg, 5 bg/bx, 4 bx/cs
- 1233 Test Pack, Disposable, 30/cs



3M™ COMPLY™ (ATI™ STERILABEL™) CHEMICAL INDICATOR LABELS

Peel-off, pressure sensitive labels for hard-surfaces items such as unwrapped glass or metal.

- 00160 Indicator Labels For Steam, Color Changes From Purple to Green, 1000/rl, 12 rl/cs
- 00170 Indicator Labels For Dry Heat Sterilizes 340°F/170°C or Above, Indicator Ink on the Label Turns From Tan to Black Within 5 Minutes at 340°F/170°C, 1000/rl, 12 rl/cs



3M™ COMPLY™ (ATI™) STEAM CHEMICAL INDICATOR STRIPS

- 00107 5/8" x 8 1/2" Indicator Strips For Steam, Color Change From White to Black, Long Form, 250/bx, 20 bx/cs
- 00109 5/8" x 4 1/4" Indicator Strips For Steam, Color Change From White to Black, Short Form, 250/bx, 20 bx/cs
- 00109A 5/8" x 4 1/4" Indicator Strips For Steam, Color Change From White to Black, Short Form, 1000/bx, 4 bx/cs



3M™ COMPLY™ (ATI™) STEAM CHEMICAL INDICATOR-PLUS STRIP

Each strip has two purple ink bars that change color in sequence during exposure to saturated steam. A clear protective coating over the ink bars prevents the ink from touching items being sterilized.

- 00117 5/8" x 4 1/4" Indicator Strips For Steam 270°F/132°C Gravity & Vacuum Assisted Sterilizers, Color Change From Purple to Yellow, Laminated, Short Form, 200/bx, 20 bx/cs
- 00118 5/8" x 7 3/8" Indicator Strips For Steam 270°F/132°C Gravity & Vacuum Assisted Sterilizers, Color Change From Purple to Yellow, Laminated, Long Form, 200/bx, 20 bx/cs
- 00119 5/8" x 4 1/4" Indicator Strips For Steam 270°F/132°C Gravity Sterilizers, Color Change From Purple to Yellow, Laminated, Short Form, 200/bx, 20 bx/cs



3M™ COMPLY™ (COLD STERILOG™) GLUTARALDEHYDE MONITORS

Chemical monitors that indicate if a glutaraldehyde solution meets the manufacturer's recommendation for a minimum effective concentration (MEC) needed to effectively kill organisms.

- 3983MM Black Framed Pad Turns Yellow When Above 1.5% MEC Concentration, 60/btl, 2 btl/cs
- 3987 Black Framed Pad Turns Yellow When Above 1.8% MEC Concentration, 60/btl, 2 btl/cs
- 3989 Black Framed Pad Turns Yellow When Above 2.1% MEC Concentration, 60/btl, 2 btl/cs



1243A



1244A



41360

3M™ COMPLY™ (STERIGAGE™) CHEMICAL INTEGRATORS

3M Comply™ Chemical Integrators offer an immediate, accurate and easy-to-read method of monitoring sterilization process conditions inside each pack. For use in EO/HCFC gas mixture sterilization cycles. "Moving front" style has accept/reject readout for instant results with easy interpretation, convenient small size for all packs with optional extenders available for easy retrieval from inner packs.

- 1240E 7 1/2" x 3/8" Extenders Only, For Use w/steam or EO integrators, 5000/cs
- 1243A 2" x 3/4" Integrators For Steam, Moving Front, 500/pk, 2 pk/cs
- 1243B 2" x 3/4" Integrators For Steam, Moving Front, Convenience Pack, 100/pk, 10 pk/cs
- 1243E 9" x 3/8" Integrators w/extender for steam, Moving Front, 1000/cs
- 1244A 2" x 3/4" Integrators For EO Mixture, Moving Front, 500/pk, 2 pk/cs
- 1244B 2" x 3/4" Integrators For EO Mixture, Moving Front, Convenience Pack, 100/pk, 10 pk/cs
- 1244E 9" x 3/8" Integrators w/extender for EO mixture, Moving Front, 1000/cs
- 41360 Integrator Test Pack w/steam chemical integrator, 16/bx, 4 bx/cs



1250



1251

3M™ COMPLY™ EO AND STEAM CHEMICAL INDICATOR STRIPS

For use in 100% EO and EO/HCFC gas mixtures. Long stripe of chemical indicator ink printed on perforated-style strip. Allows full- or half-length use in different pack sizes. Indicator changes color from red to green when exposed to ethylene oxide sterilization conditions.

- 1250 5/8" x 8" Indicator Strips For Steam, Color Change From White to Dark Brown/Black, Perforated, 240/bx, 8 bx/cs
- 1251 5/8" x 8" Indicator Strips For 100% EO & EO Mixture, Color Change From Red to Green, Perforated, 240/bx, 4 bx/cs

Controls/Indicators

3M™ COMPLY™ GAS PLASMA CHEMICAL INDICATORS

An internal pack chemical indicator for use in STERPAD® Sterilization Processes (Model 50, 100S, and 200). Indicator changes from blue to pink when exposed to vapor hydrogen peroxide. Indicator color does not fade when exposed to light.

- 1228 3/4" x 60 yd Gas Plasma Indicator Tape, 24/cs
1248 13/16" x 4" Gas Plasma Chemical Indicator Strips, 250/bx, 4 bx/cs



3M™ COMPLY™ LIQUID PERACETIC ACID CHEMICAL INDICATOR

Single-use chemical indicator for use in the Steris® System 1 processor. Indicator changes from red (unprocessed) to lime green (processed) color for easy interpretation when exposed to the appropriate concentration of sterilant. Large size and distinct color for easy retrieval of the indicator from processor.

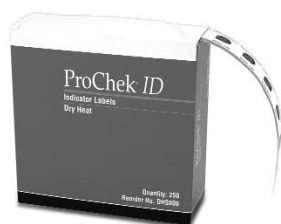
- 1249 Liquid Peracetic Acid Chemical Indicator, 50/bx, 4 bx/cs



3M™ ETHYLENE OXIDE MONITOR

A lightweight badge with ethylene-oxide sensitive material that clips to label or pocket near breathing zone for monitoring of personnel during a work shift.

- 3550 EO Monitoring Badge, 5/cs



CERTOL PROCHEK® ID DRY HEAT INDICATOR LABEL

Easy to use peel and stick labels designed as dry heat sterilization external indicator on nylon tubing. Turns from green to black.

- DHS006 Dry Heat Indicator Label, 3/4" x 1 5/16", 250/bx, 6 bx/cs



CERTOL PROCHEK® S STEAM STERILIZATION INTEGRATORS

Multiparameter indicator strip for sterilization monitoring inside pouches, cassettes and packs. Ink resists color change until conditions of time, temperature and steam exposure meet sterilization conditions. Immediate results. Easy to use.

- TS1440 5 11/16" x 7/8" Steam Sterilization Integrators, 100/bx, 6 bx/cs



CBMS10



CSBI25

CONFIRM™ IN-OFFICE BIOLOGICAL MONITORING SYSTEM

In-office system for monitoring steam sterilizers. Easy to use and interpret. Results in 24 hours. Simply process vial in a normal sterilizer cycle. Then activate vial, incubate, and record results. If any spores survive the process, the vial medium will turn yellow. The incubator is 24 volt and holds up to 14 indicators. Indicators are also compatible with the current 3M Attest incubator.

- CBMS10 Steam System Includes 25 Indicators, Incubator, Record Keeper
CSBI25 Steam Biological Indicators, 25/bx, 4 bx/cs



CONFIRM™ MAIL-IN MONITORING SERVICE

The Confirm strips contain both *Bacillus stearothermophilus* and *Bacillus subtilis* spores and therefore may be used to test all sterilization processes—steam, chemical vapor, dry heat and ethylene oxide. Mail-in sterilizer monitoring service provides: test results in 24 hours, the ability to check results online, a free reminder program, peace of mind and sterility assurance. Easy to use: 1) Sterilize, 2) Mail, 3) Get results, 4) Get proof. Economical, one of the most cost-effective methods of biological monitoring.

- CST060 Mail-In Monitoring Service, 6 tests/bx, 12 bx/cs
CST120 Mail-In Monitoring Service, 12 tests/bx, 6 bx/cs
CST480 Mail-In Monitoring Service, 48 tests/bx, 1 bx/cs

CONFIRM™ VALUE TEST MAIL-IN

Confirm biological monitoring services include: culturing service, immediate test failure notification, confidential online test results, reminder if you forget to test, expired product replacement program, certificate of participation, quarterly results report. Does not include prepaid envelopes.

- CVT120 Mail In Monitoring Service, 1 Test Strip w/control Strip, 12 tests/bx, 6bx/cs
CVT520 Mail In Monitoring Service, 1 Test Strip w/control Strip, 52 tests/bx



3M™ ATTEST™ LOG BOOKS AND RECORD CHARTS

A complete record keeping system that maintains your sterilization process information for steam and EO sterilization. The system includes record charts and preprinted log books for each 3M Attest™ biological indicator product.

1266	Log Book w/50 record charts for steam sterilization, For Use w/Attest 1261/1262
1266-A	Log Book w/50 record charts For Steam Sterilizers, Brown, For Use w/1261 or 1262
1267-A	Log Book w/50 record charts, Green, For Use w/1294
1268	Log Book w/50 Record Charts For EO Sterilization, For Use w/Attest 1264
1280-A	Log Book w/50 record charts, Blue, For Use w/1291
1283	Log Book w/50 Record Charts, For Use w/Attest Rapid Readout 1292
1283-A	Log Book w/50 record charts, Brown, For Use w/1292

3M™ COMPLY™ (ATI™) RECORD KEEPING SYSTEM

A complete record keeping system for steam and EO gas sterilizers that help you maintain your sterilization process information. The system is comprised of sterilizer record cards, record labels, envelopes, and a record book for storing results.

67200	3" x 5" Cards For Steam & EO, Consists of 2 Chemical Indicator Strips, One Changes From Blue to Black When Exposed to Steam, The Other Changes From Gold to Rust/Red When Exposed to EO, Packed in Hinged Plastic Box, 250/bx, 4 bx/cs
67201	4" x 5 1/2" Cards For Steam & EO, Consists of 2 Chemical Indicator Strips, One Changes From Blue to Black When Exposed to Steam, The Other Changes From Gold to Rust/Red When Exposed to EO, Packed in Cardboard Box, 250/bx, 4 bx/cs



3M™ COMPLY™ LABEL GUN SYSTEM

A system consisting of sterilization load labels and a printing applicator that applies the labels to packages and record forms of envelopes. Load labels preprinted with expires and with sterilized.

1256B	Label Applicator (replaces 1256 & 1256A), For Use w/1257 & 1269 Series Labels
1257B	Blue Labels "Expires", Use w/1256, 1256A, 1256B Label Applicators, 1125/rl, 12 rl/cs
1257BL	Black Labels "Expires", Use w/1256, 1256A, 1256B Label Applicators, 1125/rl, 12 rl/cs
1257G	Green Labels "Expires", Use w/1256, 1256A, 1256B Label Applicators, 1125/rl, 12 rl/cs
1257R	Red Labels "Expires", Use w/1256, 1256A, 1256B Label Applicators, 1125/rl, 12 rl/cs
1257W	White Labels "Expires", Use w/1256, 1256A, 1256B Label Applicators, 1125/rl, 12 rl/cs
1269B	Blue Labels "Sterilized", Use w/1256, 1256A, 1256B Label Applicators, 1125/rl, 12 rl/cs
1269BL	Black Labels "Sterilized", Use w/1256, 1256A, 1256B Label Applicators, 1125/rl, 12 rl/cs
1269G	Green Labels "Sterilized", Use w/1256, 1256A, 1256B Label Applicators, 1125/rl, 12 rl/cs
1269R	Red Labels "Sterilized", Use w/1256, 1256A, 1256B Label Applicators, 1125/rl, 12 rl/cs



3M™ COMPLY™ RECORD KEEPING SYSTEM

A complete system for maintaining and storing sterilization process information for steam and EO sterilization. Includes load record cards, record forms and sheets, envelopes, and a record binder for storing results.

1252	3" x 5" Cards For Steam, Turns From White to Black, 240/bx, 4 bx/cs
1253	3" x 5" Cards For EO, Turns From Rust to Green, 240/bx, 2 bx/cs
1254-A	Sterilization Record System Binder w/50 each 1254-A Envelopes & 1254S-A Sheets
1254B	Binder For Use w/1254E Envelopes, 10 3/4" x 11 3/4"
1254E-A	Sterilization Record Envelopes, 9 1/2" x 11 1/2" w/2 load-contents columns, For Steam, Flash or Low Temp Systems, 100/pk, 5 pk/cs
1254E-F	Steam Flash Envelopes For Use w/1254B Binder, 9 1/2" x 11 1/2", 100/pk, 5 pk/cs
1254E-LT	Low Temperature Envelope For Use w/1254B Binder, 9 1/2" x 11 1/2", 100/pk, 5 pk/cs
1254E-S	Steam Sterilization Envelope For Use w/1254B Binder, 9 1/2" x 11 1/2", 100/pk, 5 pk/cs
1254S-A	Sterilization Record Sheets, 8 1/2" x 11 1/2" w/2 load-contents columns, For Steam, Flash or Low Temp Systems, 250/pk, 4 pk/cs

HCPRO INFECTION CONTROL FOR THE PHYSICIAN OFFICE

Here is the guide clinicians need to understand how infection control (IC) applies to them in the ambulatory process. It describes the steps physicians and their staff should take to protect patients, staff, and the environment and prevent the spread of infectious diseases.

ICMOC Manual



CERTOL PROE-VAC LIQUID EVACUATION SYSTEM CLEANER

Non-foaming biodegradable evacuation system cleaner leaves a fresh mint scent. Cleans and deodorizes the entire evacuation system. Regular use keeps tubing and pumps free-flowing. Low pH ensures complete penetration through soil, yet is gentle to the evacuation system.

PVAC128	Liquid Evacuation System Cleaner, 1 Gallon Bottle w/pump, 4/cs
PVACB-1	Empty One Gallon Mixing Container With "No-Spill" Connector For Saliva Ejector & High Volume Suction Lines, 1/cs
PVACU24	Liquid Evacuation System Cleaner, 1 oz Unit Dose Tubes, 24/bx, 6 bx/cs

Disinfectants/Sterilants



2683



2924

J&J/ASP CIDEX PLUS® 28 DAY SOLUTION

A 3.4% glutaraldehyde that achieves high level disinfection in 20 minutes at 25°C. Excellent compatibility, 28 day reuse life and pleasant mint fragrance.

- 2683 Cidex Plus, Quarts, 4/cs
 2785 Cidex Plus, Gallons, 4/cs
 2924 Cidex Plus Test Strips, 60 strips/btl, 2 btl/cs
 2926 Cidex Plus Test Strips, 15 strips/btl, 2 btl/cs



2245



2250



2920

J&J/ASP CIDEX® ACTIVATED DIALDEHYDE SOLUTION

A 2.4% glutaraldehyde that achieves high level disinfection in 45 minutes at 25°C. No surfactant, 14 day reuse life.

- 2250 Cidex, Gallons, 4/cs
 2920 Cidex Test Strips, 60 strips/btl, 2 btl/cs
 2927 Cidex Test Strips, 15 strips/btl, 2 btl/cs



J&J/ASP CIDEX® OPA SOLUTION

A fast and effective way to disinfect a wide range of instruments and endoscopes. A (0.55%) ortho-phthalaldehyde solution, effective at room temperature and has excellent tuberculocidal and high level disinfection capabilities. High level disinfection in 12 minutes. Low odor. Easily rinses from equipment, especially lumened devices. Requires no activation or mixing. 14-day reuse life and two-year shelf life. Can be discarded down hospital and office drains in accordance with local regulations.

- 20390 One Gallon Container OPA Solution, 4/cs
 20392 Test Strips OPA Solution, 60/btl, 2 btl/cs
 20393 Test Strips OPA Solution, 15/btl, 2 btl/cs



METREX COMPLIANCE STERILIZING & DISINFECTION SOLUTION

Liquid chemical sterilant and high-level disinfectant reusable for up to 14 days. Hydrogen peroxide/peracetic acid formula that offers a superior alternative to glutaraldehyde formulas. Does not require activation of test strips. Achieves high-level disinfection in 15 minutes at 68 degrees F. Achieves sterilization in 3 hours at 68 degrees F.

- 10-2500 Compliance Gallons (NOT for use w/flexible endoscopes), 4/cs

8,000

facilities count on it

45

countries use it

8

years of experience prove it



Already a CIDEX® OPA Solution user?

Sign up for the top infection prevention newsletter, *Frontiers in Infection Prevention*—created for you by ASP's industry professionals. Please visit www.cidex.com/frontiers to learn more. We'll send you a free CIDEX® OPA Solution reprocessing timer to say thank you when you sign up.

ASP
CIDEX® OPA
 ortho-Phthalaldehyde Solution

ADVANCED STERILIZATION PRODUCTS

Division of Ethicon, Inc.
 a **Johnson & Johnson** company

* 2008 Healthcare Products Information Services (HPIS) data, HLD Market Assessment.
 ©Ethicon, Inc. 2009 AD-090048-01-US_A



METREX METRICIDE 28® DISINFECTING SOLUTION

A long-life, buffered glutaraldehyde that can be used and reused as a sterilant and high-level disinfectant for up to 28 days. Recommended for immersible medical and dental instruments. Contains a surfactant to enhance the disinfection process and contains a rust-inhibitor to reduce corrosion. No dilution is required.

10-2800 MetriCide 28, Gallon, 4/cs
10-2805 MetriCide 28, Quart, 16/cs



METREX METRICIDE PLUS 30® DISINFECTING SOLUTION

A long-life, 3.4% buffered glutaraldehyde that can be used and reused at full strength for up to 28 days. It is the extra-strength solution for the sterilization and disinfection of immersible medical and dental instruments.

10-3200 MetriCide Plus 30 Gallon, 4/cs
10-3205 MetriCide Plus 30 Quart, 16/cs



METREX METRICIDE® DISINFECTION SOLUTION

A 2.6% buffered glutaraldehyde that can be used and reused as a sterilant and high-level disinfectant on immersible lensed and delicate instruments for up to 14 days. Safe for use on lensed instruments, and is compatible with plastic, rubber, metal and other material used in medical and dental instrumentation, and equipment requiring disinfection or sterilization. No dilution is required.

10-1400 MetriCide, Gallon, 4/cs
10-1405 MetriCide, Quart, 16/cs



OMNICIDE™ 14-DAY HIGH LEVEL DISINFECTANT/STERILANT

A 2.6% buffered glutaraldehyde that can be reused as a sterilant and high-level disinfectant on immersible lensed and heat sensitive instruments for up to 14 days. Safe for use on lensed instruments and is compatible with plastic, rubber, metal and other material used in medical and dental instrumentation and equipment requiring disinfection or sterilization. No dilution is required.

N099001 Omnicide™ Gallon, 2.6% Buffered Glutaraldehyde, 4/cs



OMNICIDE™ 28-DAY HIGH LEVEL DISINFECTANT/STERILANT

A long-life, buffered glutaraldehyde that can be reused as a sterilant and high-level disinfectant for up to 28 days. Recommended for immersible and heat sensitive instruments. Contains a surfactant to enhance the disinfection process and contains a rust-inhibitor to reduce corrosion. No dilution is required.

N099002 Omnicide™ Gallon, 2.8% Buffered Glutaraldehyde, 4/cs

SULTAN SPOROX II STERILIZING & DISINFECTING SOLUTION

A virucidal, sporocidal, tuberculocidal, bactericidal and fungicidal solution. Powerful hydrogen peroxide formula is safer for your staff and more effective on your instruments than any noxious glutaraldehyde solution. Oxidizes away dental debris quickly and effectively at room temperature. Pleasant to use with no foul odor. Disinfects in 30 minutes at room temperature. Sterilizes in six hours at room temperature.

75156 Sterilizing & Disinfecting Solution, Gallon, 4/cs



METREX PREMIDEX® ALDEHYDE DEACTIVATION SYSTEM

Deactivates 10% formalin and up to 4% glutaraldehyde solutions. Complete deactivation in only 5 minutes. Easy and safe to use. Protects healthcare workers by neutralizing aldehyde solutions.

ADS-2-810 Aldehyde Deactivator, Treats Up To 2.75 Gallons, 22 oz, 6 btl/cs

Instrument Cleaning

PRO ADVANTAGE® ENZYMATIC DETERGENT

This product can be used as a presoak, manual detergent, ultrasonic cleaning solution and evacuation system cleaner. Concentrated formula makes 128 treatments of evac system cleaner; or 512 treatments for ultrasonic cleaning solution/presoak. Biodegradable; spearmint scent.

6198	Enzymatic Detergent Concentrate, Gallon
6198-NDC	Enzymatic Detergent Concentrate, Gallon, 4/cs



CERTOL PROEZ™ AW QUAD ENZYME AUTOMATIC WASHER DETERGENT

A premium non-foaming quadruple enzyme instrument cleaning detergent designed for use in high impingement automated washers/decontaminators. The four enzyme formula rapidly digests complex soils. Anticorrosive system protects delicate instruments. Also useful in manual, ultrasonic and endoscope cleaning systems. Ideal for standardization.

PREZAW050	5 Gallon Instrument Detergent w/spigot
PREZAW128	1 Gallon Bottle Instrument Detergent w/1 oz pump, 4/cs
PREZAW150	15 Gallon Drum Instrument Detergent
PREZAW300	30 Gallon Drum Instrument Detergent
PREZAW550	55 Gallon Drum Instrument Detergent

BURNISHINE INSTRUMENT DETERGENT & LUBRICANT

Unique detergent lubricates while it cleans. Neutral ph, biodegradable, rinsing agent and rust inhibitors.

TL-01	Lubriclean, Gallon, 4/cs
-------	--------------------------



S-5N

S-5NQ

BURNISHINE INSTRUMENT GERMICIDAL SOLUTION

Rust inhibited, will not damage surgical instruments. Ready to use germicide kills TB, HIV-1, Polio, Staph, Strep, Salmonella and other germs.

S-5N	Gallon Instrument Germicidal Solution, 4/cs
S-5NQ	32 oz Instrument Germicidal Solution, 12/cs



CERTOL PROWASH™ MULTIPURPOSE DETERGENT & CART WASH CONCENTRATE

A neutral pH, non-foaming concentrated instrument washer detergent. Effective cleaning for all types of metal and plastic instruments, aluminum items, trays and carts. Chelating and rinse agents compensate for hard water conditions and reduces spotting making it ideal for use in high pressure cart washers.

PW050	ProWash 5 gal Bottle w/spigot, 1/cs
PW128	ProWash 1 gal. Bottle w/1 oz. Pump, 4/cs
PW150	ProWash 15 gal. Drum
PW300	ProWash 30 gal. Drum
PW550	ProWash 55 gal. Drum

ESI CART WASH AND RINSE

Designed for high pressure washers. The non-foaming alkaline cleaner promotes spot free drying. It is pH neutral. Safe for all types of carts and equipment. The highly concentrated cart rinse creates "sheeting" action which reduces drying time.

2000815	Rinse, 5 Gallon
2000820	Rinse, 15 Gallon
2000830	Wash, 5 Gallon
2000835	Wash, 15 Gallon
2000840	Wash, 30 Gallon

KIMBERLY-CLARK MULTI-ENZYME DETERGENT

Proper cleaning of medical devices is the critical step in decontamination, prior to disinfection or sterilization. Kimberly-Clark's new Multi-Enzyme Detergent, with a synergistic formulation of enzymes plus detergent, rapidly removes contaminants from reusable medical devices. The Pre-Cleaning Detergent Spray begins the process of breaking down medical soils on devices following procedures; a quick spray thoroughly coats external instrument surfaces and helps maintain a moist environment during transport.

65201	Multi-Enzyme Detergent, 1 Gallon Bottle, 4/cs w/1 pump
65205	Multi-Enzyme Detergent, 5 Gallon Container
65224	Pre-Cleaning Detergent Spray, 24 oz. Spray Bottle, 12/cs

L&R GENERAL PURPOSE CLEANER AMMONIATED

Extra strength for laboratory use. Ideal for instruments, molds, bridges and crowns. Brightens the appearance of both precious and non-precious alloys. Concentrated. Available in gallons.

226	Ammoniated General Purpose Cleaner, Concentrate, 4 gal/cs
-----	---



MEDICAL CHEMICAL MEDIZIME® ENZYMATIC CLEANER

A mild, concentrated, low foaming, enzymatic cleaner for endoscopes and surgical instruments MEDIZIME® is similar to WAVIZYME® except that is formulated with a low foaming nonionic surfactant. MEDIZIME® is intended for use in automatic cleaning devices.

3304LF	Medizime® Low Foam Enzymatic Cleaner, 128 oz. Pump Bottle
3312LF	Medizime® Low Foam Enzymatic Cleaner, 32 oz. Pump Bottle
3336LF	Medizime® Low Foam Enzymatic Cleaner, 1 oz. Packets, 36/cs



MEDICAL CHEMICAL WAVIZYME® ENZYMATIC CLEANER

A mild, concentrated, bacteriostatic, enzymatic cleaner for endoscopes and surgical instruments. WAVIZYME® is a unique combination of 2 enzymes and detergents formulated to safely eliminate proteinaceous contaminants from flexible optic scopes, surgical instruments and general laundry. WAVIZYME® is intended for use in manual systems or automatic cleaning devices. It has a pH of 6.3 to 6.5 which makes it completely compatible with WAVICIDE®-01. WAVIZYME® is a completely biodegradable and contains no phosphates. Contains 10% isopropyl alcohol.

3304	Wavizyme® Enzymatic Cleaner 128 oz. Pump Bottle
3312	Wavizyme® Enzymatic Cleaner 32 oz. Pump Bottle
3336	Wavizyme® Enzymatic Cleaner 1 oz. Packets, 36/cs

STANBIO BIO-CLEAN™

A highly refined concentrate for cleaning laboratory instruments, glassware, surgical instruments, porcelain, metal rubber and plastics. Destroys odors wherever they exist. 5ml dilutes to 1 gallon.

0602-380 Laboratory Detergent/Deodorizer, 1 gal plastic jug

STANBIO BIO-CLEAN™ II

Cleaner, disinfectant, detergent, fungicide (against pathogenic fungi) deodorizer, Mildewstat (on hard inanimate surfaces), virucide. A phosphate free detergent/disinfectant designed to provide effective cleaning, deodorizing and disinfection specifically for hospitals, nursing homes, schools, food processing plants and other institutions where housekeeping is of prime importance in controlling the hazard of cross contamination. 1 oz. dilutes to make 1 gallon of solution.

0640-001 Laboratory Detergent, Disinfectant, 32 oz. plastic bottle

COVIDIEN/US SURGICAL DEXIDE™ FRED™ ENDOSCOPIC SOLUTIONS

Provides visualization during an endoscopic procedure when fogging is a problem.

22001 Anti-Fog Kit, Single Use Only, 20/bx

ESI HIGH SUDS INSTRUMENT DETERGENT

Concentrated instrument cleaner contains rust inhibitors, removes soils, stains and rinses clean.

2000745	High Suds Detergent, Gallon, 4/cs
2000750	High Suds Detergent, 5 Gallon
2000770	High Suds Detergent, 15 Gallon

ESI LOW FOAM INSTRUMENT DETERGENT

Highly concentrated/neutral instrument cleaner. Built-in lubricant. pH neutral. Instrument safe.

2000960	Low Foam Detergent, Gallon, 4/cs
2000965	Low Foam Detergent, 5 Gallon
2000970	Low Foam Detergent, 15 Gallon

ESI MEDICAL ENZYME DETERGENT

A multi-enzyme detergent concentrate formulated to be especially effective in the removal of organic material such as blood, tissue, mucus, feces and other organic material found on instruments.

2000920	Medical Detergent, Gallon, 4/cs
2000925	Medical Detergent, 5 Gallon
2000930	Medical Detergent, 15 Gallon
2000935	Medical Detergent, 30 Gallon
2000944	Medical Detergent, RTU Spray, 32 oz, 12/cs

ESI MEDICAL ENZYME DETERGENT - MILD FOAMING

Designed for manual cleaning and ultrasonics. pH neutral-safe for all instruments and medical devices. Thoroughly remove proteins, blood, and fatty tissues from instruments and other medical devices.

2000921	Medical Detergent Mild Foaming, Gallon, 4/cs
2000941	Medical Detergent Mild Foaming Plus, Gallon, 4/cs

ESI MEDICAL ENZYME DETERGENT PLUS

A concentrated blend of multi-enzyme and surfactants and has double the concentration of enzymes that the regular formula has.

2000940	Medical Detergent Plus, Gallon, 4/cs
2000945	Medical Detergent Plus, 5 Gallon
2000950	Medical Detergent Plus, 15 Gallon
2000955	Medical Detergent Plus, 30 Gallon

ESI ALKALINE INSTRUMENT DETERGENT

Highly concentrated high pH detergent for cleaning surgical instruments and medical devices. Strong buffer system maintains a high pH for optimum cleaning. Contains rust inhibitors that protects your instruments investments

2000850	Alkaline Detergent, Gallon, 4/cs
2000855	Alkaline Detergent, 5 Gallon
2000860	Alkaline Detergent, 15 Gallon
2000865	Alkaline Detergent, 30 Gallon

ESI NEUTRAL PH INSTRUMENT DETERGENT

Concentrated instrument cleaner. Special surfactant prevents spotting. Contains rust inhibitors.

2000730	Neutral pH Detergent, Gallon, 4/cs
2000735	Neutral pH Detergent, 5 Gallon
2000740	Neutral pH Detergent, 15 Gallon

ESI NEUTRALIZING RINSE

Concentrated. Mildly acidic. Neutralizes alkaline residue leaves no spots on instruments.

2000755	Rinse, Gallon, 4/cs
2000760	Rinse, 15 Gallon
2000765	Rinse, 30 Gallon
2000870	Rinse, 5 Gallon

3M™ RAPID MULTI-ENZYME DETERGENT

For cleaning metallic and plastic medical instruments including endoscopes.

70500B	Rapid Multi-Enzyme Detergent, 5 Liter Bottle, 3/cs
70500D	Rapid Multi-Enzyme Detergent, 1 Liter Bottle, 12/cs

Instrument Cleaning

BURNISHINE CUTS-IT INSTRUMENT SPRAY

Specially formulated pre-soak spray and cleaner designed to remove blood, fat, tissue and body fluids safely from surgical instruments and apparatus. Immediately after the procedure, or prior to processing, spray the soiled area on the instrumentation. The unique chemical properties will penetrate and solubilize blood and fats. The wetting agents will keep instruments moist for hours allowing for safer and easier processing in decontamination.

BC32 Cuts-It Instrument Spray, 32 oz., 12/cs



BURNISHINE ALKA-WASH DETERGENT

Low suds alkaline detergent for use with ultrasonic cleaners and automatic washers. Safe on all metal, plastic and glass.

AW1B Alka-Wash Detergent, 1 gal, 4/cs (INTERNAL USE ONLY)
 AW30B 30 Gallon Detergent
 AW5B 5 Gallon Detergent



BURNISHINE ENZYCLEAN II ENZYMATIC DETERGENT

Specially formulated pre-soak and cleaner designed to provide one step cleaning of delicate fiber optic equipment such as endoscopes and cystoscopes as well as other surgical instruments including those used for eye, cardiovascular and general surgery. It is designed as a soak solution for surgical instruments to be used immediately following their use in a surgical procedure.

EBL1 EnzyClean II Single Enzyme, 4/cs
 EBL5 EnzyClean III Single Enzyme, 5 gal (INTERNAL USE ONLY)
 Z6 EnzyClean II Enzymatic Detergent, 4/cs

BURNISHINE ENZYMATIC CLEANER

128EME Multi Enzyme Detergent, 1 gal, 4/cs (INTERNAL USE ONLY)
 B9 Gallon Enzymatic Cleaner, 4/cs



BURNISHINE LOW SUDS INSTRUMENT DETERGENT

B1 Low Suds Instrument Detergent, Neutral Base, Gallon, 4/cs

BURNISHINE MANUAL USE DETERGENT

B2 High-Suds Liquid Detergent, Gallon, 4/cs
 B3 Powdered Cleaner Detergent, 5 lb, 6/cs

BURNISHINE RINSE AID

Rinsing agent allows instruments to dry spot free.

BR-1 5 Gallon Rinse Aid



BURNISHINE RUST & STAIN REMOVER

Quickly and safely removes stains and rust from surgical instruments and autoclaves. Can be used in ultrasonic cleaner.

T-5 Cool Soak Rust & Stain Remover, Gallon, 4/cs



METREX METRISHINE™ DESCALER AND RUST REMOVER

A two-in-one product that enhances the life and efficiency of instruments, automated washers and equipment. Removes water scale and mineral deposits in automated washers and autoclaves. Removes rust stains, spotting and corrosion from stainless steel instruments. Free rinsing, does not leave a residue. Saves money by restoring instruments instead of replacing or repairing them.

10-9300 MetriShine, 1 gal, 4 gal/cs
 10-9350 MetriShine, 5 gal



MILTEX SURGICAL INSTRUMENT STAIN REMOVER

Removes stains and tarnish from surgical and dental instruments. Restores luster to stainless steel, chrome, nickel, brass, copper and silver. Features special powdered formula that does not harm instrument surfaces. 3 oz. jar.

3-740 Surgical Instrument Stain Remover, 12/cs



CERTOL PROCLENSE™

Powerful multipurpose detergent for cleaning and lubricating stainless steel surgical instruments in one step. Low foaming ProClense may be used in manual systems, ultrasonic cleaners and washer sterilizer/decontaminators.

ICL128	Gallon Instrument Detergent, 4/cs
PC1050	5 Gallon Pail Instrument Detergent, 1/cs
PC1150	15 Gallon Drum Instrument Detergent, 1/cs
PC1300	30 Gallon Drum Instrument Detergent, 1/cs
PC1550	55 Gallon Drum Instrument Detergent, 1/cs



CERTOL PROCLENSE™ PLUS

One-step alkaline moderate detergent lubricant. A non-foaming, multipurpose, concentrated cleaner for surgical grade stainless steel, titanium steel, aluminum, copper and brass instruments. Instrument cleaner also conditions and lubricates metal-to-metal parts, reduces mineral deposits and prevents rust/corrosion. Intended for use in manual instrument cleaning systems, ultrasonic cleaners and washer/decontaminators.

PCNF050	5 Gallon Instrument Detergent w/spigot
PCNF128	1 Gallon Bottle Instrument Detergent w/1 oz pump, 4/cs
PCNF150	15 Gallon Drum Instrument Detergent
PCNF300	30 Gallon Drum Instrument Detergent
PCNF550	55 Gallon Drum Instrument Detergent



PREZ128



PREZU24

CERTOL PROEZ 2™ DUAL ENZYMATIC INSTRUMENT DETERGENT

ProEZ 2 is a low foaming, neutral pH, dual enzymatic detergent for cleaning medical and dental instruments. ProEZ 2 is especially useful for cleaning complex organic soils in box locks, serrations and endoscopes. May be used as a presoak or in manual, ultrasonic and automated cleaning systems.

PREZ050	5 gal Enzymatic Detergent w/spigot, 1/cs
PREZ128	1 gal Enzymatic Detergent, 4/cs
PREZ150	15 gal Drum Enzymatic Detergent
PREZ550	55 gal Drum Enzymatic Detergent
PREZU24	1 oz Unit Dose Tubes Enzymatic Detergent, Concentrate, 24/bx, 6 bx/cs



CERTOL PROEZ™ 1

An economical, low foaming single enzymatic detergent designed to effectively clean delicate instruments. Works fast to dissolve proteinaceous soils, speeding instrument turnaround in manual, ultrasonic or automated cleaning systems. Gentle to instruments. A neutral pH formula is non-corrosive and compatible with most metals, plastics and rubbers.

EZ050	5 Gallon Drum Enzymatic Detergent, 1/cs
EZ128	1 Gallon Enzymatic Detergent w/1 oz pump, 4/cs
EZ150	15 Gallon Drum Enzymatic Detergent, 1/cs



PREZF128



PREZF240

CERTOL PROEZ™ FOAM FOAMING ENZYMATIC SPRAY

Ready to use neutral pH, dual enzymatic, detergent foam spray starts cleaning process and keeps soils from drying on instruments. Protease and amylase enzymes dissolve complex soils; anti-corrosive system protects delicate instrumentation. Long lasting foam. Reduces spills and weight during transport. May be used in existing container/delivery systems.

PREZF128	1 Gallon Refill Bottle Detergent, 4/cs
PREZF240	24 oz Pump Spray Bottle Detergent, 15/cs



CHESTER ORGANISOL INSTRUMENT DETERGENT

Effectively cleans blood and tissue from surgical, dental, and postmortem instruments. It effectively cleans rubber and silk catheters, tubes, blood bank bottles, and laboratory glassware. Detergents will not rust instruments. Biodegradable. Spot-free air drying.

002700	Gallon, Liquid Instrument Detergent, 4/cs
002900	4 lb Bucket, Instrument Detergent Powder, 8/cs

Instrument Cleaning



J&J/ASP ENZOL® ENZYMATIC DETERGENT

A mild, low foaming enzymatic detergent. Starts to work in 1 minute at room temperature and has a pleasant mint fragrance.

- 2252 Gallons Enzymatic Detergent, 4/cs
2257 Fifteen Gallon Container Enzymatic Detergent

L&R GENERAL PURPOSE CLEANER CONCENTRATE SOLUTION

Removes blood, tissue, debris and other contaminants from instruments. Can also be used as a carrier bath for beakers and auxiliary pans. Concentrated.

- 228 General Purpose Cleaner, Non-Ammoniated, 4 gal/cs

L&R PREZYME ENZYMATIC CLEANER

Starts the infection control process the moment you place instruments in the solution. Immediately begins removing proteinaceous soils such as dried blood, mucous, debris and foreign matter. When used as part of PreClean Instrument Soak System, it plays an important part in maintaining proper asepsis. Multi-use formula can also be used as an ultrasonic cleaning solution or to clean evacuation systems. Safe for glass, metal and plastic.

- 242 PreZyme Enzymatic Cleaner, Concentrate, 4 gal/cs



METREX DETERGEZYME™ CLEANING SOLUTION

A neutral pH, non-corrosive 5% enzymatic presoak and cleaning solution. Designed to dissolve and remove proteinaceous matter such as blood, tissue, mucous or other body fluids that are commonly found on critical and semi-critical instruments.

- 10-4500 DetergeZyme Gallons, 4/cs



METREX EMPOWER™ DUAL ENZYMATIC DETERGENT

A dual-enzymatic detergent that effectively cleans away blood, tissue, mucous and other protein-rich body fluids. Contains two proteolytic enzymes. Safe for most instruments: Less corrosive than distilled water. Removes bioburden and water-soluble material such as composite and pumice. Works fast. Low-foaming formula is ideal for use in evacuation lines. Fresh scent.

- 10-4100 EmPower Gallons, 4/cs
10-4102 EmPower 2 oz, 48/cs
10-4115 EmPower 15 Gallon, 1/cs
10-4130 EmPower 30 Gallon, 1/cs
10-4150 EmPower 5 Gallon, 1/cs



METREX EMPOWER™ FOAM FOAMING ENZYMATIC SPRAY

A ready-to-use foaming dual enzymatic spray that starts the precleaning process chairside by breaking down blood, tissue, mucous and other protein-rich body fluids from instruments. Contains two proteolytic enzymes. Safe for most instruments: Less corrosive than distilled water. Breaks down bioburden and water-soluble materials. Presoaking prevents drying, speeding up the cleaning process. Ready to use in a convenient sprayer. Fresh scent.

- 10-4224 EmPower™ Foam Enzymatic Spray, 24 oz, 12/cs

Accessories

- 46-1510 Automated Touch-n-Spray Trigger, Battery Powered, 10/cs



METREX METRISPONGE® DUAL ENZYMATIC DETERGENT

A unique specially contoured sponge saturated with MetriZyme that simplifies the effective pre-cleaning of surgical instruments and endoscopes. Its unique shape enables thorough cleaning of cylindrical surfaces without scratching delicate surfaces.

- 10-4025 MetriSponge, 25/bx, 4 bx/cs



METREX METRIWASH™ INSTRUMENT DETERGENT CONCENTRATE

For manual and ultrasonic cleaning of surgical instruments. Neutral pH 7-8. No phosphates, chlorides, hydroxides. Biodegradable. Rinses freely. Non-corrosive.

- 10-3300 MetriWash Gallon, 4/cs
10-3315 MetriWash 15 Gallon
10-3330 MetriWash 30 Gallon
10-3350 MetriWash 5 Gallon



10-4000

10-4005

METREX METRIZYME® DUAL ENZYMATIC DETERGENT

A neutral pH, non-corrosive 12% dual enzymatic detergent designed to lift proteinaceous matter and bodily fluids from the surfaces of instruments, particularly lenses, lock boxes and channels. Assists in the process of disinfection/sterilization by enabling them to work on "clean" instruments. The protein-dissolving enzymes allows a fast, simple removal of body fluids that often cannot be accomplished manually with soaps or detergents. Non-corrosive and safe for use on medical and surgical equipment and has a pleasant mint fragrance.

10-4000	MetriZyme Gallon, 2/cs
10-4005	MetriZyme Quart, 4/cs
10-4010	MetriZyme 1/2 Gallon, 4/cs
10-4015	MetriZyme 15 Gallon
10-4030	MetriZyme 30 Gallon
10-4050	MetriZyme 5 Gallon
10-4055	MetriZyme 55 Gallon (special order)



3-750

3-755

MILTEX EZ-ZYME ENZYME CLEANER

3-750	Enzyme Cleaner
3-755	Enzyme Cleaner, 1 gallon pump bottles, 4/cs



SULTAN ZYMEX DUAL ENZYME

21380	Zymex Dual Enzyme, Gallon, 4/cs
21381	Zymex Dual Enzyme, 32 oz, 4/cs
21384	Zymex Dual Enzyme, Concentrate, Gallon, 4/cs
21390	Zymex Dual Enzyme, Concentrate, 5 Gallon
SUL 21380	Zymex Dual Enzyme, Gallon, 4/cs
SUL 21381	Zymex Dual Enzyme, 32 oz, 4/cs



3-800



3-1000



3-1001

MILTEX INSTRUMENT CARE SYSTEM KIT

A complete instrument care kit. Includes one each; spray lube, cleaner, stain remover, nylon and stainless steel bustle cleaning brushes, 25 min. video and instrument care leaflet.

3-800	Instrument Care Kit w/video
3-810	Instrument Care 25-minute Instructional Video

Accessories

3-1000	Non-Scratching Nylon Cleaning Brushes, 3/set
3-1001	Stainless Steel Cleaning Brushes For Rasps, Files & Burs (3 set)



3-720

3-725

3-726

MILTEX INSTRUMENT CLEANER

For surgical instruments, glassware, plastic, metal or rubber goods. pH neutral. Can be used in ultrasound cleaners or as a pre-soak. Phosphate-free formula. Free rinsing. One 8 ounce bottle makes 32 gallons of cleaning solution.

3-705	Instrument Lubricant, 1 Gallon
3-710	Lube & Cleaner, 1 Gallon
3-720	Instrument Cleaner, 12/cs
3-725	Surgical Instrument Cleaner, 1 gallon pump bottles
3-726	Surgical Instrument Cleaner, 1/4 oz packets, 80/bx



MILTEX INSTRUMENT PREP ENZYME FOAM

Ready to use foaming spray for pre-cleaning of soiled instruments and scopes. Ideal for applications where instrument cleaning is not immediately available. Simply spray on instruments until ready for cleaning. Prevents bio burden from drying onto instruments prior to initializing decontamination. Active enzymes work to breakdown blood, mucous and other bio burden for reduced cleaning time. No water dilution required and prevents spills and splashing during transport. Easy and safe to use on metals, plastic and rubber materials.

3-760	Instrument Prep Enzyme Foam, 24 oz spray bottles, 12/btl/cs
-------	---

Instrument Cleaning - Sharps Containers

MILTEX CLEANING BRUSHES

For trachea and laryngectomy tubes. Nylon bristles with stainless wire handles.

- 23-1600 Small Brush For Tube Sizes 2-5, Overall Length 6"
23-1602 Large Brush For Tube Sizes 6-12, Overall Length 8"



CERTOL PROLUBE LUBRICANT CONCENTRATE

An instrument lubricant designed for the lubrication cycle of automated instrument washer systems. It will easily penetrate hinges and jointed items. Helps prevent spotting, staining and rusting. Steam and ETO permeable. Contains anti-corrosive agents and a powerful rust inhibitor to ensure instruments remain rust free. Safe for use with all surgical grade instruments.

- PLC050 Instrument Lubricant Concentrate, 5 gal Bottle w/spigot, ea
PLC128 Instrument Lubricant Concentrate, 1 gal Bottle w/1 oz. pump, 4/cs
PLC150 Instrument Lubricant Concentrate, 15 gal Drum, ea
PLC300 Instrument Lubricant Concentrate, 30 gal Drum, ea
PLC550 Instrument Lubricant Concentrate, 55 gal Drum, ea

ESI INSTRUMENT LUBRICANT

All natural corrosion inhibitor/lubricant intended to lubricate and protect hinged surgical instruments. Contains an anticorrosive agent to protect against pitting and rusting.

- 2000980 Instrument Lubricant, Gallon, 4/cs
2000990 Instrument Lubricant, 5 Gallon
2000995 Instrument Lubricant, 15 Gallon



MILTEX SPRAY LUBE

Lubricates instrument box locks, screw locks, scissor blades or any moving parts after cleaning and before autoclaving. Preserves life of instruments with a water soluble, steam permeable, non-greasy and anti-corrosive formula. Pre-mixed.

- 3-700 8 oz Pump Spray Lube, 12/cs



BURNISHINE INSTRUMENT LUBRICANT

Non-silicone and non-toxic lubricant. Compatible with all sterilization methods.

- T2 Gallon Instrument Lubricant, 4/cs
T215 Instrument Lubricant, 15 gal (INTERNAL USE ONLY)
T25 Instrument Lubricant, 5 gal (INTERNAL USE ONLY)



10-3400

10-3425

METREX METRILUBE™ INSTRUMENT LUBRICANT

A concentrated instrument lubricant that helps prevent spotting, staining, rusting, and freezing up of instruments. Extends life of instruments. Anticorrosive, non-greasy, silicone-free, oil based.

- 10-3400 MetriLube Gallon, 4/cs
10-3415 MetriLube 15 Gallon
10-3425 MetriLube 24 oz Spray Bottle, (Ready to use), 12/cs
10-3430 MetriLube 30 Gallon
10-3450 MetriLube 5 Gallon



CERTOL PROLUBE LUBRICANT READY TO USE

A ready to use instrument lubricant spray. It will easily penetrate difficult to reach hinges and metal-to-metal surfaces and help prevent spotting, staining, and rusting. Steam and ETO permeable and contains anti-corrosive agents and a powerful rust inhibitor. Safe for use with all surgical grade instruments. Eliminates the messy "milk bath". It is quickly applied by spraying on instruments after cleaning/rinsing and before sterilization.

- PLR32 Instrument Lubricant Ready to Use, 32 oz. Pump Spray Bottle, 15/cs



BD CHEMOTHERAPY SHARPS COLLECTORS

Angled neck available for easier accessibility in laminar flow hoods. Re-sealable plug cap reduces evaporation and splashing. Attached locking lid and handles for safe transport. Durable, puncture-resistant polypropylene construction.

- 305492 Sharps Collector, 3 Gal, Plug Cap, Yellow (not autoclavable), 12/cs
305493 Sharps Collector, 5 Gal, Plug Cap, Yellow (not autoclavable), 8/cs
305603 Sharps Collector, 9 Gal, Yellow Hinged Top, Yellow (not autoclavable), 8/cs
305604 Sharps Collector, 9 Gal, Slide Top Gasketed, Yellow (not autoclavable), 8/cs
305613 Sharps Collector, 19 Gal, Slide Top Gasketed, Yellow (not autoclavable), 5/cs
305614 Sharps Collector, 17 Gal, Hinged Top Gasketed, Yellow (not autoclavable), 5/cs



BD EXTRA LARGE SHARPS COLLECTORS

305601	Sharps Collector, 9 Gal, Hinged Top Gasketed, Red, 8/cs
305602	Sharps Collector, 9 Gal, Slide Top Gasketed, Red, 8/cs
305609	Sharps Collector, 19 Gal, Slide Top, Red, 5/cs
305610	Sharps Collector, 17 Gal, Hinged Top, Red, 5/cs
305615	Sharps Collector, 9 Gal, Hinged Top, Red, 8/cs
305616	Sharps Collector, 9 Gal, Slide Top, Red, 8/cs
305665	Sharps Collector, 17 Gal, Hinged Top Gasketed, Red, 5/cs
305666	Sharps Collector, 19 Gal, Slide Top Gasketed, Red, 5/cs



BD MULTI-USE NESTABLE SHARPS COLLECTORS

With an exclusive funnel-shaped opening and safety neck, these are nestable for easy storage. They allow point-first drop and reduce the risk of tampering and spilling.

305417	Sharps Collector, 8 Qt, Clear Top, Open Cap, 24/cs
305456	Sharps Collector, 14 Qt, Clear Top, Large Open Cap, Red, 20/cs
305457	Sharps Collector, 6 Gal, Open, Clear Top, Large Open Cap, 12/cs
305460	Sharps Collector, 8 Qt, Clear Top, Funnel Cap, Red, 24/cs
305463	Sharps Collector, 8 Qt, Clear Top, Funnel Cap, Pearl, 24/cs
305464	Sharps Collector, 14 Qt, Clear Top, Funnel Cap, 20/cs
305465	Sharps Collector, 6 Gal, Clear Top, Large Funnel Cap, 12/cs
305480	Sharps Collector, 14 Qt, Large Funnel Cap, Clear Top, 20/cs
305466	Sharps Collector, 14 Qt, Clear Top, Small Open Cap, 20/cs



BD MULTI-USE ONE-PIECE SHARPS COLLECTORS

Convenient, vertical point first drop, these collectors are preassembled and offer a patented one-way funnel valve to help prevent needlesticks and overfilling. Red.

300467	Sharps Collector, 6.9 Qt, Medium, Non-Vented Cap, 12/cs
300470	Sharps Collector, 8.2 Qt, Large, Non-Vented Cap, 12/cs
300473	Sharps Collector, 5 Gal, X-Large, Open Top, Non-Vented Cap, 8/cs
305477	Sharps Collector, 5 Gal, X-Large, Large Funnel, 8/cs
305488	Sharps Collector, 3.3 Qt, Small, Red, 24/cs
305489	Sharps Collector, 6.9 Qt, Medium, Red, 12/cs
305490	Sharps Collector, 8.2 Qt, Large, Red, 12/cs
305491	Sharps Collector, 5 Gal, X-Large, Open Top, 8/cs
305557	Sharps Collector, 1.4 Qt, Small, Red, 36/cs



BD PATIENT ROOM SHARPS COLLECTORS

One hand, one step technique. Features a counter-balanced door/horizontal drop design, providing more capacity to the fill line. Glove box cabinet attaches to bottom of locking wall bracket, holds/dispenses from most exam glove cartons.

305422	Sharps Collector, 2 & 3 Gallon, Next Generation, Counter Balanced Door, Pearl, 10/cs
305423	Sharps Collector, 2 & 3 Gallon, Next Generation, Counter Balanced Door, Pearl, 10/cs
305425	Sharps Collector, 5.4 Qt, Side Entry, Counter Balanced Door, Pearl, 12/cs
305426	Sharps Collector, 5.4 Qt, Next Generation, Counter Balanced Door, Red, 12/cs
305427	Sharps Collector, 5.4 Qt, Next Generation, Counter Balanced Door, Clear, 12/cs
305428	Sharps Collector, 5.4 Qt, Next Generation, Counter Balanced Door, Pearl, 12/cs
305435	Sharps Collector, 2 & 3 Gallon, Next Generation, Counter Balanced Door, Red, 10/cs
305436	Sharps Collector, 2 & 3 Gallon, Next Generation, Counter Balanced Door, Red, 10/cs
305443	Sharps Collector, 5.4 Qt, Side Entry, Counter Balanced Door, Red, 20/cs
305444	Sharps Collector, 5.4 Qt, Side Entry, Counter Balanced Door, Pearl, 20/cs
305517	Sharps Collector, 5.4 Qt, Next Generation, Counter Balanced Door, Red, 20/cs
305543	Sharps Collector, 5.4 Qt, Next Generation, Counter Balanced Door, Pearl, 20/cs
305550	Wallmate™ Includes: 5.4 Qt Sharps Collector, Locking Bracket & Glove Box Holder
305551	Sharps Collector, 5.4 qt, Next Generation, Counter Balanced Door, Clear, 20/cs



BD PHLEBOTOMY SHARPS COLLECTORS

305487	Sharps Collector, 1.5 Qt, Phlebotomy, Red, 36/cs
305635	Sharps Collector, 1.0 Qt, Phlebotomy, Red, 60/cs

**Fast, easy access to
the products you need.**

Sharps Containers



BD SHARPS COLLECTOR ACCESSORIES

305017	5.4 qt Locking Wall Cabinet w/shield
305020	5.4 Qt Small Cabinet Shields, 10/cs
305409	2 & 3 gal Locking Wall Bracket, 10/cs
305420	2 & 3 gal Locking Wall Cabinet
305447	Locking Wall Bracket For 5.4 qt Collector, 10/cs
305448	Glove Box Cabinet, 6/cs
305451	Bracket For 1 Piece Collectors, 12/cs
305485	Site-of-Use Mounting Bracket For Collector, 12/cs
305494	Security Lock, 12/cs
305495	Bracket For 5 gal, 12/cs
305496	Brackets For 6.9 - 9.2 Qt, 12/cs
305497	Quick Release Strap Bracket For 3.3qt Thru 5 gal Collector, 12/cs
305552	Stabilizer, 2 & 3 gal, 5/cs
305569	Wallmate Cabinet Kit: Cabinet (305017), 5.4qt Next Generation Collector & Mounting Hardware.
305570	Stabilizer, 8 Qt, 5/cs
305588	Wall/Cart, 2 & 3 gal, 6/cs
305589	Wall/Cart, 8 Qt, 4/cs



BD SHARPS COLLECTOR TROLLEYS

305556	9 gal Basic Trolley, Hinge or Slide
305567	9 gal Foot Operated Trolley, Slide
305611	17 & 19 gal Basic Trolley
305612	19 gal Foot Operated Trolley



BEMIS CHEMOTHERAPY CONTAINERS

Puncture and leak resistant containment for chemotherapy waste. For use in oncology units and pharmacy. Available in yellow and white.

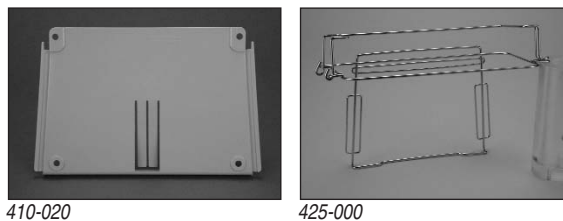
202-004	2 Gallon Chemo Container, White, 30/cs
202-040	2 Gallon Chemo Container, White, 30/cs
208-004	8 Gallon Chemo Container, White, 10/cs
208-040	8 Gallon Chemo Container, Yellow, 10/cs
211-004	11 Gallon Chemo Container, White, 6/cs
211-040	11 Gallon Chemo Container, Yellow, 6/cs

BEMIS WALL CABINETS FOR SHARPS CONTAINERS

1031	3 Gallon Beige Wall Cabinet For Container Model 333
1041	Beige Glove Box Holder For Cabinet
1051	5 Qt Beige Wall Cabinet For Container Model 175

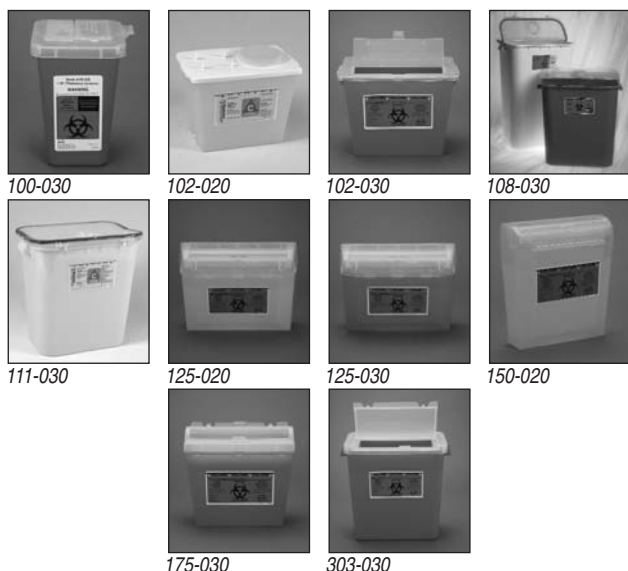
Accessories

1060	Shelf to convert 3 Gallon Cabinet to 5 Qt, 12/cs
------	--



BEMIS SHARPS CONTAINER ACCESSORIES

400-000	Phlebotomy Holder, Natural, 20/cs
410-020	Wall Safe® Bracket, Beige, 10/cs
415-020	Wall Safe® Key, Beige, 10/cs
423-000	Nonlocking Wire Bracket For 3 Gallon Sharps Container, 5/cs
425-000	Locking Wire Bracket For 3 Gallon Sharps Container, 5/cs
426-000	Lock & Key For 425 Bracket
430-030	Rolling Cart For 8 & 11 Gallon Sharps Container
435-020	Wall Bracket For 5 Qt Sharps Sentinel & 2 Gallon Container, Beige, 10/cs
440-020	Key For 435020 Wall Bracket, Beige, 10/cs



BEMIS SHARPS CONTAINERS

Available in a variety of sizes and configurations for use in all areas of a facility. Most have translucent lids and bases. Latex and heavy-metal free.

100-030	Phlebotomy Container, 1 Quart, Translucent Red, 100/cs
102-020	2 Gallon Sharps Container, Translucent Beige, 30/cs
102-030	2 Gallon Sharps Container, Translucent Red, 30/cs
108-030	8 Gallon Sharps Container, Dual Purpose Lid, Red, 10/cs
111-030	11 Gallon Sharps Container, Dual Purpose Lid, Red, 6/cs
125-020	Wall Safe® 3-Qt. Sharps Container, Translucent Beige, Rotating Lid, 24/cs
125-030	Wall Safe® 3-Qt. Sharps Container, Translucent Red, Rotating Lid, 24/cs
150-020	Wall Safe® 5-Qt. Sharps Container, Translucent Beige, Rotating Lid, 24/cs
150-030	Wall Safe® 5-Qt. Sharps Container, Translucent Red, Rotating Lid, 24/cs
175-020	SharpSentinel™, 5-Qt. Sharps Container, Translucent Beige, Rotating Lid, 32/cs
175-030	SharpSentinel™, 5-Qt. Sharps Container, Translucent Red, Rotating Lid, 32/cs
303-020	3 Gallon Sharps Container, Large Opening Lid, Translucent Beige, 12/cs
303-030	3 Gallon Sharps Container, Large Opening Lid, Translucent Red, 12/cs
333-020	3 Gallon Sharps Container, Rotating Lid, Translucent Beige, 12/cs
333-030	3 Gallon Sharps Container, Rotating Lid, Translucent Red, 12/cs

Personal Attention Local Service



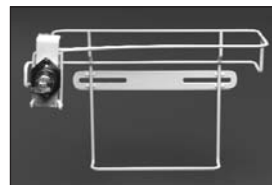
85161H

8550LG

COVIDIEN/KENDALL IN-ROOM SYSTEM WALL ENCLOSURES & GLOVE BOXES

Sturdy, locked sharps container mounting allows for secure point of use disposal of sharps. For convenience, all cabinets are universally keyed. Sturdy, durable, long lasting ABS plastic provides a secondary barrier of protection. Easily monitored fill level through viewing windows on front and sides. Keep gloves readily available with optional glove dispenser. Beige, unobtrusive style fits any room décor.

85161H	Wall Enclosure For 5qt Container, 1/cs
85165H	5qt Enclosure w/window, 5/cs
8516HDL	85161H Replacement Door w/window & lock, 1/cs
85301H	3 gal, Enclosure w/window, 1/cs
85401H	3 & 4 gal, Low Profile Wall Enclosure, 1/cs
8546	Glove Box Prevention Adapter, 5/cs
8550B	Glove Boxes w/brackets, 5/cs
8550LG	Glove Dispenser, Top Loading, Attaches to 5 & 12 qt Wall Enclosures, 6.75"H x 4.5"D x 12"W, 10/cs
8554B	Double-Up Wall Bracket, 5/cs
8555SA	Multi-Glove Dispenser, Opaque Beige, 10/cs



COVIDIEN/KENDALL BRACKETS, HOLDERS, AND ACCESSORIES

Locking wall brackets are unobtrusive and securely hold container in place. All brackets are keyed alike for your convenience.

8518X	Locking Bracket for 2 & 5 qt IN-ROOM Containers, 8.25"H x 6.5"D x 11.25"W, 5/cs
8524C	Non-Locking Bracket for 12qt, Multi-Purpose & 8 & 12qt In-Room Containers, 11.75"H x 6.5"D x 13.75"W, 5/cs
8529	Holder for 12qt Multi-Purpose SharpStar & In-Room Containers, 2.5"H x 6.5"D x 13"W, 5/cs
8974	Holder For 8 Qt. Phlebotomy, Multi-Purpose & Chemosafety Containers, 3.25"H x 7.75"D x 11"W, 5/cs
8975	Wall/Cart Bracket for 8qt Multi-Purpose & Chemosafety Containers, 7.5" H x 6.5" D x 10" W, 5/cs



COVIDIEN/KENDALL LARGE VOLUME SHARPS CONTAINERS

Designed for the convenient disposal of large instruments and high volumes. Gasketed containers for spill resistance. Clear lid keeps contents and fill level visible for increased safety. Convenient molded carrying handles to aid in lifting heavy, filled containers for final disposal.

31143665	10 gal, Red, Split Lid, Sharps Port, Large volume, 15.5"H x 12"D x 21.5"W, 6/cs
31156550	7 Gal, Red, Split Lid, Sharps Port, Large Volume, 14"H x 12"D x 15.5"W 10/cs

Sharps Containers



COVIDIEN/KENDALL TORTUOUS PATH SHARPS CONTAINERS

One-hand, one-step, no-touch sharps depositing. Horizontal loading, non-mechanical sharps opening. Tortuous-path design impedes hand entry. Clear top standard, translucent bases offered. Plastics and pigments are safe to incinerate.

- 31143723 5qt, Translucent Almond, Tortuous Path Sharps Container, 12.25"H x 4.25"D x 11"W, 30/cs
- 31143897 5qt, Clear, Tortuous Path Sharps Container, 12.25"H x 4.25"D x 11"W, 30/cs
- 31143921 2.5qt, Almond, Tortuous Path Sharps Container, 7.5"H x 4.25"D x 11"W, 30/cs
- 31144010 5qt, Translucent Red, Tortuous Path Sharps Container, 30/cs
- 31144085 2.5qt, Red, Tortuous Path Sharps Container, 7.5"H x 4.25"D x 11"W, 30/cs
- 31144093 3.5 gal, Translucent Almond, Tortuous Path Sharps Container, 13.5"H x 8"D x 14.25"W, 10/cs
- 31176871 3.5 gal, Translucent Red, Tortuous Path Sharps Container, 13.5"H x 8"D x 14.25"W, 10/cs



COVIDIEN/KENDALL IN-ROOM CONTAINERS WITH ALWAYS-OPEN LIDS

Always-open lids provide convenient, quick and easy point-of-use sharps disposal. Accommodates larger syringes. Economical horizontal drop maximizes container volume. Containers easily lock for final disposal. Wall enclosures, brackets and adhesive-backed holders are available. 8.5" wide opening will accept up to 60cc syringe.

- 850201 2qt, Clear, Sharps Container, Always-Open Lid, 6.25"H x 4.75"D x 10.75"W, 20/cs
- 850301 2qt, Transparent Red, Sharps Container, Always-Open Lid, 6.25"H x 4.75"D x 10.75"W, 20/cs
- 851201 5qt, Clear, Sharps Container, Always-Open Lid, 11"H x 4.75"D x 10.75"W, 20/cs
- 851301 5qt, Transparent Red, Sharps Container, Always-Open Lid, 11"H x 4.75"D x 10.75"W, 20/cs
- 85221 12qt, Clear, Sharps Container, Always-Open Lid, 16.25"H x 6"D x 13.75"W, 10/cs
- 85221R 12qt, Transparent Red, Sharps Container, Always-Open Lid, 16.25"H x 6"D x 13.75"W, 10/cs
- 85321 8qt, Clear, Sharps Container, Always-Open Lid, 11.5"H x 6"D x 13.75"W, 10/cs
- 85321R 8qt, Transparent Red, Sharps Container, Always-Open Lid, 11.5"H x 6"D x 13.75"W, 10/cs



COVIDIEN/KENDALL LARGE VOLUME CONTAINERS

Lids can provide temporary closure when container is not in use to reduce exposure to contents. Easy, simple assembly. Containers lock for final disposal. Nestable containers save valuable storage space.

- 8930SA Biomax Perfusion Waste Container, 3/cs
- 8932 12 gal Red, Biomax, Gasketed Hinged Lid, 10/cs
- 8933 12 gal, Large Volume Red Container w/hinged lid, 18.75"H x 12.75"D x 18.25"W, 10/cs
- 8935 12 gal Red, Slide Lid, 10/cs
- 8936SA 12 gal Red, Biomax, Gasketed Slide Lid, 10/cs
- 8938 18 gal, Large Volume Red Container w/sliding lid, 26"H x 12.75"D x 18.25"W, 5/cs
- 8980 8 gal Red Container w/hinged lid, 10/cs
- 8980S 8 gal Red, Slide Lid, 10/cs
- 8991 18 gal Red, Hinged Lid, 5/cs
- 8997 8 gal Red, Biomax, Hinged Lid, 10/cs
- 8997S 8 gal Red, Biomax, Slide Lid, 10/cs
- 8998 18 gal Red, Biomax, Gasketed Hinged Lid, 5/cs
- 8998S 18 gal Red, Biomax, Gasketed Slide Lid, 5/cs



8881676236



8881676285



8881676434

COVIDIEN/KENDALL MONOJECT SHARPS CONTAINERS

Polished viewing windows on four sides. Translucent colors. Clear lid with extra-wide butterfly closure. Needle removal notches. Can be autoclaved or incinerated.

- 8881676236 4qt Chimney-Top Sharps Container, Red, Small, 40/cs
- 8881676285 8qt Chimney-Top Container, Red, Medium, 20/cs
- 8881676434 14qt Chimney-Top Container, Red, Large, 10/cs
- 8881676814 4qt Horizontal-Entry Sharps Container, Red, Small, 6.75"W x 10.56"L x 5.64"H, 30/cs
- 8881676822 8qt Horizontal-Entry Sharps Container, Red, Medium, 6.75"W x 10.56"L x 9.45"H, 20/cs

Accessories

- 8881676012 Aluminum Bracket, 10/cs
- 8881676624 Locking Wall Cabinet, Beige, 2/cs
- 8881676632 Glove Box, Beige, 2/cs



8527R



8970

COVIDIEN/KENDALL MULTI-PURPOSE SHARPS CONTAINERS

Adjustable rotor opening or hinged lids accommodate a variety of sharps sizes and provide temporary and permanent closure. Easy, simple assembly. Containers lock for final disposal. Nestable containers save valuable storage space. Available holders and brackets secure containers wherever needed. Plastics and pigments are safe to autoclave or incinerate.

- 8527 3 gal, Multi-Purpose, Clear Container w/hinged rotor lid, 13.75"H x 6"D x 13.75"W, 10/cs
- 8527R 3 gal, Multi-Purpose, Red Container w/hinged rotor lid, 13.75"H x 6"D x 13.75"W, 10/cs
- 8535SA 2 gal, Multi-Purpose, Clear Container w/hinged rotor lid, 10"H x 7.25"D x 10.5"W, 20/cs
- 8920SA 0.5 gal Needle Syringe Collection Container w/rotor opening lid, 4.5"H x 4.75"W, 60/cs
- 8950SA 5qt, Multi-Purpose Red Container w/rotor opening lid, 6.75"H x 8.75"D, 40/cs
- 8970 2 gal Red Container w/rotor opening lid, 20/cs
- 8979C 2 gal, Multi-purpose Clear Container w/rotor lid, 10"H x 7.25"D x 10.5"W, 20/cs
- 8990SA 2 gal Multi-Purpose Red Container w/clear, Hinged Lid, 10"H x 7.25"D x 10.5"W, 20/cs
- 8996 2 gal Multi-Purpose Red Container w/hinged, Sealing Gasket Lid, 10"H x 7.25"D x 10.5"W, 20/cs

COVIDIEN/KENDALL PHLEBOTOMY SHARPS CONTAINER

Adapts to present blood drawing trays and techniques, including the AUTODROP Blood Needle Holder System. Available holders and brackets. Facilitates the disconnection of multi-sample needles from needle holders. Containers lock for final disposal.

- 31143657 1qt Container, Red, 80/cs



1522SA



8900SA

COVIDIEN/KENDALL PHLEBOTOMY SHARPS CONTAINERS

Adapts to present blood drawing trays and techniques, including the AutoDrop Blood Needle Holder System (1510SA). Available holders and brackets. Facilitates the disconnection of multi-sample needles from needle holders. A variety of container sizes and openings allow for disposal of other sharps, lancets, butterfly tubing and small syringes. Containers lock for final disposal.

- 1522SA 2.2 qt Sharps Container, Red, 60/cs
- 1525SA 8 qt Sharps Container, Red, 20/cs
- 8900SA 1qt Sharps Container, Red, 100/cs
- 8901SA 1/2 qt Sharps Container Autodrop, Red, 100/cs
- 8905 1qt Sharps Container, Rainbow, 100/cs



COVIDIEN/KENDALL SHARPSTAR IN-ROOM CONTAINERS

Minimizes the potential for overfilling by stopping in the FULL position when it reaches maximum capacity. Unique lid design limits accidental or intentional access to container contents for pediatric, geriatric or high-risk areas. Allows for visual monitoring. Economical forced horizontal drop maximized container volume.

- 8556H SharpStar Container (8507SA) w/wall enclosure & Glove Dispenser, 1/cs



COVIDIEN/KENDALL SHARPSTAR IN-ROOM SYSTEM WITH SHARPSTAR LIDS

Minimizes the potential for overfilling by stopping in the full position when it reaches maximum capacity. Unique lid design limits accidental or intentional access to container contents for pediatric, geriatric or high-risk areas. Allows for visual monitoring. Economical forced horizontal drop maximizes container volume.

- 8506SA 5qt Clear Sharpstar, Counter Balanced Lid, 20/cs
- 8507MW 5 Qt, Clear, Sharps Container w/counter-balanced lid, 11"H x 4.75"D x 10.75"W, 20/cs
- 8507SA 5qt, Transparent Red, IN-ROOM Sharps Container w/SHARPSTAR Lid & Counter-Balanced Door, 12.5"H x 5.5"D x 10.75"W, 20/cs
- 8509AC 5qt AC Red Sharpstar, 5/cs
- 8533SA 2 gal, Clear Sharpstar, Counter Balanced Lid, 10/cs
- 8534SA 2 gal, Red Sharpstar, Counter Balanced Lid, 10/cs
- 8536SA 12qt, Clear, IN-ROOM Sharps Container w/SHARPSTAR Lid & Counter-Balanced Door, 16"H x 6"D x 13.75"W, 10/cs
- 8537SA 3 gal, Red Sharpstar, Counter Balanced Lid, 10/cs

MEDICAL ACTION CHEMOTHERAPY SHARPS CONTAINERS

Chemo-tainers™ provide safe, efficient means to dispose of hazardous sharp items. Color-coded white with black print on yellow "Chemotherapy Waste" labels. Locking cap. Larger sizes are stackable with white translucent top. To reduce fumes from liquid spills Chemo-Sorb™ powder can be used in these containers.

- 930 Sharps Containers, Non-Stackable, Chemotherapy Waste Containment, Polypropylene, White, 20/cs
- 931W 2.5 Gallon Sharps Container, 152 mm Opening, 12/cs
- 932 5.75 Gallon Sharps Container, 152 mm Opening, 4/cs
- 936 Chemo-Sorb Powder, 144 pk/cs
- 9751 8 Gallon Sharps Container, Stackable, 10/cs
- 9752 16 Gallon Sharps Container, Stackable, 6/cs

Sharps Containers



MEDICAL ACTION STACKABLE SHARPS-CONTAINER SYSTEM

Disposal container with translucent top. Contents are always safely enclosed with locking door. Autoclavable polypropylene construction. Built-in phlebotomy needle port. Free-standing or optional wall mounting brackets. Optional cart available.

8702	1 Quart Red Sharps Container, 3 1/2" W x 3 1/2" D x 7" H, 72/cs
8702T	1 Quart Translucent Red Sharps Container, 3 1/2" W x 3 1/2" D x 7" H, 72/cs
8703	1 Gallon Red Sharps Container, 10" W x 7" D x 5" H, 24/cs
8703T	1 Gallon Translucent Red Sharps Container, 10" W x 7" D x 5" H, 24/cs
8704	2 Gallon Red Sharps Container, 10" W x 7" D x 9 1/2" H, 24/cs
8704T	2 Gallon Translucent Red Sharps Container, 10" W x 7" D x 9 1/2" H, 24/cs
8705	8 Gallon Sharps Container, Red, 13 3/4" W x 13 3/4" D x 14" H, 10/cs
8705T	8 Gallon Sharps Container, Translucent Red, 13 3/4" W x 13 3/4" D x 14" H, 10/cs
8706	1 Gallon Red Sharps Container, Tortuous Path Lid, 10" W x 7" D x 6 3/4" H, 12/cs
8706T	1 Gallon Translucent Red Sharps Container, Tortuous Path Lid, 10" W x 7" D x 6 3/4" H, 12/cs
8707	2 Gallon Red Sharps Container, Tortuous Path Lid, 10" W x 7" D x 11 1/4" H, 10/cs
8707T	2 Gallon Translucent Red Sharps Container, Tortuous Path Lid, 10" W x 7" D x 11 1/4" H, 10/cs
8716	16 Gallon Sharps Container, Red, 13 1/2" W x 13 1/2" D x 25 1/2" H, 6/cs

**Can't find what you
are looking for?
Give us a call for fast,
personal service.**



MEDICAL ACTION NON-STACKABLE SHARPS CONTAINERS - POLYPROPYLENE

158	Sharps-Tainers™, Short Tray Size w/needle remover, 3.5" x 3.5" x 5", 0.7 Qt, Red, Print Label: Biohazard, Biohazard Symbol, 40/cs
180	Sharps-Tainers™, Large Size, Locking Cap 10" x 6" x 15", 10 Qt, Red, Print Label: Biohazard, Biohazard Symbol, 12/cs
180S	Sharps-Tainers™, Large Size, Locking Screw Cap, 10" x 6" x 15", 10 Qt, Translucent, Print Label: Biohazard, Biohazard Symbol, 12/cs
182	Sharps-Tainers™, Medium Size, Locking Cap, 10" x 6" x 11", 6.2 Qt, Red, Print Label: Biohazard, Biohazard Symbol, 12/cs
182S	Sharps-Tainers™, Medium Size, Locking Screw Cap, 10" x 6" x 11", 6.2 Qt, Translucent, Print Label: Biohazard, Biohazard Symbol, 12/cs
184S	Sharps-Tainers™, Small Size, Locking Screw Cap, 10" x 6" x 9", 4.8 Qt, Translucent, Print Label: Biohazard, Biohazard Symbol, 12/cs
185S	Sharps-Tainers™, Short Tray Size, Locking Cap, 3.5" x 3.5" x 5", 0.7 Qt, Red, Print Label: Biohazard, Biohazard Symbol, 40/cs
186S	Sharps-Tainers™, Large Wide Opening, Locking Cap, 12" x 9" x 11", 12 Qt, Translucent, Print Label: Biohazard, Biohazard Symbol, 12/cs
186W	Sharps-Tainers™, Large Wide Opening, Locking Cap, 12" x 9" x 11", 12 Qt, Red, Print Label: Biohazard, Biohazard Symbol, 12/cs
187S	Sharps-Tainers™, Extra Large Wide Opening, Locking Cap, 12" x 9" x 18", 23 Qt, Translucent, Print Label: Biohazard, Biohazard Symbol, 4/cs
195	Sharps-Tainers™, Tall Tray Size, Locking Screw Cap, 5" x 4" x 10", 2 Qt, Translucent, Print Label: Biohazard, Biohazard Symbol, 20/cs
199	Sharps-Tainers™, Short Tray Size, Locking Screw Cap, 5" x 4" x 7.5", 1.3 Qt, Translucent, Print Label: Biohazard, Biohazard Symbol, 40/cs

PLASTI BIG MOUTH SHARPS CONTAINERS

Large screw cap closure with locking device. Puncture resistant molded plastic. Nested containers for compact storage. May be mounted to the wall using optional wall mounting bracket.

146008	8 Qt Red Big Mouth Container, 20/cs
146014	14 Qt Red Big Mouth Container, 10/cs

PLASTI HORIZONTAL ENTRY SHARPS CONTAINERS

The automatic rotating chamber is designed to safely deposit sharps into the puncture resistant container. If necessary, sharps can be dropped manually by using the actuating lever. Horizontal drop maximizes the use of the container. Puncture resistant molded plastic, translucent red color. Containers may be nested for compact storage. All sizes may be mounted to the wall using optional wall mounting bracket.

145004	4 Qt Red Horizontal Entry Container, 25/cs
145008	8 Qt Red Horizontal Entry Container, 20/cs
145014	14 Qt Red Horizontal Entry Container, 10/cs

Accessories

100020	Security Lock, 10/cs
147005	Wall Mounting Bracket, 5/cs



141020



142020



143002



144002

PLASTI WALL MOUNTED SHARPS DISPOSAL SYSTEM

The automatic rotating chamber is designed to safely deposit sharps into the puncture resistant container. If necessary, sharps can be dropped manually by using the actuating lever. Horizontal drop maximizes the use of the container. Nestable containers to minimize storage requirements. Meets U.S. Federal and State OSHA requirements.

141020	5 Qt. Container, Red, 10/bx, 2 bx/cs
142020	5 Qt. Container, Clear, 10/bx, 2 bx/cs
145002	Combo Pak, Includes: 1-5 qt Sharps Container (#141020), 1-Locking Wall Cabinet (#143002), & 1-Glove Box (#144002), 1/cs

Accessories

143002	Locking Wall Cabinet, 2/cs
144002	Glove Box, 2/cs

SMITHS MEDICAL SHARPS CONTAINERS WITH LIDS

Puncture resistant. Available with mounting brackets. FDA approved.

4015	Sharps Container 1 Qt. Phlebotomy, 100/cs
4016	Sharps Container 5 Qt., 32/cs
4017	Sharps Container 2 Gallon., 30/cs
4019	Sharps Container 3 Gallon., 12/cs
4020	Sharps Container 8 Gallon., 10/cs
4021	Sharps Container 11 Gallon., 6/cs



MYCO MEDICAL CLICKSMART BLADE REMOVAL SYSTEM

Safe, quick and easy to use. Single-handed use keeping hands out of harms way. Self-contained waste disposal system. Use with blades from handles #3, 4, 5, 7 and 9. Blade fully contained upon removal, eliminating injuries to downstream staff. Sealed, spill-proof, puncture resistant container eliminates the concern of contamination. Reliable shut-off mechanism (when full) eliminates jamming or mechanism failure due to overfilling. 100 blade capacity, each device, every time. Sturdy container, will not break or spill contents. The device is manufactured using puncture resistant materials, ABS (acrylonitrile butadiene styrene), also environmentally friendly. New stronger stainless steel mechanism inside. Manufactured to exacting quality control standards - ISO9002 and ISO9000.

QFRGEN	Blade Removal System
--------	----------------------

Accessories

QBRGEN	Universal Bracket
--------	-------------------



PRO ADVANTAGE® SELF SEAL STERILIZATION POUCHES

Featuring dual steam and EtO process indicator arrows that change color after processing. Pouches after medical grade paper and blue tinted transparent film. Triple sealed edges prevent separation or tearing.

P012790	2 3/4" x 9" Pouch, 200/bx, 20 bx/cs
P013554	3 1/2" x 5 1/4" Pouch, 200/bx, 10 bx/cs
P013590	3 1/2" x 9" Pouch, 200/bx, 20 bx/cs
P015410	5 1/4" x 10" Pouch, 200/bx, 10 bx/cs
P017513	7 1/2" x 13" Pouch, 200/bx, 5 bx/cs

3M™ STERI-LOK™ PEEL OPEN BREATHABLE PACKAGES

Packaging for ethylene oxide sterilization that provides a breathable barrier which allows sterilant to permeate during the sterilization process while prohibiting microbial penetration during handling and storage after sterilization.

8501	3 1/8" x 7 7/8" Peel Open Breathable Packages, 250/bx, 4 bx/cs
8502	3 7/8" x 9 3/4" Peel Open Breathable Packages, 250/bx, 4 bx/cs
8503	5 7/8" x 9 3/4" Peel Open Breathable Packages, 250/bx, 4 bx/cs
8504	3 1/8" x 7 7/8" Peel Open Breathable Packages, 250/bx, 4 bx/cs
8505	7" x 13" Peel Open Breathable Packages, 250/bx, 2 bx/cs
8506	11 3/4" x 14 7/8" Peel Open Breathable Packages, 250/bx, 2 bx/cs
8507	15 3/4" x 18" Peel Open Breathable Packages, 250/bx, 2 bx/cs



3M™ STERI-LOK™ POLYETHYLENE BAGS

Provides a breathable barrier which allows ethylene oxide to permeate during the sterilization process while prohibiting microbial penetration during handling and storage after sterilization. Made with 2 mil polyethylene. Contains an anti-static agent for easier handling. Provides effective dust cover for previously sterilized items.

8252	Polyethylene Bags, 9" x 17", 100/pk, 5 pk/cs
8253	Polyethylene Bags, 12" x 15", 100/pk, 5 pk/cs
8254	Polyethylene Bags, 15" x 23", 100/pk, 5 pk/cs
8255	Polyethylene Bags, 20" x 30", 100/pk, 5 pk/cs



CERTOL PROPAC® NYLON STERILIZATION FILM TUBING

Clear nylon tubing provides sterilization packaging for use in steam and dry heat processes. Continuous roll is 100' length. Sturdy nylon film is puncture resistant at .16 mils thickness. Imprinted chemical ink indicator.

SFR021	2" x 100' Film Tubing, 12/cs
SFR031	3" x 100' Film Tubing, 12/cs
SFR061	6" x 100' Film Tubing, 6/cs

Sterilization Pouches

CROSSTEX SANI-TUBE® NYLON TUBING

Manufactured from clear, puncture resistant, 1.5ml nylon. Easily sealed with a heat sealer or process indicator tape, Sani-Tubes are an economical and convenient way to package items for sterilization. Can be used in steam, chemical vapor or dry heat (up to 425°F/ 218°C). Available with or without process indicators. Made in USA

SI2	2" Tubing w/process indicators, 100' roll, 16 rl/cs
SI3	3" Tubing w/process indicators, 100' roll, 12 rl/cs
SI4	4" Tubing w/process indicators, 100' roll, 12 rl/cs
SI6	6" Tubing w/process indicators, 100' roll, 12 rl/cs
SN2	2" Tubing, 100' roll, 16 rl/cs
SN3	3" Tubing, 100' roll, 12 rl/cs
SN4	4" Tubing, 100' roll, 12 rl/cs
SN6	6" Tubing, 100' roll, 12 rl/cs

CROSSTEX SANI-ROLL® STERILIZATION TUBING

An economical, convenient way to package instruments, swabs and other items for sterilization. Sani-Rolls have easy to read color process indicators to signal exposure to sterilization conditions. Blue tinted plastic aids in the detection of puncture holes caused by pointed/sharp instruments. Available in 4 convenient widths, use only the width and length required. For use in steam, chemical vapor and EtO sterilizers. Made in USA

SCT2	2" Tubing, Paper/Plastic, 100' roll, 16 rl/cs
SCT3	3" Tubing, Paper/Plastic, 100' roll, 12 rl/cs
SCT4	4" Tubing, Paper/Plastic, 100' roll, 12 rl/cs
SCT6	6" Tubing, Paper/Plastic, 100' roll, 12 rl/cs



PM1016



PM2790

CERTOL PROVUE® PLUS SELF SEAL STERILIZATION POUCHES

Self-sealing sterilization packaging. Compatible with steam, chemical vapor and EtO processes. Medical grade components. Features allow aseptic presentation for surgical procedures.

PM1016	10" x 16", 200/bx, 1 bx/cs
PM1217	12" x 17" Cassette Pouch, 200/bx, 1 bx/cs
PM1318	13" x 18" Cassette Pouch, 200/bx, 1 bx/cs
PM2440	Bur Pouch, 2 1/4" x 4", 200/bx, 12 bx/cs
PM2790	2 3/4" x 9", 200/bx, 6 bx/cs
PM3554	3 1/2" x 5 1/4" Cassette Pouch, 200/bx, 6 bx/cs
PM3590	3 1/2" x 9" Cassette Pouch, 200/bx, 6 bx/cs
PM5410	5 1/4" x 10" Cassette Pouch, 200/bx, 6 bx/cs
PM7513	7 1/2" x 13" Cassette Pouch, 200/bx, 6 bx/cs

MEDICAL ACTION SAF-T-SEAL® PLUS SELF-SEAL & HEAT-SEAL POUCHES

Patented internal steam and gas indicators are isolated and completely protected by a tough, chevron seal. Instruments can't come in contact with them and cause a false reading. When the indicators turn color, you're assured that heat or gas has fully penetrated the inside of the pouch. Constructed with premium quality materials, clear, maximum fracture resistant film. Surgical grade paper. Solid protection side seals. Convenient adhesive tabs.

255-	12" x 15" Heat-Seal Pouches, 1000/cs
565	3.5" x 22" Self Seal Pouches, 1000/cs

There's "almost sure" and then there's **Sure-Check®!**

Internal/External indicators change color to let you know that all criteria for sterility have been met.

Sterility Criteria	Assure Plus™ and Peel Vue+	Crosstex Sure-Check®
Time	X NO	✓ YES
Presence of Steam	X NO	✓ YES
Temperature	✓ YES	✓ YES

Only Crosstex® Sure-Check Sterilization Pouches react to the 3 criteria for sterilization—time, temperature and presence of steam!*

Don't just take our word for it. Request your **Free** sample and see for yourself! Visit www.crosstex.com.

* Patent pending. Test data available upon request. Sure-Check Sterilization Pouches are not considered hazardous waste and can be disposed of in regular trash (40 CFR 261.24 tested using the TCLP, EPA Publication SW-846).

CROSSTEX®
A Cantel Medical Company

MADE IN USA

MEDICAL ACTION VIEW PACK HEAT-SEAL POUCHES

View pack consists of a transparent blue tinted front sealed to a paper backing. The sides are secured by three rail seals to enhance peeling characteristics and eliminate the possibility of blowouts during autoclaving. The chevron seal has rounded corners for ease of opening and to reduce fiber/laminate tear. The transparent front is comprised of tough multiple ply tinted laminated polyester to polypropylene films. Medical grade white sterilization paper as specified by the British Standards Institute. Dual colored arrows are printed above the chevron indicating direction for correct peel of both pouches and reels. The pink arrows change to brown during steam or vapor sterilization and the blue to yellow/green when E.O. sterilized.

215-	4" x 8" Heat-Seal Pouches, 2000/cs
225	6" x 10" Heat-Seal Pouches, 2000/cs
230-	6" x 15" Heat-Seal Pouches, 2000/cs
235	6" x 8" Heat Seal Pouches, 2000/cs
245	8" x 13" Heat-Seal Pouches, 1000/cs
246	8" x 16" Heat-Seal Pouches, 1000/cs
248	8" x 24" Heat-Seal Pouches, 1000/cs
258	12" x 18" Heat-Seal Pouches, 500/cs
260-	16.5" x 16" Heat Seal Pouches, 500/cs
265	4" x 21.75" Heat Seal Pouches, 2000/cs

MEDICAL ACTION VIEW PACK HEAT-SEAL REELS

Triple rail seals, pure medical grade papers and quality manufacturing. Directional arrows for proper peeling every time. Reel cutter/dispenser and heat sealer programs eliminate capital expense.

405S	2" x 100' Heat Seal Reel, 16l/cs
410S	3" x 100' Heat Seal Reel, 8/cs
415S	4" x 100 ft Heat Seal Reel, 16/cs
420S	6" x 100 ft Heat Seal Reel, 8/cs
425S	10" x 100 ft Heat Seal Reel, 4/cs

MEDICAL ACTION VIEW PACK SELF-SEAL POUCHES

Patented self seal closure provides triple seal eliminating blowouts. Potential for channeling eliminated. Heat seal performance with self seal convenience.

520	3 1/2" x 9" Self-Seal Pouches, 2000/cs
525	5 1/4" x 10" Self-Seal Pouches, 2000/cs
530	5.25" x 14" Self Seal Pouch, 2000/cs
545	7 1/2" x 13" Self-Seal Pouches, 1000/cs
546	8" x 16" Self-Seal Pouches, 1000/cs
555	12" x 15" Self Seal Pouches, 1000/cs
558	12" x 18" Self-Seal Pouches, 1000/cs



TIDI AUTOCLAVE ENVELOPES

Self-sealing and color indicated.

30203	Paper Type, 2 1/2" x 1 1/2" x 10 1/2" Autoclave Envelopes, White, 1000/cs
5543	Blue Glassine (Transparent), 2 1/2" x 8 1/4" Autoclave Envelopes, 5 bx/cs
5544	Blue Glassine (Transparent), 3 1/2" x 9 3/4" Autoclave Envelopes, 5 bx/cs
5545	Blue Glassine (Transparent), 6" x 9 3/4" Autoclave Envelopes, 2 bx/cs
5549	See-Thru, Clear One Side, 2 3/4" x 10" Autoclave Envelopes, 300/bx, 6000/cs
5550	See-Thru, Clear One Side, 3 1/4" x 6 1/2" Autoclave Envelopes, 200/bx, 8000/cs
5551	See-Thru, Clear One Side, 3 1/2" x 10" Autoclave Envelopes, 200/bx, 4000/cs
5552	See-Thru, Clear One Side, 5 1/4" x 11" Autoclave Envelopes, 200/bx, 3000/cs
5553	See-Thru, Clear One Side, 7 1/2" x 12" Autoclave Envelopes, 200/bx, 2400/cs

CROSSTEX SELF-SEALING AUTOCLAVE BAGS - PAPER

Unique hospital double-fold seal and pull-off adhesive tab offer a true seal of integrity. Available in two convenient lengths, 8.75" / 122cm and 10.5" / 127cm. Gusset feature provides 50% more inner space than a 3.5" x 9" / 9 x 23cm sterilization pouch. Color process indicators for use in steam, chemical vapor, EtO and dry heat processing. Made in USA.

OC	Bag, 2.5" x 1.5" x 10.5", 1000/ctn, 4 ctn/cs
OCS	Bag, 2.5" x 1.5" x 8.75", 1000/ctn, 4 ctn/cs

CROSSTEX SURE-CHECK STERILIZATION POUCHES

The first and only pouches with built-in internal and external steam sterilization indicators. Gives you the assurance of confirming all three sterilization parameters: time, temperature and sterilant contact with an internal multi-parameter steam indicator printed directly on the pouch. Eliminate the extra step of adding separate multi-parameter indicators to each pouch.

SCL12152	12" x 15" Pouch, 100/bx, 5 bx/cs
SCL12182	12" x 18" Pouch, 100/bx, 5 bx/cs
SCL2	7.5" x 13" Pouch, 200/bx, 5 bx/cs
SCM2	5.5" x 10" Pouch, 200/bx, 10 bx/cs
SCS2	3.5" x 9" Pouch, 200/bx, 20 bx/cs
SCX2	2.75" x 9" Pouch, 200/bx, 20 bx/cs
SCXS2	3.5" x 5.25" Pouch, 200/bx, 10 bx/cs
SCXX2	2.25" x 4" Pouch, 200/bx, 20 bx/cs

CROSSTEX STERIZATION POUCHES - SELF SEALING

All articulating papers feature a soft, smooth, non-sticking, super sensitive surface for marking at every point of articulation. Available in Standard, Horse Shoe and Precisely True (Finest Quality), the most accurate marking paper - even in wet areas with little or no smudging.

SCB1X	4.25" x 11" Pouch, 200/bx, 10 bx/cs
SCL	7.5" x 13" Pouch, 200/bx, 5 bx/cs
SCL 1015	10" x 15" Pouch, 100/bx, 5 bx/cs
SCL 1215	12" x 15" Pouch, 100/bx, 5 bx/cs
SCL 1218	12" x 18" Pouch, 100/bx, 5 bx/cs
SCM	5.25" x 10" Pouch, 200/bx, 10 bx/cs
SCMPP	5.25" x 10" Pouch, Pink w/a purpose, 200/bx, 10 bx/cs
SCQ	3.25" x 9" Pouch, 200/bx, 20 bx/cs
SCS	3.5" x 9" Pouch, 200/bx, 20 bx/cs
SCS5	3.5" x 9" Pouch, 500/bx, 10 bx/cs
SCSPP	3.5" x 9" Pouch, Pink w/a purpose, 200/bx, 20 bx/cs
SCX	2.75" x 9" Pouch, 200/bx, 20 bx/cs
SCXS	3.5" x 5.25" Pouch, 200/bx, 10 bx/cs
SCXX	2.25" x 4" Pouch, 200/bx, 20 bx/cs
SCZ	2" x 8" Pouch, 200/bx, 20 bx/cs

**Brand names
you can trust.**

Sterilization Tapes



3M™ COMPLY™ (ATI™) INSTRUMENT PROTECTORS

Protects sharp pointed surgical instruments from damage and reduces possibility of pouch puncture during sterilization. Indicators on the protectors verify steam or EO processing.

13911	2" x 5" Instrument Protector, 100/pk, 10 pk/cs
13913	3 1/2" x 6 5/8" Instrument Protector, 100/pk, 10 pk/cs
13915	5 1/2" x 9 1/2" Instrument Protector, 100/pk, 10 pk/cs



3M™ COMPLY™ INDICATOR TAPE

1222-0N	Indicator Tape For Steam, 1/2" x 60 yd, Beige, 36/cs
1222-1N	Indicator Tape For Steam, 1" x 60 yd, Beige, 18/cs
1222-2N	Indicator Tape For Steam, 2" x 60 yd, Beige, 10/cs
1222-6N	Indicator Tape For Steam, 3/4" x 60 yd, Beige, 24/cs
1224-0	Indicator Tape For EO, 1/2" x 60 yd, Green, 36/cs
1224-1	Indicator Tape For EO, 1" x 60 yd, Green, 18/cs
1224-6	Indicator Tape For EO, 3/4" x 60 yd, Green, 24/cs
1255-1N	Indicator Tape For Steam, 1" x 60 yd, Blue, For Disposable Wraps, 18/cs
1255-6N	Indicator Tape For Steam, 3/4" x 60 yd, Blue, For Disposable Wraps, 24/cs



3M™ COMPLY™ INDICATOR TAPE DISPENSERS

Durable for long-lasting use. For dispensing sterilization indicator tapes.

C22	Heavy Duty Tape Dispenser, Holds Two 1/2 to 1" Rolls of Tape
M52	Indicator Tape Dispenser w/o tabber, Holds One 1/2" to 1" Roll of Tape
M920	Automatically Dispenses Up to 4" in Length, Holds One 1" Roll of Tape, 6/cs
M96	Dispenser w/wheel accessory, Automatically Dispenses Up to 5" in Length, Holds One 1" Roll of Tape, 6/cs

CROSSTEX SURE-CHECK® STRIP

Use regularly inside sterilization packaging such as pouches, tubing, autoclave bags, CSR wraps. Process indicator strip turns color in both steam and chemical vapor sterilizers when all conditions for sterilization have been achieved.

SCK Strip, White, 3.75" x 6.25", 100/bx, 24 bx/cs

CROSSTEX STERILIZATION TAPE

Seals autoclave bags, tubing, CSR wraps and other sterilization packaging. Used to indicate sterilizing conditions have been achieved during the sterilization cycle. Used to indicate sterilizing conditions have been achieved in steam sterilizers during the sterilization cycle.

STL	Tape, 1" x 60 yds, 18 rl/cs
STM	Tape, 3/4" x 60 yds, 24 rl/cs
STS	Tape, 1/2" x 60 yds, 36 rl/cs

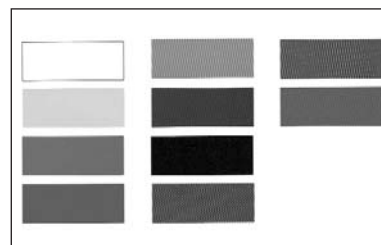
TIMEMED HI-LO TEMP TAPE

Packaging: 300" roll on a 1" core.

AT-301	1" Temp Tape, 300"/rl
AT-312	1/2" Temp Tape, 300"/rl
AT-334	3/4" Temp Tape, 300"/rl

TIMEMED INDICATOR TAPE FOR AUTOCLAVING

TSI-1260-STR	1/2" Indicator Tape, 2160" Roll On 3" Core, Striped
TSI-160-STR	1" Indicator Tape, 2160" Roll On 3" Core, Striped
TSI-3460-STR	3/4" Indicator Tape, 2160" Roll On 3" Core, Striped
TSI-501	1" Indicator Tape, 500" Roll On 1" Core
TSI-512	1/2" Indicator Tape, 500" Roll On 1" Core
TSI-534	3/4" Indicator Tape, 500" Roll On 1" Core



TIMEMED INSTROMARK® TAPE

3/8" x 200" roll on a 1" core.

IN-600-1	White Instromark® Tape, 200"/rl
IN-600-18	Black Instromark® Tape, 200"/rl
IN-600-19	Brown Instromark® Tape, 200"/rl
IN-600-2	Yellow Instromark® Tape, 200"/rl
IN-600-3	Green Instromark® Tape, 200"/rl
IN-600-5	Red Instromark® Tape, 200"/rl
IN-600-6	Orange Instromark® Tape, 200"/rl
IN-600-7	Blue Instromark® Tape, 200"/rl

ARJO WIGGINS STERISHEET® 77P STERILIZATION WRAP

Encompasses the broadest variety of uses within the hospital. Offers the user a softer yet stronger wrap while, at the same time, providing an excellent barrier to both liquid and airborne bacteria. Trays weighing up to 15 pounds can easily be accommodated.

77P-1212	12" x 12" Sterilization Wrap, 1000/cs
77P-1515	15" x 15" Sterilization Wrap, 1000/cs
77P-1818	18" x 18" Sterilization Wrap, 500/cs
77P-2020	20" x 20" Sterilization Wrap, 500/cs
77P-2424	24" x 24" Sterilization Wrap, 500/cs
77P-3030	30" x 30" Sterilization Wrap, 250/cs
77P-3636	36" x 36" Sterilization Wrap, 250/cs
77P-4040	40" x 40" Sterilization Wrap, 250/cs
77P-4545	45" x 45" Sterilization Wrap, 250/cs
77P-4848	48" x 48" Sterilization Wrap, 100/cs
77P-5454	54" x 54" Sterilization Wrap, 100/cs
77P-5472	54" x 72" Sterilization Wrap, 100/cs

ARJO WIGGINS STERISHEET® 88 STERILIZATION WRAP

This strong, heavy duty wrap is durable enough to withstand even the most rigorous applications. Offers the user the added features of softness, outstanding liquid repellency and ease in handling. Despite its weight, this wrap is highly permeable to either gar or steam and provides an excellent sterile barrier.

88-1818	18" x 18" Sterilization Wrap, 500/cs
88-2020	20" x 20" Sterilization Wrap, 500/cs
88-2424	24" x 24" Sterilization Wrap, 500/cs
88-3030	30" x 30" Sterilization Wrap, 250/cs
88-3636	36" x 36" Sterilization Wrap, 150/cs
88-4040	40" x 40" Sterilization Wrap, 100/cs
88-4545	45" x 45" Sterilization Wrap, 100/cs
88-4848	48" x 48" Sterilization Wrap, 100/cs
88-5454	54" x 54" Sterilization Wrap, 100/cs
88-5472	54" x 72" Sterilization Wrap, 50/cs



BUSSE CSR WRAPS

Superior barrier properties against both air and water-borne bacteria, combined with excellent water repellency and high wet or dry tensile strength. Memory is virtually non-existent. Soft, cloth-like hand makes each sheet easily drapable and comfortable to work with.

843	15" x 15" CSR Wrap, 100/cs
845	12" x 12" CSR Wrap, 100/cs
846	18" x 18" CSR Wrap, 100/cs
847	24" x 24" CSR Wrap, 100/cs
848	30" x 30" CSR Wrap, 100/cs
849	36" x 36" CSR Wrap, 100/cs
850	12" x 12" CSR Wrap, 1000/cs
851	15" x 15" CSR Wrap, 500/cs
852	20" x 20" CSR Wrap, 500/cs
853	24" x 24" CSR Wrap, 500/cs
854	30" x 30" CSR Wrap, 250/cs
855	36" x 36" CSR Wrap, 250/cs
856	40" x 40" CSR Wrap, 250/cs
857	45" x 45" CSR Wrap, 250/cs
858	54" x 54" CSR Wrap, 100/cs



DYNAREX C.S.R. WRAPS

Non-woven. Blue.

4412	12" x 12" CSR Wrap, 1000/cs
4415	15" x 15" CSR Wrap, 1000/cs
4420	20" x 20" CSR Wrap, 500/cs
4424	24" x 24" CSR Wrap, 500/cs
4430	30" x 30" CSR Wrap, 250/cs
4436	36" x 36" CSR Wrap, 250/cs
4440	40" x 40" CSR Wrap, 250/cs
4445	45" x 45" CSR Wrap, 250/cs
4448	48" x 48" CSR Wrap, 100/cs
4454	54" x 54" CSR Wrap, 100/cs
4472	54" x 72" CSR Wrap, 100/cs



KIMBERLY-CLARK KIMGUARD KC500 STERILIZATION WRAP

KC500 is the fifth of six strength levels in the KIMGUARD line and is made of our newest low lint SMS sterilization fabric. It's dark blue, softer and stronger than ever and still delivers the barrier protection you expect from the leader in sterilization packaging. Sequential wrap, often used for heavy instrument sets, retractors and applications requiring frequent handling. Natural, latex-free, non-sterile, steam and EO compatible. -Formerly sold as KIMGUARD Heavy Duty Sterilization Wrap.

68136	Heavy-Duty Sterilization Wrap, 36" x 36", 150/cs
68145	Heavy-Duty Sterilization Wrap, 45" x 45", 50 sheets/pk, 2 pk/cs

KIMBERLY-CLARK KIMGUARD ONE-STEP™ KC100 STERILIZATION WRAP

KC100 is the first of six strength levels in the KIMGUARD ONE-STEP™ line and is made with two sheets of our patented low lint SMS sterilization fabric bonded together along the edges. Each application is light blue and imprinted with its name, size and lot code for your convenience. Simultaneous (non-sequential) wrap, often used for light linen packs, linen gowns, towel packs, single basins and other lighter wrapping needs. One application equivalent to 2 sheets of wrap. Natural, latex-free, non-sterile, steam and EO compatible. - Formerly sold as SPUNGUARD ONE-STEP™ Regular Sterilization Wrap.

12718	Regular Sterilization Wrap, 18" x 18", 480/cs
12720	Regular Sterilization Wrap, 20" x 20", 240/pk, 2 pk/cs
12724	Regular Sterilization Wrap, 24" x 24", 240/cs
12730	Regular Sterilization Wrap, 30" x 30", 144/cs
12736	Regular Sterilization Wrap, 36" x 36", 144/cs

Sterilization Wraps

KIMBERLY-CLARK KIMGUARD ONE-STEP™ KC200 STERILIZATION WRAP

62024	Regular Sterilization Wrap, 24" x 24", 240/cs
62030	Regular Sterilization Wrap, 30" x 30", 144/cs
62036	Regular Sterilization Wrap, 36" x 36", 144/cs
62040	Regular Sterilization Wrap, 40" x 40", 120/cs

KIMBERLY-CLARK KIMGUARD ONE-STEP™ KC300 STERILIZATION WRAP

12818	Heavy-Duty Sterilization Wrap, 18" x 18", 480/cs
12824	Heavy-Duty Sterilization Wrap, 24" x 24", 240/cs
12830	Heavy-Duty Sterilization Wrap, 30" x 30", 144/cs
12836	Heavy-Duty Sterilization Wrap, 36" x 36", 144/cs
12848	Heavy-Duty Sterilization Wrap, 48" x 48", 96/cs
12872	Heavy-Duty Sterilization Wrap, 54" x 72", 48/cs

KIMBERLY-CLARK KIMGUARD ONE-STEP™ KC400 STERILIZATION WRAP

62224	Midweight Sterilization Wrap, 24" x 24", 120/cs
62236	Midweight Sterilization Wrap, 36" x 36", 72/cs
62240	Midweight Sterilization Wrap, 40" x 40", 24/pk, 3pk/cs
62245	Midweight Sterilization Wrap, 45" x 45", 24/pk, 2pk/cs
62248	Midweight Sterilization Wrap, 48" x 48", 24/cs
62254	Midweight Sterilization Wrap, 54" x 54", 24/pk, 1pk/cs

KIMBERLY-CLARK KIMGUARD ONE-STEP™ KC500 STERILIZATION WRAP

Made of two sheets of our patented SMS sterilization fabric bonded together along the edges. Each application is dark blue and imprinted with its name, size and lot code for your convenience. -Often used for heavy instrument sets, retractors and applications requiring frequent handling-

62124	Sterilization Wrap, KC500, 24" x 24", 120/cs
62136	Sterilization Wrap, KC500, 36" x 36", 72/cs
62148	Heavy-Duty Sterilization Wrap, 48" x 48", 24/cs
62154	Heavy-Duty Sterilization Wrap 54" x 54", 24 applications per pack, 1 pk/cs

KIMBERLY-CLARK KIMGUARD ONE-STEP™ KC600 STERILIZATION WRAP

62636	Ultra Sterilization Wrap, 36" x 36", 72/cs
62640	Ultra Sterilization Wrap, 40" x 40", 48/cs
62645	Ultra Sterilization Wrap, 45" x 45", 48/cs

KIMBERLY-CLARK KIMGUARD™ KC100 STERILIZATION WRAP

10715	Regular Sterilization Wrap, 15" x 15", 1000/cs
10720	Regular Sterilization Wrap, 20" x 20", 1000/cs
10724	Regular Sterilization Wrap, 24" x 24", 500/cs
10730	Regular Sterilization Wrap, 30" x 30", 150/pk, 2 pk/cs
10736	Regular Sterilization Wrap, 36" x 36", 300/cs
10748	Regular Sterilization Wrap, 48" x 48", 250/cs
10754	Regular Sterilization Wrap, 54" x 54", 100/cs

KIMBERLY-CLARK KIMGUARD™ KC200 STERILIZATION WRAP

68012	Regular Sterilization Wrap, 12" x 12", 1000/cs
68015	Regular Sterilization Wrap, 15" x 15", 1000/cs
68018	Regular Sterilization Wrap, 18" x 18", 1000/cs
68024	Regular Sterilization Wrap, 24" x 24", 500/cs
68030	Regular Sterilization Wrap, 30" x 30", 300/cs
68036	Regular Sterilization Wrap, 36" x 36", 300/cs
68040	Regular Sterilization Wrap, 40" x 40", 250/cs
68048	Sterilization Wrap, 48" x 48", 100/cs



MEDICAL ACTION SAF-T-TUFF® STERILITY MAINTENANCE COVERS

Protect sterilized packs from moisture, airborne contaminants, and tampering. Polyethylene.

860	10" x 15" Clear Maintenance Cover, Heat-Sealed, 1000/cs
880SMC	24" x 30" Sterility Maintenance Cover, Heat-Sealed, 250/cs
C20610	6" x 10" Maintenance Cover, Heat-Seal, 100/pk, 10 pk/cs
C20812	8" x 12" Maintenance Cover, Heat-Seal, 100/pk, 10 pk/cs
C21220	12" x 20" Maintenance Cover, Heat-Seal, 50/pk, 10 pk/cs
C21630	16" x 30" Maintenance Cover, Heat-Seal, 50/pk, 5 pk/cs
C40812	8" x 12" Maintenance Cover, Self-Seal, 100/pk, 10 pk/cs
C41015	10" x 15" Maintenance Cover, Self-Seal, 100/pk, 10 pk/cs
C41220	12" x 20" Maintenance Cover, Self-Seal, 50/pk, 10 pk/cs
C41622	16" x 22" Maintenance Cover, Self-Seal, 100/pk, 5 pk/cs
C41630	16" x 30" Maintenance Cover, Self-Seal, 50/pk, 5 pk/cs
C42430	24" x 30" Maintenance Cover, Self-Seal, 50/pk, 5 pk/cs
C42537	25" x 37" Maintenance Cover, Self-Seal, 25/pk, 4 pk/cs

MEDICAL ACTION STERILITY MAINTENANCE COVERS

815	Cover, 8" x 12", Print/Label Tear & Seal Instructions, 2.25 Mil, Clear/Blue, LLDPE Film, Flat Pack, Heat-Seal Adhesive Strip, 250/bx, 4 bx/cs
820	Cover, 10" x 15", Print/Label Tear & Seal Instructions, 2.25 Mil, Clear/Blue, LLDPE Film, Flat Pack, Heat-Seal Adhesive Strip, 250/bx, 4 bx/cs
825	Cover, 12" x 20", Print/Label Tear & Seal Instructions, 2.25 Mil, Clear/Blue, LLDPE Film, Flat Pack, Heat-Seal Adhesive Strip, 250/bx, 2 bx/cs
830	Cover, 16" x 22", Print/Label Tear & Seal Instructions, 2.25 Mil, Clear/Blue, LLDPE Film, Flat Pack, Heat-Seal Adhesive Strip, 250/bx, 2 bx/cs
835	Cover, 16" x 30", Print/Label Tear & Seal Instructions, 2.25 Mil, Clear/Blue, LLDPE Film, Flat Pack, Heat-Seal Adhesive Strip, 250/cs
840	Cover, 24" x 10", Print/Label Tear & Seal Instructions, 2.25 Mil, Clear/Blue, LLDPE Film, Flat Pack, Heat-Seal Adhesive Strip, 250/cs
845	Cover, 25" x 37", Print/Label Tear & Seal Instructions, 2.25 Mil, Clear/Blue, LLDPE Film, Flat Pack, Heat-Seal Adhesive Strip, 100/cs
850	Cover, 6" x 10", Print/Label Tear & Seal Instructions, 2.25 Mil, Clear/Blue, LLDPE Film, Flat Pack, Heat-Seal Adhesive Strip, 250/bx, 4 bx/cs
855SMC	Cover, 8" x 12", Print/Label Tear & Seal Instructions, 2.25 Mil, Clear/Blue, J70, 1 Qt, LLDPE Film, Flat Pack, Heat-Seal Adhesive Strip, 250/bx, 4 bx/cs
865	Cover, 12" x 20", Print/Label Tear & Seal Instructions, 2.25 Mil, Clear/Blue, LLDPE Film, Flat Pack, Heat-Seal Adhesive Strip, 250/bx, 2 bx/cs
875	Cover, 16" x 30", Print/Label Tear & Seal Instructions, 2.25 Mil, Clear/Blue, LLDPE Film, Flat Pack, Heat-Seal Adhesive Strip, 250/cs

TIDI STERILIZATION WRAP

Provides a superior barrier to saline, blood and water. Suitable for steam, ethylene oxide, radiation and E-Beam sterilization methods. USA made product is nonwoven material. Blue.

960172	12" x 12" Sterilization Wrap, 1000/cs
960173	15" x 15" Sterilization Wrap, 1000/cs
960174	18" x 18" Sterilization Wrap, 500/cs
960175	20" x 20" Sterilization Wrap, 500/cs
960176	24" x 24" Sterilization Wrap, 500/cs
960177	30" x 30" Sterilization Wrap, 400/cs
960178	36" x 36" Sterilization Wrap, 200/cs

CROSSTEX CSR STERILIZATION WRAPS

Manufactured from environmentally friendly cellulose material made from wood pulp, NOT petroleum. Eliminates skin sensitivity issues associated with oily residues inherent in plastic based wrappers. Bacterial barrier to both airborne and waterborne contamination. Outstanding liquid repellency - water, alcohol, iodine. Exceptional Tensile Strength - wet or dry. Use with EtO, steam, gamma irradiation or E-Beam sterilization methodology. Even texture to permit immediate visual detection of small pinholes/tears. Meets FFA (Flammable Fabrics Act) requirements.

SW12	12" x 12" Wrap, 100/pkg, 10 pkg/cs
SW15	15" x 15" Wrap, 100/pkg, 5 pkg/cs
SW18	18" x 18" Wrap, 100/pkg, 5 pkg/cs
SW20	20" x 20" Wrap, 100/pkg, 5 pkg/cs
SW24	24" x 24" Wrap, 100/pkg, 5 pkg/cs
SW30	30" x 30" Wrap, 250/cs
SW36	36" x 36" Wrap, 250/cs
SW40	40" x 40" Wrap, 250/cs
SW48	48" x 48" Wrap, 100/cs
SW54	54" x 54" Wrap, 100/cs



BB-0312H



BB-2930C



BB0528X

CERTOL PROBARRIER ENVIRONMENTAL SURFACE BARRIERS

Provides surface protection for hard to clean areas.

BB-0312H	Protection For Unit Hoses, Evacuation Controls, Air/Water, Syringes, Pophpy Handpieces & Digital Sensors, 3" x 12" Tube Sox, 500/bx, 6 bx/cs
BB-2930C	Protection For Upholstered Surfaces, 29" x 30" Universal Chair Sox, 200/bx, 5 bx/cs
BB0528X	5" x 28" X-Ray Sox, 250/bx, 10 bx/cs

CROSSTEX X-RAY SLEEVE

Universal clear Plastic sleeve fits most x-ray machines. Prevents potential cross-contamination from airborne aerosols and spatter. Provides protection from potential damage by surface disinfectants. Will not adversely affect x-ray use.

BCXR	15" x 26" Sleeve, 250/bx 4 bx/cs
------	----------------------------------

CROSSTEX TRAY SLEEVES

Clear Disposable plastic sleeves, with end fold for secure fit, for bracket/instrument trays. Prevents cross-contamination. Simply remove after each patient and replace. Available in five (5) convenient sizes to accommodate most trays.

BCTS1014	10.5" x 14" Sleeve, 500/bx, 4 bx/cs
BCTS1114	11.625" x 14.5" Sleeve, 500/bx 4 bx/cs
BCTS1116	11.5" x 16" Sleeve, 500/bx 4 bx/cs
BCTS710	7.5" x 10.5" Sleeve, 500/bx 4 bx/cs

CROSSTEX LIGHT SLEEVE FOR T-STYLE HANDLE

Clear plastic disposable light handle sleeve. Die-cut for easy placement ñ indicator arrow identifies opening for easy placement on handle. Will not fall off during use.

BCLST	4" x 5.75" Sleeve, 500/bx, 12 bx/cs
-------	-------------------------------------



CERTOL V-CIDE™ CHEMICAL VAPOR STERILANT SOLUTION

Liquid chemical sterilant solution designed for use in unsaturated chemical vapor sterilizers. Improved formula reduces odor-causing agents. Does not corrode, rust or dull instruments. Cost-effective alternative for your chemical vapor sterilizer. Equivalent in performance and efficacy to Vapo-Steril® solution. Compatible with most materials used in the construction of medical and dental instruments.

VC338	V-Cide™ Chemical Vapor Sterilant Solution, Liter Bottle, 4/bx, 4 bx/cs
-------	--

MIDMARK SPEEDCLEAN

Available for all three sterilizers.

002-0396-01	Speedclean, 16 oz. Bottles, 12 Bottles/cs
002-0396-02	Speedclean, 32 oz. Bottles, 12/cs

MILTEX STERILIZER SPIRAL RACK

For surgical needles.

3-50	Sterilizer Spiral Rack
------	------------------------

Sterilizers



RITTER M7 SPEEDCLAVE® SELF-CONTAINED STERILIZER

The perfect choice for anyone looking for an effective, manual sterilizer - at an unbelievably low price. It sterilizes both wrapped and unwrapped instruments, linen packs and glassware. From a cold start, unwrapped instruments take only 9 minutes - starting hot, it's just 6 minutes. Timer regulates steam time from 0 to 30 minutes. Regulator allows temperature to be preset between 240°F and 270°F. Chamber size: 7 1/2" diameter x 15"H. 120VAC, 60Hz, 10 AMPS, 120VAC UL and CUL Listed, CSA Certified.

M7-022 M7 SpeedClave



M9-022



M9D-022

RITTER M9 ULTRACLAVE® AUTOMATIC STERILIZER

Today, more than ever, you need products that are reliable and simple to use. Load it... set it... and forget it. Select your cycle and the time is set for you. Once the sterilization process is complete, the door opens automatically and quietly to dissipate the steam to give you fast drying time for your instruments. Easy front access for filling and draining and controls that are easy to understand. The chamber size is 9" diameter by 15" deep. Pre-programmed sterilization cycle controls: Unwrapped (132°C or 270°F for 3 minutes), Pouches (132°C or 270°F for 5 minutes), and Packs (121°C or 250°F for 30 minutes). Programmable cycle features allow custom creation of different cycle parameters for special sterilization needs, such as the following: time (3 to 90 minutes), temperature (230 to 275°F), dry time (0 to 60 minutes), vent (slow or fast) and two program buttons allow you to store the custom cycles. 115VAC, UL61010A-1, UL61010-2-041, CAN/CSA C22.2

M9-022 M9 UltraClave Automatic Sterilizer
M9D-022 M9D AutoClave® Automatic Sterilizer w/manual door

Accessories

9A224001 Deep Tray
9A226001 Pouch Rack (M9 & M11)

RITTER M9 ULTRACLAVE® AUTOMATIC STERILIZER PRINTER

9A259001 Printer Accessory For M9-022, M9D-022, M11-022 & M11D-022



M11-022



M11D-022

RITTER M11 ULTRACLAVE® AUTOMATIC STERILIZER

With its unique 11" x 18" chamber, it provides the most sterilization capacity of any standard countertop sterilizer on the market, making it perfect for larger packs and instruments. Easily accessible, front fill and drain tube features provides for simple and efficient operation. Pre-programmed sterilization cycle controls: Unwrapped (132°C or 270°F for 3 minutes), Pouches (132°C or 270°F for 5 minutes), and Packs (121°C or 250°F for 30 minutes). Programmable cycle features allow custom creation of different cycle parameters for special sterilization needs, such as the following: time (3 to 90 minutes), temperature (230 to 275°F), dry time (0 to 60 minutes), vent (slow or fast) and two program buttons allow you to store the custom cycles. 115VAC, UL61010A-1, UL61010-2-041, CAN/CSA C22.2

M11-022 M11 UltraClave Automatic Sterilizer
M11D-022 M11D AutoClave Automatic Sterilizer w/manual door

Accessories

9A225001 Deep Tray



3870EA



EZ10



EZ10k



EZ9

TUTTNAUER FULLY AUTOMATIC AUTOCLAVES (EZ SERIES)

Fully automatic sterilizers fill, sterilize, exhaust and dry at the touch of a button. Innovative closed door drying cycle circulates warm, filtered fresh air through the chamber to maintain sterility and ensure efficient drying of packs and pouches. Contemporary design with an easy to read display panel. Two year parts and labor warranty. Optional printer available.

3870EA Large Capacity Autoclave, 15"Dia x 30"D Chamber Size, 230V
EZ10 EZ10 Autoclave, 10" x 19", 6 Gal Volume, 4 Trays, 120V
EZ10k EZ10k Kwiklave Autoclave, Quick Cycle Model, 10" x 19", 6 Gal Volume, 4 Trays, 230V
EZ9 EZ9 Autoclave, 9" x 18", 5 Gal Volume, 3 Trays, 120V



2340M



2540M



2540MK



3870M

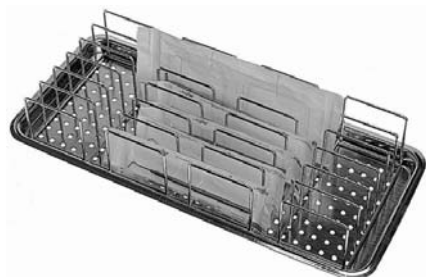
TUTTNAUER MANUAL AUTOCLAVES (M/MK SERIES)

Sterilization cycle and separate drying cycle feature automatic shut off. Stainless steel chamber and door. Overheat cutoff prevents burnout of heating elements. Drain valve located in front of machine. A.S.M.E. stamped, U.L. listed and C.S.A. approved. One year parts and labor warranty.

2340M	9"Dia x 18"D Chamber Size Autoclave, 110V
2540M	10"Dia x 19"D Chamber Size Autoclave, 110V
2540MK	10"Dia x 19"D Chamber Size Autoclave, 220V
3870M	15"Dia x 30"D Chamber Size Autoclave, 220V

TUTTNAUER PRINTER FOR AUTOCLAVES

1610406	Chart Recording Paper For Optional Printer, 5/pkg
P	Optional Printer For EZ9, EZ10, EZ10k, 3870EA, 2540EHS & 3870EHS



TUTTNAUER AUTOCLAVE POUCH RACK

Stainless steel. Convenient for the loading of bagged instruments.

AR910	Pouch Rack For All 9" & 10" Chambers, 2/bx
AR920	Pouch Rack For All 15" Chambers, 2/bx



TUTTNAUER CHAMBER BRITE™ POWDERED AUTOCLAVE CLEANER

Designed specifically for steam sterilizers. Effectively cleans and descales the reservoir, chamber and tubing in minutes. Convenient, pre-measured packets.

CB0010	Autoclave Cleaner, 10/bx, 12 bx/cs
--------	------------------------------------



7000



9000

TUTTNAUER DISTILLERS

Provides pure water using the oldest and most effective method of water treatment. Removes up to 99% of most tap water contaminants. Eliminates the inconvenience and expense of buying bottled water.

7000	Four Gallon Distiller
7000-12	12 Gallon Distiller
7000-8	8 Gallon Distiller
9000	One Gallon Distiller

Accessories

9000F	Carbon Filters, 6/pk
KSD	Kleen Still Descaler



TUTTNAUER VALUEKLAVE 1730

Provides all basic sterilization needs at an economical price. Compact size makes it a perfect unit for small offices or a second autoclave for larger practices. Fast cycle time - 11 minutes from a hot start (Standard unwrapped cycle time). One year parts and labor warranty.

ValueKlave1730	7"Dia x 13"D Chamber Size Autoclave
----------------	-------------------------------------

3M™ STERI-VAC™ PRINTER PAPER

1215A	2" x 150 ft Printer Paper For Models 400B & 400C Sterilizers (Model 410 printer), 2/cs
1216A	2 3/8" x 100 ft Printer Paper For Models 4XL & 5XL Sterilizers, 2/cs
1217	3 1/8" x 100 ft Printer Paper For Model 8XL Sterilizer, 2/cs

Personal Attention Local Service

Surface Disinfectants



CERTOL PROSPRAY™ C-60

A concentrated dual synthetic phenolic disinfectant/cleaner for environmental surfaces in healthcare settings. Broad spectrum intermediate level activity against TB, HIV meets CDC guidelines. Water based formula safe for repeated use on vinyls, plastics, metals.

- PSC60/32 32 oz. Meter Dose Bottle, Makes 8 Gallons, 12btl/cs
 PSC60/48 Operator Pack, 48- 1/2 oz. Unit Dose, Makes 6 Gallons, 1pk/bx, 3bx/cs
 PSC60/INT Intro Kit, Includes: 24- 1/2 oz. Unit Dose, 2-16 oz. Squirt Bottles & 2 Spray Caps

Accessories

- CAPSQUIRT Squirt Top is Alternative to Spray Head, Reduces Aerosols During Surface Disinfection, 6/cs
 PSC60SB Empty 16 oz Spray Bottle Labeled to Meet OSHA Guidelines, Includes Spray Head & Squirt Top, 6/cs



CERTOL PROSPRAY™ SURFACE CLEANER/DISINFECTANT

A ready-to-use dual synthetic phenolic disinfectant/cleaner for environmental surfaces in healthcare settings. Broad spectrum intermediate level activity against TB, HIV meets CDC guidelines. Water based formula safe for repeated use on vinyls, plastics, metals.

- PSC050 Disinfectant Refill, 5 gal, 1/cs
 PSC128 Disinfectant Refill, 1 gal, 4/cs
 PSC240 24 oz. Disinfectant Pump Spray, 15/cs

Accessories

- PSCPS Empty 16 oz Spray Bottle Labeled to Meet OSHA Guidelines, Includes Spray Head & Squirt Top, 6/cs



KIMBERLY-CLARK ALCOHOL WIPES

Ideally suited for ISO Class 4 or higher clean rooms. One-step application of alcohol to critical surfaces. Use for surface wiping in clean room environments. 100% polypropylene base sheet. 70% isopropyl alcohol/30% deionized water.

- 06070 KIMTECH PURE CL4 PreSat Alcohol Wipe, White, 9" x 11", 40/pk, 10 pk/cs

CROSSTEX SANITEX PLUS® SPRAY DISINFECTANT/CLEANER

Kills TB in 6 min. HBV in 3 min. HIV in 30 sec. Active Ingredients: Quaternary Ammonium & alcohol. Low alcohol content (21%) provides excellent cleaning with rapid TB kill. Use for both cleaning and disinfecting steps on hard, non-porous surfaces and patient care equipment.

- JSSDP Disinfectant, Qt Spray Bottle, 12/cs
 JSSGP Disinfectant, Gal, 4/cs



SAFETEC SANIZIDE PLUS™ DISINFECTANT

SaniZide Plus™ is a ready-to-use hospital grade, hard surface disinfectant/deodorizer. The Quaternary Ammonium, alcohol free formulation is non-flammable making SaniZide Plus™ safe to ship, as well as non-corrosive. Choosing SaniZide Plus™ helps you to comply with the OSHA Bloodborne Pathogens Standard, which requires the use of an "appropriate disinfectant" that is tuberculocidal and virucidal against HIV-1 and HBV. For use on: glass, porcelain, ceramic, metal, polyethylene, polypropylene, vinyl, polyester, rubber, bakelite, and many more hard surfaces.

- 34800 2 fl. oz. Spray Dispenser, 24/cs
 34805 16 fl. oz. Spray Dispenser, 12/cs
 34810 32 fl. oz. Spray Dispenser, 6/cs
 34815 1 gal, 4/cs



KIMBERLY-CLARK CRITICAL TASK WIPERS

- 33330 KIMTECH PURE CL4 Critical Task Wiper, White, 11.5" x 12", 100/pk, 5 pk/cs



KIMBERLY-CLARK DELICATE TASK WIPES

KAYDRY® EX-L Delicate Task Wiper, 3-ply, POP-UP® Box, offers a unique combination of low-lint tissue, softness, and multi-ply absorbency that's perfect for a multitude of delicate tasks. Multi-ply absorbency, wipes up liquid and dust. Wipes clean, extra low-lint and extractable performance. White color.

- 34743 KIMTECH SCIENCES KAYDRY® EX-L, 12" x 12", 3-ply, White, 119/pk, 15pk/cs



7008

7020



9001

MADA DISINFECTANT/CLEANERS

- 7008 MadaCide-1 Disinfectant/Cleaner, 32 oz Spray Bottle, 12/cs
- 7009 MadaCide-1 Disinfectant/Cleaner, Gallon Bottle, 4/cs
- 7010 MadaCide-1 Disinfectant/Cleaner, 5 Gallon Bottle
- 7020 MadaCide-FD Disinfectant/Cleaner, 32 oz Spray Bottle, 12/cs
- 7021 MadaCide-FD Disinfectant/Cleaner, 1 Gallon Bottle, 4/cs
- 7022 MadaCide-FD Disinfectant/Cleaner, 2.5 Gallon Bottle
- 7023 MadaCide-FD Disinfectant/Cleaner, 5 Gallon Bottle
- 7024 MadaCide-FD Disinfectant/Cleaner, 55 Gallon Drum
- 9001 MadaClenz Plus, Gallon, 4/cs

Accessories

- 2P584 Pump For 5 Gal. & 55 Gal. MadaCide



MADA MADAWIPE-FDW WIPES

For environmental surfaces for use in hospitals, nursing homes, critical care areas. Contains isopropyl alcohol, 2-butoxyethanol, cationic surfactant and water. Safe, easy to use, economically priced. Biodegradable and non-toxic. Greater stability with longer shelf life. No rinsing necessary. Allow to air dry.

- 7031 6" x 7" Towelettes, 160/canister, 12 can/cs

METREX BASE ROLLER

The base roller is designed to help move drums around with ease.

- 10-1115 Base Roller for 15-Gallon Drums



13-1000

13-1002

13-1008

13-1024



13-1025

METREX CAVICIDE® SURFACE DISINFECTANT

A convenient, ready-to-use, intermediate-level disinfectant. Kills TB in 3 minutes and HBV, HCV, and HIV in 2 minutes. For use on nonporous surfaces. Nontoxic and nonirritating.

- 13-1000 CaviCide Gallons, 4/cs
- 13-1002 CaviCide 2 oz w/sprayer, 48/cs (special order)
- 13-1008 CaviCide 8 oz Spray, 12/cs
- 13-1024 CaviCide 24 oz Spray, 12/cs
- 13-1025 CaviCide 2.5 Gallon, 2/cs
- 13-1055 CaviCide 55 Gallon (special order)



13-1100



13-1150

METREX CAVIWIPES™ DISINFECTING TOWELETTES

A convenient, ready-to-use, intermediate-level disinfecting wipe available in two sizes to fit all your needs. Towels stay fully saturated and will not dry out during use. Effective against TB, HBV, and HIV. Towelette and CaviCide in one. For use on nonporous surfaces. Sturdy and durable, nonwoven towelette will not bunch up or tear during use.

- 13-1100 CaviWipes, 160 Wipes, 12 canisters/cs
- 13-1150 XL CaviWipes, 66 Wipes, 12 canisters/cs
- 13-1155 XL CaviWipes, Single, 50/bx, 6 bx/cs
- 13-1224 CaviWipes Flat Pack, 45/pk, 20 pk/cs

Accessories

- 13-1175 Wall Bracket For CaviWipes, 12/cs

Surface Disinfectants



METREX ENVIROCID[®] HOSPITAL SURFACE & INSTRUMENT DISINFECTANT/CLEANER

EPA registered disinfectant/cleaner kills HIV and TB. Meets OSHA regulations. Non-staining, non-corrosive formula is safe to use on all surfaces. Biodegradable. Non-aerosol. Use as an instrument pre-soak.

13-3300	Gallon Instrument Cleaner Refill, 4/cs
13-3308	8 oz Bottle Instrument Cleaner w/pump, 12/cs
13-3324	24 oz Bottle Instrument Cleaner w/sprayer, 12/cs
13-3325	2.5 Gallon Jug Instrument Cleaner w/spout, 2 btls/cs



METREX METRIGUARD[™] SURFACE DISINFECTANT

The most effective, ready-to-use, multi-purpose tuberculocidal broad spectrum, safe and compatible solution for use on the surfaces of inanimate objects. Especially useful in hospital operating rooms, emergency departments, isolation areas, neonatal units, laboratories and other critical care areas. Safe for use on medical/surgical equipment.

10-7506	MetriGuard 32 oz Spray, 12/cs
---------	-------------------------------



OCP04-128

OCS12-024

MICRO-SCIENTIFIC OPTI-CIDE3[®] DISINFECTANT

A 3 minute, highly effective cleaner and disinfectant for use in intensive care and high-risk patient care areas, surgical suites, infant care units, plasma pheresis facilities and other areas where strict environmental control of cross contamination is critical. May be applied directly to surfaces or used as an immersion solution.

OCP01-7040	55 Gallon Drum Opti-Cide3 Disinfectant
OCP02-320	2 1/2 Gallon w/spigot Opti-Cide3 Disinfectant, 2/cs
OCP04-128	1 Gallon Opti-Cide3 Disinfectant, Pour Bottle, 4/cs
OCS12-008	8 oz Opti-Cide3 Disinfectant, Finger Pump Spray Bottle, 12/cs
OCS12-024	24 oz Opti-Cide3 Disinfectant, Spray Bottle, 12/cs



PDI Q85084

Q85084

PDI SANI-CLOTH PLUS[®] DISINFECTANT/CLEANER CLOTH

This new and improved cloth is effective against gram positive and gram negative bacteria and viruses. Kills HIV in thirty (30) seconds and TB in five (5) minutes.

H54082	Large, 5" x 8", 50 Individual Packs/bx, 10 bx/cs
PDI Q85084	8" x 14" X-Large Sani-Cloth Plus Wipes, 65/canister, 6 can/cs
PDI Q89072	Sani-Cloth Plus [®] , Large, 6" x 6 3/4", 160/canister, 12 canisters/cs
Q85084	8" x 14" X-Large Sani-Cloth Plus Wipes, 65/canister, 6 can/cs
Q89072	Sani-Cloth Plus [®] , Large, 6" x 6 3/4", 160/canister, 12 canisters/cs
U36495	X-Large, 11.5" x 11.75", 50 Individual Packs/bx, 3 bx/cs



H21082

PDI Q08472

PDI Q85484



Q08472

Q85484

U22495

PDI SANI-CLOTH[®] HB HARD SURFACE CLEANER/ DISINFECTANT WIPE

For disinfecting inanimate surfaces to reduce the risks associated with cross-contamination. Kills over 100 microorganisms. Effective against Methicillin Resistant Staphylococcus aureus. Kills Vancomycin Resistant Enterococcus faecalis. Effective against Escherichia coli. Kills HIV-1. Alcohol free.

H21082	Sani-Cloth HB Wipes, Individual, Large, 50/bx, 10 bx/cs
PDI Q08472	6" x 6 3/4" Large Sani-Cloth HB Wipes, 160/tub, 12 tubs/cs
PDI Q85484	8" x 14" X-Large Sani-Cloth HB Wipes, 65/canister, 6 can/cs
Q08472	Sani-Cloth HB Wipes, Large, 160/tub, 12 tubs/cs
Q85484	8" x 14" X-Large Sani-Cloth HB Wipes, 65/canister, 6 can/cs
U22495	Sani-Cloth HB Wipes, Individual, X-Large, 50/bx, 3 bx/cs

PDI SANI-WIPE[™] NON-RINSE FOOD CONTACT HARD-SURFACE SANITIZING WIPE

Especially designed for use on hard, non-porous, food contact and food preparation surfaces where the control of cross contamination is of prime importance. Kills 99.999% of Staphylococcus aureus, Escherichia coli, Listeria monocytogenes, and Shigella boydii in 60 seconds on food contact surfaces. 99.9 effective in 5 minutes against Staphylococcus aureus, Salmonella choleraesuis, and Klebsiella pneumoniae on non-food contact surfaces. Provides quick and easy protection against bacteria for both customers and employees. Eliminates airborne food contamination hazards associated with sprays. No mixing or measuring required. No need to store or handle large bulky containers. Eliminates hard water issues. Easy to use. Just wipe and let dry to sanitize surface.

Q94384	7.75" x 10.5" Sanitizing Wipes, 100/can, 6 can/cs
--------	---



SULTAN LYSOL® I.C.™ BRAND DISINFECTANT SPRAY

Disinfects hard, nonporous surfaces. Tuberculocidal, virucidal, fungicidal and bactericidal. Effective against HIV-1 and hydrophilic viruses, such as Poliovirus Type 1 and Hepatitis A Virus. ACC-U-SOL® Sprayer produces a wetter spray, enhancing surface coverage.

95029 ACC-U-SOL® Disinfectant Spray, 19 oz, 12/cs
SUL 95029 ACC-U-SOL® Disinfectant Spray, 19 oz, 12/cs



SULTAN LYSOL® I.C.™ BRAND FOAMING DISINFECTANT CLEANER

Ready-to-use quaternary formula cleans, disinfects and deodorizes. Effective against HIV-1, Poliovirus Type 1, Staphylococcus, Salmonella and Pseudomonas on hard, nonporous surfaces. Contains no harsh acids, abrasives or bleach. Clings to vertical surfaces. Fresh, pleasant fragrance.

95524 Foaming Disinfectant Cleaner, 24 oz, 12/cs
SUL 95524 Foaming Disinfectant Cleaner, 24 oz, 12/cs



SULTAN LYSOL® I.C.™ QUATERNARY DISINFECTANT CLEANER

Concentrate. Effective cleaner and disinfectant that kills odor-causing bacteria. Highly concentrated, cost-effective formula dilutes at 1:256. Virucidal, fungicidal and bactericidal. Effective against HIV-1, VRE, MRSA and other gram-positive as well as gram-negative microorganisms. Neutral pH in use.

74983 Quaternary Disinfectant Cleaner (concentrate), Gallon, 4/cs
SUL 74983 Quaternary Disinfectant Cleaner (concentrate), Gallon, 4/cs



SULTAN PROFESSIONAL AMPHYL® DISINFECTANT CLEANER

Concentrate. Economical and effective concentrate dilutes at 1:200. Germicidal efficacy meets requirements of OSHA Bloodborne Pathogen Standard for Decontamination. Tuberculocidal, virucidal, fungicidal and bactericidal. Effective against HIV-1. When used properly, effectively cleans floors without damaging finish. pH level of 10.5 in use.

95101 Disinfectant Cleaner (concentrate), Gallon, 4/cs
SUL 95101 Disinfectant Cleaner (concentrate), Gallon, 4/cs

Sultan®

Trusted choice for infection control.



For more information, please visit
www.sultanmedical.com

Surface Disinfectants - Trays

SULTAN PROFESSIONAL AMPHYL® DISINFECTANT DEODORANT SPRAY

Effective disinfectant that kills odor-causing bacteria at their source. Tuberculocidal, virucidal, fungicidal and bactericidal. Effective against HIV-1 and hydrophilic viruses such as Poliovirus Type 1 and Hepatitis A Virus. Cost-effective.

98300 Disinfectant Deodorant Spray, 13 oz, 12/cs
SUL 98300 Disinfectant Deodorant Spray, 13 oz, 12/cs

SULTAN PROFESSIONAL AMPHYL® HOSPITAL BULK DISINFECTANT CLEANER

Concentrate. Phenolic-based disinfectant that dilutes 1:100 for broad-spectrum use and 1:50 for hospital disinfection. Virucidal, fungicidal, bactericidal and tuberculocidal. Sanitizes laundry, linens, blankets and cloth diapers. Prevents odors and growth of mold and mildew.

92500 Hospital Bulk Disinfectant Cleaner (concentrate), Gallon, 4/cs
SUL 92500 Hospital Bulk Disinfectant Cleaner (concentrate), Gallon, 4/cs

SULTAN PROFESSIONAL LYSOL® BRAND DISINFECTANT FOAM CLEANER

Kills Staph, Salmonella, Pseudomonas and other harmful germs on hard, nonporous surfaces. Effective against HIV-1 (AIDS Virus). Cleans, shines, disinfects and deodorizes. Prevents growth of damaging mold and mildew on hard nonporous surfaces. Rich foam contains detergents and other grease-cutting agents and clings to vertical surfaces. Unique aerosol valve allows spraying from any position - even upside down. Meets AOAC efficacy standards for hospital aerosol disinfectants.

72775 Disinfectant Foam Cleaner, 24 oz, 12/cs
SUL 72775 Disinfectant Foam Cleaner, 24 oz, 12/cs

SULTAN PROFESSIONAL LYSOL® BRAND DISINFECTANT HEAVY DUTY BATHROOM CLEANER

Concentrate. Hospital disinfectant cleaner for all restroom cleaning needs. Deep-cleaning action penetrates tough soils including body oils and soap scum. Cleans, disinfects and deodorizes with a fresh lime scent. Makes up to 32 gallons for general cleaning and disinfection (broad-spectrum disinfectant at 1:32). Makes up to 8 gallons for heavy-duty cleaning and hospital disinfection (hospital disinfectant at 1:8).

94201 Disinfectant Heavy Duty Bathroom Cleaner (concentrate), Gallon, 4/cs
SUL 94201 Disinfectant Heavy Duty Bathroom Cleaner (concentrate), Gallon, 4/cs

SULTAN PROFESSIONAL LYSOL® BRAND DISINFECTANT SPRAY

Effective against HIV-1 (AIDS Virus) and hydrophilic viruses such as Poliovirus Type 1 and Hepatitis A. Kills germs and eliminates odors on hard, nonporous surfaces. Formula is tuberculocidal, virucidal, fungicidal and bactericidal. Prevents odors and growth of damaging mold and mildew. Meets AOAC efficacy standards for hospital aerosol disinfectants. Meets the requirements of the OSHA Bloodborne Pathogen Standard for Decontamination.

74276 Disinfectant Spray, Country Scent, 19 oz, 12/cs
74650 Disinfectant Spray, Original Scent, 19 oz, 12/cs
74675 Disinfectant Spray, Fresh Scent, 19 oz, 12/cs
74828 Disinfectant Spray, Crisp Linen Scent, 19 oz, 12/cs
SUL 74276 Disinfectant Spray, Country Scent, 19 oz, 12/cs
SUL 74650 Disinfectant Spray, Original Scent, 19 oz, 12/cs
SUL 74675 Disinfectant Spray, Fresh Scent, 19 oz, 12/cs
SUL 74828 Disinfectant Spray, Crisp Linen Scent, 19 oz, 12/cs

HC PRO SURFACE & MEDICAL INSTRUMENT DECONTAMINATION TRAINING VIDEO

Infection control continues to top the list of safety concerns in the healthcare workplace. One crucial component of infection control and prevention programs is the proper decontamination and disinfection of medical instruments and surfaces. According to CDC guidelines, OSHA rules, and JCAHO standards, healthcare facilities must train staff to ensure effective and safe decontamination practices.

VSMDTVDVD Training Video, DVD

GRAHAM PROFESSIONAL SANEK™ DISPOSABLE WIPES

Disinfecting hard surface wipe with a kill rate 5 minutes. For use in physician offices, hospitals, emergency medical settings, labs, clinics, dental offices, health clubs, schools, day care and veterinary facilities. Effective against MRSA, Staph, HIV, TB, Salmonella, Influenza A, Ecoli, etc.

55636 Wipe, Hard Surface, Disinfecting, White, 6" x 6.75", 160 wipes/can, 12 can/cs



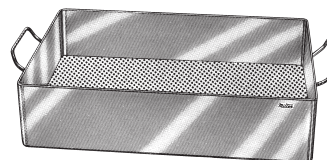
SAFETEC SANIZIDE PLUS™ DISINFECTANT WIPES

27502 Canister Holder, 160 ct
27503 Canister Holder, 40 ct
34823 Sanizide Plus™ Germicidal Wipe Canister, 160 ct, 12/cs
34824 Sanizide Plus™ Germicidal Wipe Canister, 40 ct, 12/cs
34826 Individual Wrapped, 50/bx

J&J/ASP UNIVERSALLY COMPATIBLE INSTRUMENT SOAK TRAYS

Compatible with CIDEX Activated solution, CIDEX PLUS solution, CIDEX OPA solution, ENZOL enzymatic detergent. Can be sterilized/decontaminated using steam, ethylene oxide, and STERRAD sterilization systems.

82010 Tray System 13" x 7" x 5", w/1tray, Lid & Liner (Inside dimensions are exactly 1" less than what is listed)
82016 Tray System 20" x 7" x 5", w/1tray, Lid & Liner (Inside dimensions are exactly 1" less than what is listed)
82027 Tray System 29" x 8.5" x 5", w/1tray, Lid & Liner (Inside dimensions are exactly 1" less than what is listed)
82032 Tray System 19"D x 8.5", w/1tray & lid (Inside dimensions are exactly 1" less than what is listed)
82076 Tray System 23" x 15" x 5.5", w/1 tray, Lid & Liner (Inside dimensions are exactly 1" less than what is listed)



MILTEX STERILIZING TRAYS WITH HANDLES

Made of strong stainless steel with rolled safety edges. Perforated bottoms assure complete steam penetration with no build-up of condensation.

3-499 10" x 6 1/2" x 2 1/2" Tray
3-500 10" x 10 1/2" x 3 1/2" Tray
3-501 15" x 10 1/2" x 3 1/2" Tray
3-502 20" x 10 1/2" x 3 1/2" Tray



MILTEX STERILIZATION CONTAINER SYSTEM

Container lid and bottom are both of a one-piece construction and have a uniform, anodized aluminum alloy finish. Lightweight yet durable to accommodate weight loads of surgical instrumentation. Handles stop at 90 degrees to aid lifting; low profile latch allows simple and secure lid closing. Retention plate employs an easy "click and lock" closure over disposable, quick-to-change filter. Dual silicone gaskets within retention plate and around perimeter ensure complete container and filter seal. Baskets are constructed with solid wire mesh to allow for maximum ultrasonic cleaning. Handles can be positioned to assist with secure and comfortable grasp for removal under sterile conditions.

3-5100-10	1/2 Size (11 1/4" x 11"), Vacuum Sterilizer Container w/lid, Solid Bottom, 4" Height
3-5100-13	1/2 Size (11 1/4" x 11"), Vacuum Sterilizer Container w/lid, Solid Bottom, 5 1/3" Height
3-5100-15	1/2 Size (11 1/4" x 11"), Vacuum Sterilizer Container w/lid, Solid Bottom, 6" Height
3-5172-05	1/2 Size Wire Basket, 2" Height
3-5172-07	1/2 Size Wire Basket, 3" Height
3-5172-10	1/2 Size Wire Basket, 4" Height
3-5300-10	3/4 Size (18 1/4" x 11"), Vacuum Sterilizer Container w/lid, Solid Bottom, 4" Height
3-5300-13	3/4 Size (18 1/4" x 11"), Vacuum Sterilizer Container w/lid, Solid Bottom, 5 1/3" Height
3-5300-15	3/4 Size (18 1/4" x 11"), Vacuum Sterilizer Container w/lid, Solid Bottom, 6" Height
3-5372-05	3/4 Size Wire Basket, 2" Height
3-5372-07	3/4 Size Wire Basket, 3" Height
3-5372-10	3/4 Size Wire Basket, 4" Height
3-5500-10	Full Size (23" x 11"), Vacuum Sterilizer Container w/lid, Solid Bottom, 4" Height
3-5500-13	Full Size (23" x 11"), Vacuum Sterilizer Container w/lid, Solid Bottom, 5 1/3" Height
3-5500-15	Full Size (23" x 11"), Vacuum Sterilizer Container w/lid, Solid Bottom, 6" Height
3-5572-05	Full Size Wire Basket, 2" Height
3-5572-07	Full Size Wire Basket, 3" Height
3-5572-10	Full Size Wire Basket, 4" Height
3-5900-15	Disposable Filters, Single Use, Round, 7 1/2", 1000/bx
3-5930-00	Indicator Cards for use in gas or steam, 250/bx
3-5935-00	Tamper Evident Locks, Plastic, Blue, 1000/bx
3-5940-01	ID Tag, Silver
3-5940-02	ID Tag, Blue
3-5940-03	ID Tag, Red
3-5940-04	ID Tag, Gold
3-5940-05	ID Tag, Green
3-5940-06	ID Tag, Black
3-6100-00	Container Lid Only, 1/2 Size
3-6300-00	Container Lid Only, 3/4 Size
3-6500-00	Container Lid Only, Full Size



MEDICAL CHEMICAL WAVICIDE-01® SOAKING TRAYS

Designed for use with WAVICIDE®01, these trays have a fitted lid as well as a drain shelf. They are fully autoclavable to 300°F, virtually unbreakable and chemically resistant.

1210	Soaking Tray, 12" x 10" x 6", Small Clear, NOT AUTOCLAVABLE
2711	Soaking Tray, 9.75" x 6.75" x 4.5" + 3.5", Small Blue w/basket
2722	Soaking Tray, 3 3/8" x 10" x 4.75" + 1", Small Gray, NOT AUTOCLAVABLE

POLAR WARE DIVIDED FULL SIZE INSTRUMENT TRAY

T2022D	Two Compartment Pan, Full Size
--------	--------------------------------



POLAR WARE INSTRUMENT TRAYS & SOLID FLAT COVERS

Wide assortment of heavy duty, seamless trays have coved corners for easy sterilization. Covers have recessed strap handles for ease in handling and storing.

1002	10" x 6 1/2" x 2" Instrument Tray (Cover Sold Separately)
1002-2	Cover Fits Tray 1002
1082-2	Cover Fits Tray E1082
1202	12 1/4" x 7 3/4" x 2 1/4" Instrument Tray (Cover Sold Separately)
1202-2	Cover Fits Tray 1202
1650-2	Cover Fits Tray E1654 & E1650
2302-2	Cover Fits Tray E2302, E2304, E2306
43	5 3/8" x 4" x 2 5/8" Instrument Tray (Cover Sold Separately)
43-2	Cover Fits Tray 43
63	6 1/8" x 6 1/8" x 2 7/8" Instrument Tray (Cover Sold Separately)
63-2	Cover Fits Tray 63
902-2	Cover Fits Tray E902 & E904
952-2	Cover Fits Tray 952 & 953
E1082	10" x 8 1/4" x 2 1/2" Instrument Tray (Cover Sold Separately)
E1650	16 1/2" x 10" x 2 1/2" Instrument Tray (Cover Sold Separately)
E1654	16 1/2" x 10" x 4" Instrument Tray (Cover Sold Separately)
E2302	13 7/8" x 12 7/8" x 2 1/2" Instrument Tray (Cover Sold Separately)
E2304	13 7/8" x 12 7/8" x 4" Instrument Tray (Cover Sold Separately)
E2306	13 7/8" x 12 7/8" x 6" Instrument Tray (Cover Sold Separately)
E902	6 7/8" x 4 1/4" x 2" Instrument Tray (Cover Sold Separately)
E904	6 7/8" x 4 1/4" x 4" Instrument Tray (Cover Sold Separately)

POLAR WARE INSTRUMENT TRAYS AND FLAT/SOLID COVERS

1311-2	Cover fits above six trays, Heavy Weight (20 ga.)
2000-2	Cover fits above six trays, Heavy Weight (20 ga.)
302-2	Cover fits above six trays, Heavy Weight (20 ga.)
402-2	Cover fits above six trays, Heavy Weight (20 ga.)
602-2	Cover fits above six trays, Heavy Weight (22 ga.)
E06062	6 7/8" x 6 3/8" x 2 1/2" Instrument Tray (Cover Sold Separately), Standard Weight (22 ga.)
E06064	6 7/8" x 6 3/8" x 4" Instrument Tray (Cover Sold Separately), Standard Weight (22 ga.)
E06066	6 7/8" x 6 3/8" x 6" Instrument Tray (Cover Sold Separately), Standard Weight (22 ga.)
E10062	10 3/8" x 6 3/8" x 2 1/2" Instrument Tray (Cover Sold Separately), Standard Weight (22 ga.)
E10064	10 3/8" x 6 3/8" x 4" Instrument Tray (Cover Sold Separately), Standard Weight (22 ga.)
E10066	10 3/8" x 6 3/8" x 6" Instrument Tray (Cover Sold Separately), Standard Weight (22 ga.)
E12062	12 3/4" x 6 7/8" x 2 1/2" Instrument Tray, 22 Gauge (Cover Sold Separately), Standard Weight (22 ga.)
E12064	12 3/4" x 6 7/8" x 4" Instrument Tray, 22 Gauge (Cover Sold Separately), Standard Weight (22 ga.)
E12066	12 3/4" x 6 7/8" x 6" Instrument Tray, 22 Gauge (Cover Sold Separately), Standard Weight (22 ga.)
E12102	12 3/4" x 10 3/8" x 2 1/2" Instrument Tray, 22 Gauge (Cover Sold Separately), Standard Weight (22 ga.)
E12104	12 3/4" x 10 3/8" x 4" Instrument Tray, 22 Gauge (Cover Sold Separately), Standard Weight (22 ga.)
E12106	12 3/4" x 10 3/8" x 6" Instrument Tray, 22 Gauge (Cover Sold Separately), Standard Weight (22 ga.)
E20122	20 3/4" x 12 3/4" x 2 1/2" Instrument Tray, 22 Gauge (Cover Sold Separately), Standard Weight (22 ga.)
E20124	20 3/4" x 12 3/4" x 4" Instrument Tray, 22 Gauge (Cover Sold Separately), Standard Weight (22 ga.)
E20126	20 3/4" x 12 3/4" x 6" Instrument Tray, 22 Gauge (Cover Sold Separately), Standard Weight (22 ga.)
S06062	6 7/8" x 6 3/8" x 2 1/2" Instrument Tray, Heavyweight 20 Gauge (Cover Sold Separately), Heavy Weight (20 ga.)
S06064	6 7/8" x 6 3/8" x 4" Instrument Tray, Heavyweight 20 Gauge (Cover Sold Separately), Heavy Weight (20 ga.)
S06066	6 7/8" x 6 3/8" x 6" Instrument Tray, Heavyweight 20 Gauge (Cover Sold Separately), Heavy Weight (20 ga.)
S10062	10 3/8" x 6 3/8" x 2 1/2" Instrument Tray, Heavyweight 20 Gauge (Cover Sold Separately), Heavy Weight (20 ga.)
S10064	10 3/8" x 6 3/8" x 4" Instrument Tray, Heavyweight 20 Gauge (Cover Sold Separately), Heavy Weight (20 ga.)
S10066	10 3/8" x 6 3/8" x 6" Instrument Tray, Heavyweight 20 Gauge (Cover Sold Separately), Heavy Weight (20 ga.)
S12062	12 3/4" x 6 7/8" x 2 1/2" Instrument Tray, 20 Gauge (Cover Sold Separately), Heavy Weight (20 ga.)
S12064	12 3/4" x 6 7/8" x 4" Instrument Tray, 20 Gauge (Cover Sold Separately), Heavy Weight (20 ga.)
S12066	12 3/4" x 6 7/8" x 6" Instrument Tray, 20 Gauge (Cover Sold Separately), Heavy Weight (20 ga.)
S12102	12 3/4" x 10 3/8" x 2 1/2" Instrument Tray, 20 Gauge (Cover Sold Separately), Heavy Weight (20 ga.)
S12104	12 3/4" x 10 3/8" x 4" Instrument Tray, 20 Gauge (Cover Sold Separately), Heavy Weight (20 ga.)
S12106	12 3/4" x 10 3/8" x 6" Instrument Tray, 20 Gauge (Cover Sold Separately), Heavy Weight (20 ga.)
S20122	20 3/4" x 12 3/4" x 2 1/2" Instrument Tray, 20 Gauge (Cover Sold Separately), Heavy Weight (20 ga.)
S20124	20 3/4" x 12 3/4" x 4" Instrument Tray, 20 Gauge (Cover Sold Separately), Heavy Weight (20 ga.)
S20126	20 3/4" x 12 3/4" x 6" Instrument Tray, 20 Gauge (Cover Sold Separately), Heavy Weight (20 ga.)

POLAR WARE INSTRUMENT TRAYS WITHOUT COVERS

Flat bottoms, open beads and coved corners. Stainless steel.

4V	8 3/4" x 4 5/8" x 3 1/8" Instrument Tray w/very slight flange
6V	10 5/16" x 5 1/2" x 4" Instrument Tray w/very slight flange

**POLAR WARE OBLONG INSTRUMENT/DRYING TRAYS**

Coved corners and large, open beads which allow for easy handling, stacking and cleaning. Stainless steel.

10F	10" x 6 1/2" x 3/4" Instrument Tray w/rolled bead
13F	13 11/16" x 9 13/16" x 3/4" Instrument Tray w/rolled bead
1520	21 1/4" x 16 1/4" x 7/8" Instrument Tray w/rolled bead
1525	25" x 15" x 5/8" Instrument Tray w/flat flange
15F	15 1/8" x 10 5/8" x 3/4" Instrument Tray w/rolled bead
17F	17" x 11 5/8" x 3/4" Instrument Tray w/rolled bead
19F	19 1/8" x 12 5/8" x 3/4" Instrument Tray w/rolled bead
25F	25" x 20" x 5/8" Instrument Tray w/rolled bead
E12101	12 3/4" x 10 3/8" x 1 1/4" Instrument Tray
E20121	20 3/4" x 12 3/4" x 1 1/4" Instrument Tray

POLAR WARE PERFORATED INSTRUMENT TRAYS

1/4" diameter holes in tray bottom and sides enhance sterilizing liquid flow. Tray edges are rounded to aid in handling. Stainless steel.

P12101	12 3/4" x 10 3/8" x 1 1/4" Instrument Tray
P12102	12 3/4" x 10 3/8" x 2 1/2" Instrument Tray
P12104	12 3/4" x 10 3/8" x 4" Instrument Tray
P12106	12 3/4" x 10 3/8" x 6" Instrument Tray
P20121	20 3/4" x 12 3/4" x 1 1/4" Instrument Tray
P20122	20 3/4" x 12 3/4" x 2 1/2" Instrument Tray
P20124	20 3/4" x 12 3/4" x 4" Instrument Tray
P20126	20 3/4" x 12 3/4" x 6" Instrument Tray

POLAR WARE PMP SERIES PERFORATED INSTRUMENT TRAYS

Constructed of heavy duty 304 18-8 stainless steel. Finished to provide a tough, clean and corrosion-resistant surface for long term use in a variety of applications.

1002-HPT	10" x 6 1/2" x 2" Instrument Tray, High-Sided Perforated
10F-PMT	10" x 6 1/2" x 3/4" Instrument Tray, Perforated Mayo
1202-HPT	12 1/4" x 7 3/4" x 2 1/4" Instrument Tray, High-Sided Perforated
13F-PMT	13 11/16" x 9 13/16" x 3/4" Instrument Tray, Perforated Mayo
15F-PMT	15 1/8" x 10 5/8" x 3/4" Instrument Tray, Perforated Mayo
17F-PMT	17" x 11 5/8" x 3/4" Instrument Tray, Perforated Mayo
19F-PMT	19 1/8" x 12 5/8" x 3/4" Instrument Tray, Perforated Mayo
952-HPT	8 7/8" x 5" x 2" Instrument Tray, High-Sided Perforated
E1650-HPT	16 1/2" x 10" x 2 1/2" Instrument Tray, High-Sided Perforated
S12102-HPT	12 3/4" x 10 3/8" x 2 1/2" Instrument Tray, High-Sided Perforated
S20122-HPT	20 3/4" x 12 3/4" x 2 1/2" Instrument Tray, High-Sided Perforated

POLAR WARE STERILIZATION TRAYS (HOT/COLD) AND COVER

Can be used for either hot or cold sterilization. Covers feature recessed strap handle for ease and safety in transporting, handling and storing. Stainless steel.

2006-2	Solid Cover fits above pans
E20062	Half Size Long 22 Gauge 2-1/2" Deep, 20-3/4" x 6-3/8" x 2-1/2", 3-1/2 Quarts
E20064	Half Size Long 22 Gauge 4" Deep, 20-3/4" x 6-3/8" x 4", 5-1/4 Quarts
E20066	Half Size Long 22 Gauge 6" Deep, 20-3/4" x 6-3/8" x 6", 8-3/4 Quarts
S20062	Half Size Long 20 Gauge 2-1/2" Deep, 20-3/4" x 6-3/8" x 2-1/2", 3-1/2 Quarts
S20064	Half Size Long 20 Gauge 4" Deep, 20-3/4" x 6-3/8" x 4", 5-1/4 Quarts
S20066	Half Size Long 20 Gauge 6" Deep, 20-3/4" x 6-3/8" x 6", 8-3/4 Quarts

SULTAN PROSOAK STERILIZING & DISINFECTING TRAY

75159	PROSOAK Sterilizing & Disinfecting Tray
75161	Prosoak Sterilizing & Disinfecting Tray, Junior



4254



4261

TECH-MED INSTRUMENT TRAYS

Stainless steelware is constructed without seams to prevent bacteria growth and to allow for easy cleaning.

4254	8 1/2" x 3" x 1 1/2" Instrument Tray w/strap handle
4255	8 7/8" x 5" x 2" Instrument Tray w/strap handle
4256	12 1/8" x 7 5/8" x 2 1/8" Instrument Tray w/recessed grip
4257	17" x 4" x 2 1/8" Instrument Tray w/strap handle
4258	8 7/8" x 5" x 2" Instrument Tray w/o cover
4259	12 1/8" x 7 5/8" x 2 1/8" Instrument Tray w/o cover
4261	13 5/8" x 9 3/4" x 5/8" Flat Instrument Tray
4262	15 1/8" x 10 1/2" x 5/8" Flat Instrument Tray
4263	17 1/8" x 11 5/8" x 5/8" Flat Instrument Tray
4264	19 1/8" x 12 1/2" x 5/8" Flat Instrument Tray



M150-001



M250-001



M550-001

MIDMARK SONICLEAN® ULTRASONIC CLEANER

No one will argue that ultrasonic cleaning is the fastest, most consistent and safest method of cleaning instruments and components. But, because ultrasonic cleaners emit a high pitched sound, no one ever accused them of being quiet until now. Other ultrasonic cleaners use a standard, slim wafer transducer that limits the maximum sound pressure that can be generated 2-3 watt/sq in. An industrial type ultrasonic stack transducer that results in a cleaner capable of reaching 12-15 watts/sq in. This superior acoustic pressure generated by the stack transducer, coupled with Soniclean's Overlapping Wave Frequency (OWF) technology, produces powerful cavitation. More power in the tank translates to cleaning your instruments quicker and more efficiently, internal safety baskets sold separately. CSA, TUV, FCC and CE; ISO 9001 registered.

M150-001	Soniclean® M150 Ultrasonic Cleaner, Tank Capacity: 1.5 gal, Tank Size: 11.5" x 6" x 6", 12 lbs
M250-001	Soniclean® M250 Ultrasonic Cleaner, Tank Capacity: 2.5 gal, Tank Size: 11.5" x 9.5" x 6", 14 lbs
M550-001	Soniclean® M550 Ultrasonic Cleaner, Tank Capacity: 5.5 gal, Tank Size: 19.5" x 11.5" x 6", 26 lbs



CSU1



CSU3



CSU1AK

TUTTNAUER CLEAN & SIMPLE ULTRASONIC CLEANERS

Manufactured with only the highest quality components. These machines provide 60 kHz of quiet cleaning power which is less aggressive to instruments while still removing all surface contamination. The contemporary design and quiet operation compliment any office environment. The one gallon holds a standard selection of instruments or two half size cassettes. The three gallon holds three full size cassettes.

CSU1	One Gallon Ultrasonic Cleaner
CSU1H	One Gallon Ultrasonic Cleaner w/heater
CSU3	Three Gallon Ultrasonic Cleaner
CSU3H	Three Gallon Ultrasonic Cleaner w/heater

Accessories

CSU1AK	Accessory Kit For One Gallon Cleaner
CSU1B	SS Basket For One Gallon Cleaner
CSU3AK	Accessory Kit For Three Gallon Cleaner
CSU3B	SS Basket For Three Gallon Cleaner

L&R PC3 ULTRASONIC CLEANING SYSTEM

The perfect compact ultrasonic cleaning machine. Its size makes it extremely versatile for use directly in the operator, sterilization area or laboratory. The quiet operation and aggressive cleaning strength make it ideal for cleaning burs, proph angles, partials, temporaries, splints, crowns, and other small objects. The stainless steel tank, cover and automatic tuning are standard features.

1172	PC3 Ultrasonic Cleaning System, Quartz White
------	--

L&R QUANTREX® ULTRASONIC CLEANING SYSTEMS

Standard features include a stainless steel cover, automatic tuning and a pilot light. The Quantrex 140 and larger machines are equipped with a stainless steel, multi-position drain for convenient, easy solution disposal. A 30-minute/hold timer allows you to preset the cleaning cycle duration, or select continuous cleaning. All machines have earned worldwide approvals - CSA, LA, TUV, FTZ, GS Mark and meet FCC requirements. Each system is backed by L&R's exclusive Double Warranty. The entire unit is covered for defects in materials and workmanship for a period of 2 1/2 years. The housing is warranted for five years and the tank-to-transducer bonding is covered for 10 years.

307	Quantrex 90 Ultrasonic Cleaning System w/timer
311	Quantrex 140 Ultrasonic Cleaning System w/timer & drain
317	Quantrex 210 Ultrasonic Cleaning System w/timer & drain
319	Quantrex 280 Ultrasonic Cleaning System w/timer & drain
606	Quantrex 90 Ultrasonic Cleaning System w/timer & heat
610	Quantrex 140 Ultrasonic Cleaning System w/timer, heat & drain
617	Quantrex 210 Ultrasonic Cleaning System w/timer, heat & drain
619	Quantrex 280 Ultrasonic Cleaning System w/timer, heat & drain
721	Quantrex 360 Ultrasonic Cleaning System w/timer & drain
722	Quantrex 360 Ultrasonic Cleaning System w/timer, heat & drain
725	Quantrex 310 Ultrasonic Cleaning System w/timer & drain
726	Quantrex 310 Ultrasonic Cleaning System w/timer, heat & drain
727	Quantrex 650 Ultrasonic Cleaning System w/timer & drain
728	Quantrex 650 Ultrasonic Cleaning System w/timer, heat & drain

Ultrasonic Cleaning

L&R SPECIAL ACCESSORIES

10254	Bur Tray
10576	Small Carrier Tray
11193	Small Carrier Tray Cover
11194	Large Carrier Tray
11195	Large Carrier Tray
1131	310R Rinse Tank
1159	150R Rinse Tank
1204	360R Rinse Tank
1208	650R Rinse Tank
19357	1000 Rack
40897	Large Accessory Rack
40898	Small Accessory Rack

Accessories

40896	Tweezers
-------	----------

L&R STAINLESS STEEL AUXILIARY PANS

Use as a second cleaning tank by inserting in main ultrasonic tank. Can also be used as a rinse/holding tank. For Q90 and larger units.

10634	Stainless Steel Auxiliary Pan For 140, 150R, 2014
10636	Stainless Steel Auxiliary Pan For 280
11032	Stainless Steel Auxiliary Pan For Q90
11093	Stainless Steel Auxiliary Pan For Q210
12267	Stainless Steel Auxiliary Pan For 360, 360R,
13102	Stainless Steel Auxiliary Pan For 650, 650R
17740	Stainless Steel Auxiliary Pan For 650, 650R
19366	Stainless Steel Auxiliary Pan For 200



L&R STAINLESS STEEL DRAINING BASKETS

High-grade construction ensures long use. Allows more effective cleaning, convenience and safety due to the hands-free procedure. The solid side baskets are designed for the Q140 and larger systems.

10140	Stainless Steel Mesh Draining Basket For Q210
10141	Stainless Steel Mesh Draining Basket For 280, 360, 360R
10632	Stainless Steel Solid Side Draining Basket For 140, 150R, 2014
11086	Stainless Steel Mesh Draining Basket For Q90
11088	Stainless Steel Mesh Draining Basket For 140, 150R, 2014
13329	Stainless Steel Mesh Draining Basket For PC-3
13518	Stainless Steel Solid Side Draining Basket For 310, 310R, Full Size Basket
15154	Stainless Steel Solid Side Draining Basket For Q210
15155	Stainless Steel Solid Side Draining Basket For 288, Full Size Basket
17739	Stainless Steel Mesh Draining Basket For 650, 650R, 1/2 Size
17953	Stainless Steel Solid Side Draining Basket For 650, 650R, 1/2 Size Basket
17954	Stainless Steel Solid Side Draining Basket For 650, 650R, Full Size Basket
18202	Stainless Steel Solid Side Draining Basket For 310, 310R, 1/2 Size Basket
18666	Stainless Steel Solid Side Draining Basket For 200, Full Size Basket
18670	Stainless Steel Solid Side Draining Basket For 200, 3/4 Size Basket
18676	Stainless Steel Solid Side Draining Basket For 360, 360R, Full Size Basket
19103	Stainless Steel Mesh Draining Basket For 200
19355	Stainless Steel Solid Side Draining Basket For 1000, 1/2 Size
19620	Stainless Steel Solid Side Draining Basket For 1000, Full Size

L&R STAINLESS STEEL TANK COVERS

10409	310, 310R Tank Cover
11832	PC-3 Tank Cover
12182	90 Tank Cover
12184	140, 150R, 2014 Tank Cover
12188	210, 200 Tank Cover
12210	280, 360, 360R Tank Cover
15157	650, 650R Tank Cover
19286	1000 Tank Cover



AG902



AG910



AG916



AG917

L&R SWEEPZONE AG® ULTRASONIC CLEANING SYSTEMS

Constructed with revolutionary AgION™ antimicrobial coated stainless steel wrappers. Senses cleaning load, solution level and voltage fluctuations. Automatically adjusts to create consistent cleaning power. Special cleaning wave of $\pm 2\text{kHz}$ energy which sweeps back and forth through the tank. Provides complete cavitation in the SweepZone. Cleaning wave reaches all corners of the machine for uniform cleaning without hot spots or weak areas. Aggressive action creates more powerful cleaning. All units include stainless steel cover. "R" models are recessed.

AG902	SweepZone Ag200 w/timer & drain
AG903	SweepZone Ag200 w/timer, drain, & heater
AG908	SweepZone Ag360 w/timer & drain
AG909	SweepZone Ag360 w/timer, drain, & heater
AG910	SweepZone Ag310 w/timer & drain
AG911	SweepZone Ag310 w/timer, drain, & heater
AG912	SweepZone Ag650 w/timer & drain
AG913	SweepZone Ag650 w/timer, drain, & heater
AG914	SweepZone Ag150R
AG915	SweepZone Ag360R
AG916	SweepZone Ag310R
AG917	SweepZone Ag650R
AG918	SweepZone Ag1000 w/timer & drain
AG919	SweepZone Ag1000 w/timer, drain, & heater

L&R SWEEPZONE™ ULTRASONIC CLEANING SYSTEMS ACCESSORIES

- 1132 Accessory Kit For 650, 650R, 1/2 Size Basket & Cover
- 1214 Accessory Kit For 360 & 360R, Includes: 1 Solid Side Basket, 1 Positioning Cover, 4-600ml Beakers Complete, 1 Bur Box & 1 Bur Tray
- 19721 Basket Suspension Bracket
- 402 Accessory Kit For 90, Includes: 1 Mesh Basket, 1-Positioning cover, 1-600ml Beaker Complete & 1 Bur Tray
- 438 Accessory Kit For 140, 150R, 2014 Includes: 1 Mesh Basket, 1 Positioning Cover, 1-600ml Beakers Complete & 1 Bur Tray
- 440 Accessory Kit For 140, 150R & 2014, Includes 1 Beaker Stand, 1 Positioning Cover, 1 Mesh Basket, 1 Auxiliary Pan, 1 Bur Tray & 4-600ml Beakers Complete
- 441 Accessory Kit For 210, Includes: 1 Beaker Stand, 1 Positioning Cover, 1 Mesh Basket, 1 Auxiliary Pan, 1 Bur Tray & 4-600ml Beakers Complete
- 446 Accessory Kit For 280, Includes: 1 Solid Side Basket, 1 Positioning Cover, 4-600ml Beakers Complete, 1 Bur Box & 1 Bur Tray
- 454 Accessory Kit For 140, 150R, 2014 Full Size Basket
- 535 Accessory Kit For 310, 310R, 1/2 Size Basket & Cover
- 659 Accessory Kit For 200, 3/4 Size Basket
- 735 Accessory Kit For PC-3, Includes: 2-100ml Beakers Complete & 1-100ml Positioning Cover



PRO ADVANTAGE® GENERAL PURPOSE ULTRASONIC TABLETS

Easily removes common soils such as blood, tissue, plaster, pumice, buffing compounds from medical and dental instruments. Fully water soluble; no residue left on instruments. One tablet makes one gallon of solution.

P817515 General Purpose Ultrasonic Tablets, 32/bx



L&R ULTRADOSE® GENERAL PURPOSE CLEANER POWDER

Cleans instruments, burs, general equipment, orthodontic appliances, gold and porcelain. Effectively removes blood, tissue, debris, buffing compounds, rouge, tripoli and oxides. One packet makes one gallon of ultrasonic cleaning solution. Sold in case lot of 6 boxes.

UD030 General Purpose Cleaner Powder, 24/bx, 6 bx/cs

L&R ULTRADOSE® GERMICIDAL ULTRASONIC CLEANER CONCENTRATE

A hospital grade cleaner and disinfectant concentrate solution with a unique detergent/tri-phenolic structure. Cleans inanimate, non-porous surfaces of instruments and appliances as both a pre-soak and an ultrasonic cleaning solution. Disinfects the ultrasonic bath, eliminating residual micro-organisms.

UD036 16oz. Bottle Germicidal Ultrasonic Cleaning Solution, 6 pints/cs

L&R ULTRADOSE® ULTRASONIC CLEANING SOLUTION

An excellent cleaner of instruments, burs, orthodontic appliances, gold, porcelain and general equipment. Removes blood, organic debris, buffing compounds, soils, oxides, rouges and tripoli.

012 Ultrasonic Cleaning Solution, 1oz. Tubes Make One Gallon, 24/bx, 6 bx/cs

L&R 2014 ULTRASONIC CLEANING SYSTEM

Remains one of the most popular professional cleaning systems in use today. Its size and capacity allow the operator the advantage of volume cleaning with minimal space requirements and low noise. This system features a cooling fan, stainless steel tank and cover, automatic tuning, multi-position drain, pilot light and timer as standard. Extremely popular for specialized applications because of its size and 80KHz frequency. It is routinely used for cleaning procedures where laboratory specifications are critical.

760 2014 Ultrasonic Cleaner System w/timer & drain

L&R AUTOCLEAN CLEANER

Provides the ounce of prevention needed to guard against hard water scale and lime deposit accumulation in the chamber that can reduce the efficiency of an autoclave. It helps keep your autoclave operating at peak performance.

239 AutoClean Cleaner, 12 qt/cs

L&R BARRIER MILK CLEANING SOLUTION

For use after ultrasonic cleaning and prior to autoclaving. A one-minute dip provides comprehensive protection from rust and corrosion and keeps hinged instruments and box locks moving smoothly. When used regularly, it helps prevent heat discoloration and corrosion, extending instrument life. For autoclave use only.

076 Barrier Milk Cleaning Solution, Concentrate, 4 gal/cs



CERTOL GOOD VIBRATIONS MULTI-PURPOSE ULTRASONIC CLEANER

Cleans both organic blood debris and inorganic dental materials, enhances ultrasonic cleaning action. Advanced anti-corrosive system protects carbon burs, jointed pliers.

GVUS128 Instrument Detergent, 1 Gallon, 4/cs

GVUS24 1 oz Unit Dose Tubes Ultrasonic Cleaner, Super Concentrated, 24/bx, 6 bx/cs

MIDMARK SONICLEAN® ULTRASONIC CLEANER ACCESSORIES

- 9A290001 Safety Basket For M150
- 9A291001 Half Safety Basket For M150
- 9A292001 Safety Basket For M250
- 9A293001 Half Safety Basket For M250
- 9A294001 Safety Basket For M550
- 9A295001 Cassette Rack (holds 3 IMS cassettes)

Ultrasonic Cleaning

RITTER ULTRASONIC CLEANING SOLUTION

9A296001	General Purpose Cleaner 32 oz.
9A298001	Enzymatic Cleaner 32 oz.

BURNISHINE ULTRASONIC CLEANER

Neutral pH cleaner quickly and safely cleans surgical instruments. Concentrated, rust inhibiting and free rinsing. Can be used in automatic washers and ultrasonic cleaners.

B-6	5 Gallon Ultrasonic Cleaner
B-7	15 Gallon Ultrasonic Cleaner

L&R E-VAC EVACUATION SYSTEM CLEANER CONCENTRATE

Easy to use non-foaming formula eliminates bacterial breeding debris. Now, cleaning evacuation systems is easy. First, use the E-Vac pump to dispense one ounce of cleaner concentrate into the E-Vac Pak. Add water to make one quart of solution, perfect for a single cleaning. Next, simply place the evacuation line into the E-Vac Pak and aspirate the solution through the system, including the high speed line, saliva ejector and cuspidor. Specially formulated to help dissolve organic debris, rope saliva and blood. In addition, the powerful non-foaming solution cleans away calcium build-up in the lines. Traps, pumps, drains and lines are left minty fresh without manual cleaning. Available in gallons. One gallon contains 128 cleanings.

107	E-Vac Concentrate, 4 gal/cs
17728	E-Vac Pak Dispenser



METREX METRICLEAN® 2 LOW FOAM INSTRUMENT CLEANER & LUBRICANT

A low-foaming, multi-purpose concentrated stainless steel cleaner specially designed for a broader range of water conditions. Formulated to help reduce excessive foaming caused by water conditions. Useful in manual cleaning systems, washer sterilizers, washer decontaminator, ultrasonic cleaners and cart washers. Not only keeps high quality stainless steel instruments performing and looking like new, it also enhances functionality and life of the instruments by lubricating, removing stains and mineral deposits, and reducing corrosion.

10-8100	MetriClean 2, Gallons, 4/cs
10-8115	MetriClean 2, 15 Gallon
10-8130	MetriClean 2, 30 Gallon (special order)
10-8150	MetriClean 2, 5 Gallon

SULTAN PRO-PORTION™ ULTRASONIC SOLUTIONS

21360	General Purpose Cleaner, 1oz packet, 20/bx, 12 bx/cs
21370	Enzymatic Cleaner, 1oz packet, 20/bx, 12 bx/cs
21375	Tartar & Stain Remover, 1oz packet, 20/bx, 12 bx/cs



TUTTNAUER CLEAN & SIMPLE™ ULTRASONIC/ENZYMATIC TABLETS

Two tablets added to warm water makes 1 gallon ultrasonic/enzymatic solution. Eliminates handling heavy containers, mixing and storage of liquid concentrates. Anti-corrosive to protect instruments. Breaks down protein and organic matter. Cleans and deodorizes. Non-toxic, bio-degradable, non-caustic, non-ionic. NOTE: Sold by the box by your NDC warehouse.

CS0064	Ultrasonic/Enzymatic Tablets, 64/bx
CS0144	Ultrasonic/Enzymatic Tablets, 144/bx

CROSSTEX CROSSZYME® ENZYMATIC PRESOAK & ULTRASONIC CLEANER/DETERGENT

A biodegradable, phosphate free, chloride free component to enhance the removal of blood and proteinaceous body fluids. Promotes effective cleaning and easy rinsing over a wide range of concentrations and temperatures.

JEZ	Citrus Scent, 20:1 Concentrate, gal, 4/cs
-----	---

CROSSTEX EFFERZYME® EFFERVESCENT CLEANING TABLETS

A biodegradable, non-chlorine formulation in a convenient tablet form. Contains fast acting protease enzymes. Enhances removal of blood and other soils which may be resistant to chemical detergents.

JET	Spearmint Scent, 2 Tablets per gal, 52 tabs/bx, 6 bx/ctn, 4 ctn/cs
-----	--

CROSSTEX ULTRASONIC CLEANING SOLUTION

Especially formulated for the removal of buffing compounds, pumice, rouge, tripoli, food particles, foreign matter and soils of all types. Safe for use on dentures, burs, bridges, crowns, orthodontic appliances, instruments, reamers, diamonds, aspirator tips and glass slides.

JEZNA	Cleaner, 10:1 Concentrate, gal, 4/cs
-------	--------------------------------------



P704020

P704030

PRO ADVANTAGE® ISOLATION GOWNS

Comfortable, fluid-resistant protection. Full length coverage. Elastic arm cuffs. Waist ties secure in front.

- P704020 Isolation Gown, Regular, Yellow, 10/bg, 5 bg/cs
 P704025 Isolation Gown, X-Large, Yellow, 10/bg, 5 bg/cs
 P704030 Isolation Gown, Regular, Blue, 10/bg, 5 bg/cs

**PRO ADVANTAGE® IMPERVIOUS GOWNS**

Polyethylene coated gowns are impervious to fluids.

- P704010 Impervious Gown Regular, White, 10/bg, 5 bg/cs
 P704015 Impervious Gown, X-Large, White, 10/bg, 5 bg/cs

**AMD-RITMED IMPERVIOUS GOWNS**

- 8022 Regular Impervious Gown, White, 10/bg, 5 bg/cs
 8024 X-Large Impervious Gown, White, 10/bg, 5 bg/cs
 8025 Regular Impervious Gown, Blue Poly Thumb Loop, 15/bg, 5 bg/cs

**AMD-RITMED ISOLATION GOWNS**

- 8009 Regular Isolation Gown, Yellow, 10/bg, 5 bg/cs
 8010 X-Large Isolation Gown, Yellow, 10/bg, 5 bg/cs
 8023 Regular Isolation Gown, Blue, 10/bg, 5 bg/cs
 A69975 3 Layer SMS Fabric, Regular/Large (1 Size), Yellow, 10pk, 10 pk/cs

CROSSTEX IMPERVIOUS BARRIER GOWN

Latex free. Made of a special combination of 100% non-woven spunbonded polypropylene with a polyethylene coating. Non-irritating, odorless and fiberglass free. Long sleeves - elastic cuffs to fit over gloves. Impervious to most liquids and aerosols. Touch-Tab™ Velcro closure neckline and hand-sewn ties at waist. Open back keeps wearer cool. Light blue

- NBG Impervious Gown w/open back, 29.5" x 40", Blue

DUKAL INFECTION CONTROL GOWNS

White with elastic cuffs. PSB/PE.

- 303W Infection Control Gown, Full Back, White, 10/pk, 5 pk/cs



301

303

DUKAL ISOLATION GOWNS

All gowns are made of high-quality spunbonded material and are latex free. Elastic cuffs provide a snug fit under gloves. There are multiple options in color, material, and design to fit all market needs.

- 301 Isolation Gown, Yellow, 10/bg, 5 bg/cs
 301BL Isolation Gown, Blue, 10/bg, 5 bg/cs
 301SP Isolation Gown, Economy, Yellow, 10/bg, 5 bg/cs
 301WH Isolation Gown, White, 10/bg, 5 bg/cs
 303 Isolation Gown, Impervious, Yellow, 10/bg, 5 bg/cs
 303BL Isolation Gown, Impervious, Blue, 10/bg, 5 bg/cs

**GRAHAM PROFESSIONAL FLUID RESISTANT GOWNS**

Made of durable spunbound/poly that is fluid-repellent. Designed with thumbloops and tear-away back opening. 28" x 44"

- 290 Blue Gown, 25/cs

**GRAHAM PROFESSIONAL NONWOVEN ISOLATION GOWN**

Linen-soft nonwoven gown provides comfort modesty and warmth. Front/back opening with elastic cuffs.

241 Sewn Gown, Elastic Cuff, 30" x 42", Yellow, 50/cs

**KIMBERLY-CLARK POLY-COATED GOWNS**

Constructed with a fluid impermeable polyethylene layer on top of a single layer of spunbond, don easily, and offer a high level of fluid protection.

69410 Universal Poly-Coated Gown, Blue, 10/pk, 10 pk/cs
 69411 X-Large Poly-Coated Gown, Blue, 10/pk, 10 pk/cs
 69420 Universal Poly-Coated Gown, Yellow, 10/pk, 10 pk/cs
 69421 X-Large Poly-Coated Gown, Yellow, 10/pk, 10 pk/cs

**KIMBERLY-CLARK PROCEDURE GOWNS**

Protective, fluid-resistant 3-layer fabric. Potential for light to moderate fluid contact. Blue with knit cuffs, full back, and VELCRO® neck closure.

69025 Universal Procedure Gown, 60/cs
 69028 X-Large Procedure Gown, 60/cs

**KIMBERLY-CLARK SPUNCARE™ COVER GOWN**

Non-sterile. Elastic cuffs. Lightweight 3-layer fabric. Exposure anticipated: potential for minimal fluid contact and contact isolation. Universal size.

69975 Cover Gown, Yellow, 100/cs

**KIMBERLY-CLARK IMPERVIOUS COMFORT GOWN**

Non-sterile. Film laminate. Exposure anticipated: potential for soaking for heavy fluid contact in front.

69600 Impervious Gown w/knit cuffs, Blue, Open Back, Universal, 100/cs
 69601 Impervious Gown w/knit cuffs, Blue, Open Back, XX-Large, 100/cs
 69603 Impervious Gown w/thumbhooks, Blue, Open Back, XX-Large, 100/cs

**KIMBERLY-CLARK IMPERVIOUS GOWN**

Non-sterile. Universal size. Plastic film. Perforated open back with thumb hooks. Exposure anticipated: potential for soaking and heavy fluid contact in front. Dispenser box.

69490 Impervious Gown, Blue, Universal, 15/bx, 5 bx/cs

**KIMBERLY-CLARK IMPERVIOUS OPEN BACK GOWN**

Non-sterile. Knit cuffs. Protective 3-layer fabric with polyethylene coating. Exposure anticipated: potential for heavy fluid contact in front.

69455 Impervious Gown w/knit cuffs, Blue, Open Back, Large, 60/cs



69124



69127

KIMBERLY-CLARK VALUESELECT™ COVER GOWNS

One-layer spunbond fabric. Tie neck closure. Elastic cuff. Tie waist.

69124	Yellow Cover Gown, Universal Size, 100/cs
69125	Yellow Cover Gown, X-Large, 100/cs
69127	Blue Cover Gown, Universal Size, 100/cs
69129	Yellow Cover Gown, X-Large, 100/cs

KIMBERLY-CLARK KC100 ISOLATION GOWNS

Designed for lower-fluid, shorter procedures. Large and x-large sizes. Set-in sleeves, hook-and-loop closures.

54100	Gown, Isolation, Yellow, Large, 100/cs
54101	Gown, Isolation, Yellow, X-Large, 100/cs
54110	Gown, Isolation, Blue, Large, 100/cs
54111	Gown, Isolation, Blue, X-Large, 100/cs

KIMBERLY-CLARK KC300 ISOLATION GOWNS

For longer, more invasive, fluid-intensive procedures. Includes top-performing ULTRA and MicroCool gowns. Optimum balance of comfort and fluid-, flame- and lint-resistance. Widest choice of configurations, sizes, and lengths. Optional Secure-Fit Technology to reduce glove slip-down.

54300	Gown, Isolation, Yellow, Large, 100/cs
54301	Gown, Isolation, Yellow, X-Large, 100/cs
54310	Gown, Isolation, Blue, Large, 100/cs
54311	Gown, Isolation, Blue, X-Large, 100/cs

**BUSSE ISOLATION GOWNS**

Yellow, fluid resistant, spunbonded polypropylene, with elastic cuffs and attached neck and waist ties (unless noted) to assure snug fit. Full back. Latex free.

202	Non-Sterile ISO Gown, 50/cs
211	X-Large ISO Gown, Non-Sterile, Tape Back Closure, 10/bg, 5 bg/cs

BUSSE SMS TRI-LAYERED GOWN

Latex free.

242	Isolation Gown w/tape back & neck closure, Yellow, Universal Size, 100/cs
-----	---



199



235

BUSSE STAFF PROTECTION GOWNS

White or yellow, poly-coated, spunbonded polypropylene that is repellent to liquids. Long sleeves with elastic or knit cuffs. Full or open back styles. Comply with all OSHA requirements and are unisex and unisize to fit both men and women. Latex free.

199	Open Back Gown, White, 50/cs
200	Full Back Gown, White, 50/cs
203	Full Back Gown, Yellow, w/knit cuffs, 50/cs
205	Full Back Gown, White, w/knit cuffs, 50/cs
235	Embossed Polyethylene Gown w/thumbhook stirrups, Individually Wrapped, Blue, 75/cs

**BUSSE STAFF PROTECTION KIT**

Kit includes: White impervious poly-coated gown, elastic cuffs and ties at neck & waist; fluid-resistant earloop mask with clear plastic wraparound face shield; pair of examination gloves; pair of SUR-STEP™ non-skid shoe covers; 24" blue spunbonded cap; red waste bag with tie. Latex free.

198	Protection Kit w/full back gown, 20/cs
-----	--

TIDI P2® DISPOSABLE GOWNS

Provides comfort and embossed polyethylene protection. One-piece torso/sleeve design reduces the number of vulnerable seam areas. The open back panel offer cool comfort, and the yoke-style eliminates cumbersome ties for easy donning and removal. Proven synthetic blood resistance - passes ASTM F1670 standard test method for resistance of materials used in protective clothing to penetration by synthetic blood. Proven bloodborne pathogen resistance - passes ASTM F1671 standard test method for resistance of materials used in protective clothing to penetration by bloodborne pathogens using phi-X174 bacteriophage penetrations as a test system (viral penetration). Compact dispenser box uses 75% less space than conventional isolation gowns. Universal size.

8576	Gown, Patient, Embossed, Polyethylene, 15/bx, 5 bx/cs
------	---

**ALPHA PROTECH GENPRO™ GOWNS**

Elastic cuffs. Banded ties at neck and waist.

GN-13124-3	Cover Gown, Yellow, Universal Size, 50/cs
GN-13124-4	Cover Gown, Yellow, X-Large, 50/cs

**DYNAREX ISOLATION/BARRIER GOWNS**

Disposable. Universal size. Full length with ties.

- 2141 Fluid Resistant Isolation Gown, Yellow, Full Back, 50/cs
2145 Poly-Coated Barrier Gown, White, 50/cs

MEDICOM ISOLATION GOWNS

Added protection against cross-contamination. Comfortable fit with elastic cuffs, waist and neckties. Single-use and disposable. Fluid repellent.

- 8015 Gown, Isolation, Pink, 10/pk, 5 pk/cs

**DUKAL COVERALLS**

Full size, heavyweight spunbonded material is fluid resistant and flame retardant. Elastic wrists and ankles.

- 382XL Coveralls, White, Size XL, Disposable, 5/bg, 5 bg/cs
382XXL Coveralls, White, Size XXL, Disposable, 5/bg, 5 bg/cs
382XXXL Coveralls, White, Size XXXL, Disposable, 5/bg, 5 bg/cs
392XL Coveralls, Blue, Size XL, Disposable, 5/bg, 5 bg/cs

**KIMBERLY-CLARK PROTECTIVE COVERALL**

Protective 3-layer fabric. Exposure anticipated: potential for light fluid contact.

- 75641 Protective Coverall, Blue, X-Large, 24/cs

MOLNLYCKE BARRIER® JUMP SUIT

Fluid repellent. Breathable. Tapered back.

- 1819 Large Jump Suit, 24/cs
1820 X-Large Jump Suit, 24/cs



CV-74032-2



CV-84032-2

ALPHA PROTECH ALPHAGUARD™ COVERALLS

The unique multi-layer construction allows air and perspiration to pass through, keeping you cool and comfortable, while also exhibiting excellent durability, fluid repellent and particle barrier properties. Ideal choice for protection from light to moderate fluid exposure. Features an anti-stat treatment to reduce static charges on the garment surface.

- CV-74032-2 Medium White Coveralls, Elastic Wrist, Ankle & Back, 25/cs
CV-74032-3 Large White Coveralls, Elastic Wrist, Ankle & Back, 25/cs
CV-74032-4 X-Large White Coveralls, Elastic Wrist, Ankle & Back, 25/cs
CV-74032-5 2X-Large White Coveralls, Elastic Wrist, Ankle & Back, 25/cs
CV-74032-6 3X-Large White Coveralls, Elastic Wrist, Ankle & Back, 25/cs
CV-74032-7 4X-Large White Coveralls, Elastic Wrist, Ankle & Back, 25/cs
CV-84032-2 Medium Blue Coveralls, Tapered Wrist & Ankle, Elastic Back, 25/cs
CV-84032-3 Large Blue Coveralls, Tapered Wrist & Ankle, Elastic Back, 25/cs
CV-84032-4 X-Large Blue Coveralls, Tapered Wrist & Ankle, Elastic Back, 25/cs
CV-84032-5 2X-Large Blue Coveralls, Tapered Wrist & Ankle, Elastic Back, 25/cs
CV-84032-6 3X-Large Blue Coveralls, Tapered Wrist & Ankle, Elastic Back, 25/cs
CV-84032-7 4X-Large Blue Coveralls, Tapered Wrist & Ankle, Elastic Back, 25/cs



CV-04032-2



CV-04CB2-1

ALPHA PROTECH MICROBREATH™ COVERALLS

White. Garments are impervious yet breathable. Material allows water vapor from perspiration to pass through it keeping the user cool and comfortable. This material offers a fluid and particulate barrier, limited chemical splash protection, and at the same time protects the work environment from particle contamination.

- CV-04032-2 Medium Coveralls, Elastic Wrist, Ankle & Back, 25/cs
CV-04032-3 Large Coveralls, Elastic Wrist, Ankle & Back, 25/cs
CV-04032-4 X-Large Coveralls, Elastic Wrist, Ankle & Back, 25/cs
CV-04032-5 2X-Large Coveralls, Elastic Wrist, Ankle & Back, 25/cs
CV-04032-6 3X-Large Coveralls, Elastic Wrist, Ankle & Back, 25/cs
CV-04032-7 4X-Large Coveralls, Elastic Wrist, Ankle & Back, 25/cs
CV-04CB2-1 Small Coveralls, Elastic Hood, Wrist, Ankle & Back, AquaTrak Boots, 25/cs
CV-04CB2-2 Medium Coveralls, Elastic Hood, Wrist, Ankle & Back, AquaTrak Boots, 25/cs
CV-04CB2-3 Large Coveralls, Elastic Hood, Wrist, Ankle & Back, AquaTrak Boots, 25/cs
CV-04CB2-4 X-Large Coveralls, Elastic Hood, Wrist, Ankle & Back, AquaTrak Boots, 25/cs
CV-04CB2-5 2X-Large Coveralls, Elastic Hood, Wrist, Ankle & Back, AquaTrak Boots, 25/cs
CV-04CB2-6 3X-Large Coveralls, Elastic Hood, Wrist, Ankle & Back, AquaTrak Boots, 25/cs
CV-04CB2-7 4X-Large Coveralls, Elastic Hood, Wrist, Ankle & Back, AquaTrak Boots, 25/cs



ALPHA PROTECH GENPRO™ COVERALLS

Made of polypropylene fabric with a zipper down the front for easy donning. Design features inset sleeves. Fabric is strong, lightweight, breathable material. Serged seams.

CV-14032-2	Medium White Coveralls, Elastic Wrist, Ankle & Back, 25/cs
CV-14032-3	Large White Coveralls, Elastic Wrist, Ankle & Back, 25/cs
CV-14032-4	X-Large White Coveralls, Elastic Wrist, Ankle & Back, 25/cs
CV-14032-5	2X-Large White Coveralls, Elastic Wrist, Ankle & Back, 25/cs
CV-14032-6	3X-Large White Coveralls, Elastic Wrist, Ankle & Back, 25/cs
CV-14032-7	4X-Large White Coveralls, Elastic Wrist, Ankle & Back, 25/cs



BUSSE COVERALLS

White spunbonded polypropylene with zipper. Latex free.

212	Fluid Resistant Coveralls, Open Sleeve, Large, 25/cs
213	Fluid Resistant Coveralls, Open Sleeve, X-Large, 25/cs
214	Fluid Resistant Coveralls, Elastic Cuffs, Large, 25/cs
215	Fluid Resistant Coveralls, Elastic Cuffs, X-Large, 25/cs
219	Poly-Coated Fluid Repellent Coveralls, Elastic Cuffs, X-Large, 25/cs

BUSSE SMS TRI-LAYERED COVERALLS

Latex free.

245	Large Coveralls w/open cuffs, Blue, 24/cs
246	X-Large Coveralls w/open cuffs, Blue, 24/cs
247	Large Coveralls, Elastic Wrist Cuffs, Open Ankle Cuffs, Back Elastic Gather, White, 24/cs
248	X-Large Coveralls, Elastic Wrist Cuffs, Open Ankle Cuffs, Back Elastic Gather, White, 24/cs



AMD-RITMED LAB COATS

8016	Lab Coat, Small, Blue, 10/bg, 5 bg/cs
8017	Lab Coat, Medium, Blue, 10/bg, 5 bg/cs
8018	Lab Coat, Large, Blue, 10/bg, 5 bg/cs
8019	Lab Coat, X-Large, Blue, 10/bg, 5 bg/cs



AMD-RITMED PREMIUM WHITE LAB COATS

Providing comfortable, premium protection to the entire staff. Front snaps for closure and no pockets to protect against unknown fluid transfer. Latex-Free. Made of Fluid Resistant SMS Material. Full Length for Full Protection. Knitted cuffs and collar for comfort and security.

A8041	Premium Lab Coat, Small, White, 50/cs
A8042	Premium Lab Coat, Medium, White, 50/cs
A8043	Premium Lab Coat, Large, White, 50/cs
A8044	Premium Lab Coat, X-Large, White, 50/cs
A8045	Premium Lab Coat, XX-Large, White, 50/cs
A8046	Premium Lab Coat, XXX-Large, White, 50/cs
A8048	Premium Lab Coat, 4X-Large, White, 50/cs
A8049	Premium Lab Coat, 7X-Large, White, 50/cs



GRAHAM PROFESSIONAL LAB COAT

Full length, long sleeve, white lab coat with full collar and snap closures. Made of soft, heavyweight, spunbound material for greater comfort during extended wear. Non-absorbent. Raglan sleeves with full knit cuffs. Three pockets. White.

254	Small/Medium Lab Coat, 10/cs
255	Large/X-Large Lab Coat, 10/cs
46987	XX-Large Lab Coat, 10/cs

**KIMBERLY-CLARK BASIC LAB COAT**

Protective 3-layer fabric. Exposure anticipated: potential for light fluid contact. Traditional collar. Knit cuffs. Four snaps. Two reinforced pockets. Size/name label.

- 10121 Lab Coat, White, Medium, 25/cs
- 10122 Lab Coat, White, Large, 25/cs
- 10123 Lab Coat, White, X-Large, 25/cs

**KIMBERLY-CLARK BASIC PLUS LAB COAT**

Protective 3-layer fabric. Exposure anticipated: potential for light fluid contact. Knit collar. Knit cuffs. Five snaps. Three reinforced pockets. Neck loop for hanging. Size/name label.

- 10022 Lab Coat, White, Large, 25/cs
- 10023 Lab Coat, White, X-Large, 25/cs
- 10024 Lab Coat, White, XX-Large, 25/cs
- 10031 Lab Coat, Blue, Medium, 25/cs
- 10032 Lab Coat, Blue, Large, 25/cs
- 10033 Lab Coat, Blue, X-Large, 25/cs

**KIMBERLY-CLARK JACKET**

Protective 3-layer fabric. Exposure anticipated: potential for moderate fluid contact. Knit collar and cuffs. Five snaps. Two reinforced pockets. Neck loop for hanging. Size/name label.

- 10067 Professional Jacket, Blue, Medium, 24/cs
- 10076 Professional Jacket, White, Large, 24/cs
- 10078 Professional Jacket, Blue, Large, 24/cs
- 10087 Professional Jacket, Blue, X-Large, 24/cs

**KIMBERLY-CLARK UNIVERSAL PRECAUTIONS LAB COAT**

Protective 3-layer fabric. Exposure anticipated: potential for moderate fluid contact. Traditional collar. Knit cuffs. Six snaps. Three reinforced pockets. Back vent. Neck loop for hanging. Size/name label.

- 10040 Lab Coat, White, Small, 25/cs
- 10041 Lab Coat, White, Medium, 25/cs
- 10042 Lab Coat, White, Large, 25/cs
- 10043 Lab Coat, White, X-Large, 25/cs
- 10044 Lab Coat, White, XX-Large, 10/cs
- 10045 Lab Coat, Blue, Small, 25/cs
- 10046 Lab Coat, Blue, Medium, 25/cs
- 10047 Lab Coat, Blue, Large, 25/cs

**KIMBERLY-CLARK UNIVERSAL PRECAUTIONS LAB JACKET**

Protective 3-layer fabric. Exposure anticipated: potential for moderate fluid contact. Knit collar and cuffs. Five snaps. Three reinforced pockets. Neck loop for hanging. Size/name label.

- 10071 Lab Jacket, White, Medium, 25/cs
- 10072 Lab Jacket, White, Large, 25/cs
- 10073 Lab Jacket, White, X-Large, 25/cs
- 10091 Lab Jacket, Blue, Medium, 25/cs
- 10092 Lab Jacket, Blue, Large, 25/cs
- 10093 Lab Jacket, Blue, X-Large, 25/cs



LC-31632-1



LC-32622-1



LC-32632-1

ALPHA PROTECH ALPHAGUARD™ LAB COATS

Three pockets. Inset sleeve. Snap closure. The unique multi-layer construction allows air and perspiration to pass through, keeping you cool and comfortable, while also exhibiting excellent durability, fluid repellent and particle barrier properties. Ideal choice for protection from light to moderate fluid exposure. Features an anti-stat treatment to reduce static charges on the garment surface.

LC-31632-1	Small Blue Lab Coat, Tapered Collar & Wrist, 30/cs
LC-31632-2	Medium Blue Lab Coat, Tapered Collar, Knit Cuff, 30/cs
LC-31632-3	Large Blue Lab Coat, Tapered Collar, Knit Cuff, 30/cs
LC-31632-4	X-Large Blue Lab Coat, Tapered Collar, Knit Cuff, 30/cs
LC-31632-5	2X-Large Blue Lab Coat, Tapered Collar, Knit Cuff, 30/cs
LC-31632-6	3X-Large Blue Lab Coat, Tapered Collar, Knit Cuff, 30/cs
LC-31632-9	4X-Large Blue Lab Coat, Tapered Collar, Knit Cuff, 30/cs
LC-32622-1	Small White Lab Coat, Tapered Collar, Elastic Wrist, 30/cs
LC-32622-2	Medium White Lab Coat, Tapered Collar, Elastic Wrist, 30/cs
LC-32622-3	Large White Lab Coat, Tapered Collar, Elastic Wrist, 30/cs
LC-32622-4	X-Large White Lab Coat, Tapered Collar, Elastic Wrist, 30/cs
LC-32622-5	2X-Large White Lab Coat, Tapered Collar, Elastic Wrist, 30/cs
LC-32622-6	3X-Large White Lab Coat, Tapered Collar, Elastic Wrist, 30/cs
LC-32622-9	4X-Large White Lab Coat, Tapered Collar, Elastic Wrist, 30/cs
LC-32632-1	Small White Lab Coat, Tapered Collar, Knit Cuff, 30/cs
LC-32632-2	Medium White Lab Coat, Tapered Collar, Knit Cuff, 30/cs
LC-32632-3	Large White Lab Coat, Tapered Collar, Knit Cuff, 30/cs
LC-32632-4	X-Large White Lab Coat, Tapered Collar, Knit Cuff, 30/cs
LC-32632-5	2X-Large White Lab Coat, Tapered Collar, Knit Cuff, 30/cs
LC-32632-6	3X-Large White Lab Coat, Tapered Collar, Knit Cuff, 30/cs
LC-32632-9	4X-Large White Lab Coat, Tapered Collar, Knit Cuff, 30/cs



FK-12122-1



LC-12632-1

ALPHA PROTECH GENPRO™ LAB COATS

Three pockets (except FK series). Snap closure. Lightweight and comfortable, these coats offer first line protection from exposure to light splashing of fluids and will protect personnel's clothes from dirt and grime.

FK-12122-1	Small White Frock Lab Coat, Raglan Sleeve, No Pockets, Elastic Wrist, Snap Collar, 30/cs
FK-12122-2	Medium White Frock Lab Coat, Raglan Sleeve, No Pockets, Elastic Wrist, Snap Collar, 30/cs
FK-12122-3	Large White Frock Lab Coat, Raglan Sleeve, No Pockets, Elastic Wrist, Snap Collar, 30/cs
FK-12122-4	X-Large White Frock Lab Coat, Raglan Sleeve, No Pockets, Elastic Wrist, Snap Collar, 30/cs
FK-12122-5	2X-Large White Frock Lab Coat, Raglan Sleeve, No Pockets, Elastic Wrist, Snap Collar, 30/cs
FK-12122-6	3X-Large White Frock Lab Coat, Raglan Sleeve, No Pockets, Elastic Wrist, Snap Collar, 30/cs
LC-12632-1	Small White Lab Coat, Tapered Collar, Knit Cuff, 30/cs
LC-12632-2	Medium White Lab Coat, Tapered Collar, Knit Cuff, 30/cs
LC-12632-3	Large White Lab Coat, Tapered Collar, Knit Cuff, 30/cs
LC-12632-4	X-Large White Lab Coat, Tapered Collar, Knit Cuff, 30/cs
LC-12632-5	XX-Large White Lab Coat, Tapered Collar, Knit Cuff, 30/cs
LC-12632-6	XXX-Large White Lab Coat, Tapered Collar, Knit Cuff, 30/cs

**ALPHA PROTECH MICROBREATHE™ LAB COATS**

Three pockets. Snap closure. White. Technology now provides garments that are impervious yet breathable. Our proprietary material allows water vapor from perspiration to pass through it keeping the user cool and comfortable. This material offers a fluid and particulate barrier, limited chemical splash protection, and at the same time protects the work environment from particle contamination. Clean and durable, it is the ideal choice for maximum protection of both personnel and clean areas.

LC-52621-1	Small Lab Coat, Tapered Collar, Elastic Wrist, 25/cs
LC-52621-2	Medium Lab Coat, Tapered Collar, Elastic Wrist, 25/cs
LC-52621-3	Large Lab Coat, Tapered Collar, Elastic Wrist, 25/cs
LC-52621-4	X-Large Lab Coat, Tapered Collar, Elastic Wrist, 25/cs
LC-52621-5	2X-Large Lab Coat, Tapered Collar, Elastic Wrist, 25/cs
LC-52621-6	3X-Large Lab Coat, Tapered Collar, Elastic Wrist, 25/cs
LC-52621-9	4X-Large Lab Coat, Tapered Collar, Elastic Wrist, 25/cs

**BUSSE LAB COATS**

Spunbonded polypropylene, fluid resistant with pockets. Knitted collar and cuffs. Latex free.

224	Small/Medium Lab Coat, Blue, 30/cs
226	Small/Medium Lab Coat, White, 30/cs
227	Large/X-Large Lab Coat, Blue, 30/cs
228	Large/X-Large Lab Coat, White, 30/cs

BUSSE SMS TRI-LAYERED LABCOATS

Latex free. Knit cuffs. Six snap closures. Three pockets. Back vent. Neck loop. White.

222	Small/Medium Labcoat, 25/cs
225	Large/X-Large Labcoat, 25/cs
229	XX-Large Labcoat, 25/cs

Masks

**MOLNLYCKE BARRIER® N95 PARTICULATE RESPIRATOR**

NIOSH approved. Meets CDC guidelines for TB exposure. 95% or greater efficiency against 0.3 micron. Fluid repellent.

4270 N-95 Particulate Respirator, 20/bx, 6 bx/cs

3M™ HEALTH CARE N95 PARTICULATE RESPIRATOR & SURGICAL MASK

NIOSH approved as a Type 95 respirator. It meets CDC guidelines for TB exposure control and is designed specifically for use in a health care setting.

1860 Regular Particulate Respirator Mask Cone Molded, 20/bx, 6 bx/cs
 1860S Small Particulate Respirator Mask Cone Molded, 20/bx, 6 bx/cs
 1870 Regular Particulate Respirator Mask, Flat-Fold/3-Panel, 20/bx, 6 bx/cs

3M™ QUALITATIVE FIT TEST APPARATUS

FT-10 Qualitative Fit Test Apparatus, Sweet, Includes: FT-11, FT-12, FT-14, FT-15, & (2) FT-13
 FT-30 Qualitative Fit Test Apparatus, Bitter, Includes: FT-31, FT-32, FT-14, FT-15, & (2) FT-13

3M™ QUALITATIVE FIT TEST APPARATUS ACCESSORIES

Test kits and accessories designed to help your organization meet OSHA fit testing requirements for respirators. Products can be used to check face-to-respirator seal on any particulate respirator or gas/vapor respirator with a particulate prefilter.

FT-11 Sensitivity Solution, Sweet, 55ml Bottle, 6/cs
 FT-12 Fit Test Solution, Sweet, 55ml Bottle, 6/cs
 FT-13 Nebulizer, 3/cs
 FT-14 Test Hood, Reusable, 2/pk, 5 pk/cs
 FT-15 Collar
 FT-31 Sensitivity Solution, Bitter, 55ml Bottle, 6/cs
 FT-32 Fit Test Solution, Bitter, 55ml Bottle, 6/cs

AMD-RITMED SAFE-MASK PRO-SHIELD MASK

Convenient two-in-one protection with combination face mask and eye shield. Increased coverage with full wrap around shield design as required by OSHA guidelines. Comfort fit with fluid repellent and breathable mask attached, that exceeds 99.5% BFE industry standards. Added protection with unique shingle pleat design to prevent fluid pooling. Protection guaranteed with over 99.4% particle filtration at 0.3 microns, exceeding industry standards.

2125 Shield, Teal, 25/bx, 4 bx/cs

**ALPHA PROTECH PFL® N95 PARTICULATE RESPIRATOR**

Positive facial lock masks. Pleated. Malleable aluminum band over nose.

695 Teal Stripe, 8", Double Headband, NIOSH Approved, 35/bx, 6bx/cs
 FIT-TE Qualitative Fit Test Apparatus (saccharin), 1 kit/cs

MOLDEX 1500 N95 HEALTHCARE PARTICULATE RESPIRATOR & SURGICAL MASK

Designed to help provide respiratory protection for the wearer. This product has been tested and certified by NIOSH as an N95 respirator and as having a filter efficiency level of 95% or greater against particulate aerosols free of oil. It is fluid resistant, disposable and may be worn in surgery or throughout the hospital. This product contains no components made from natural rubber latex. Highest AQTM level of fluid resistance on the market (160mm Hg). Bacterial Filtration Efficiency (BFE) >99.9%.

1510 N95 Respirator - Surgical Mask, Disposable, Latex Free, X-Small, Strap Color: Yellow, 20/bx, 8 bx/cs
 1511N95-S N95 Respirator - Surgical Mask, Disposable, Latex Free, Small, Strap Color: White, 20/bx, 8 bx/cs
 1512 N95 Respirator - Surgical Mask, Disposable, Latex Free, Medium, Strap Color: Blue, 20/bx, 8 bx/cs
 1513 N95 Respirator - Surgical Mask, Disposable, Latex Free, Large, Strap Color: Tan, 20/bx, 8 bx/cs
 1517 N95 Respirator - Surgical Mask, Disposable, Latex Free, Low Profile, Strap Color: Green, 20/bx, 8 bx/cs
 2210GN95-XS N95 Particulate Respirator - Surgical Mask, Disposable, Latex Free, X-Small, Strap Color: Yellow, 20/bx, 12 bx/cs
 2211GN95-S N95 Particulate Respirator - Surgical Mask, Disposable, Latex Free, Small, Strap Color: White, 20/bx, 12 bx/cs
 2212GN95-M/L N95 Particulate Respirator - Surgical Mask, Disposable, Latex Free, Medium/Large, Strap Color: Blue, 20/bx, 12 bx/cs
 2217GN95-LP N95 Particulate Respirator - Surgical Mask, Disposable, Latex Free, Low Profile, Strap Color: Green, 20/bx, 12 bx/cs
 3211N95 N95 Particulate Respirator - Surgical Mask, Disposable, Latex Free, Small, Strap Color (Halo): White (Stapled or Sewn Straps), 20/bg, 10 bg/cs
 3212N95 N95 Particulate Respirator - Surgical Mask, Disposable, Latex Free, Medium/Large, Strap Color (Halo): Blue (Stapled or Sewn Straps), 20/bg, 10 bg/cs
 3217N95 N95 Particulate Respirator - Surgical Mask, Disposable, Latex Free, Low Profile (for Low Profile Nose Bridges), Strap Color (Halo): Green (Stapled or Sewn Straps), 20/bg, 10 bg/cs